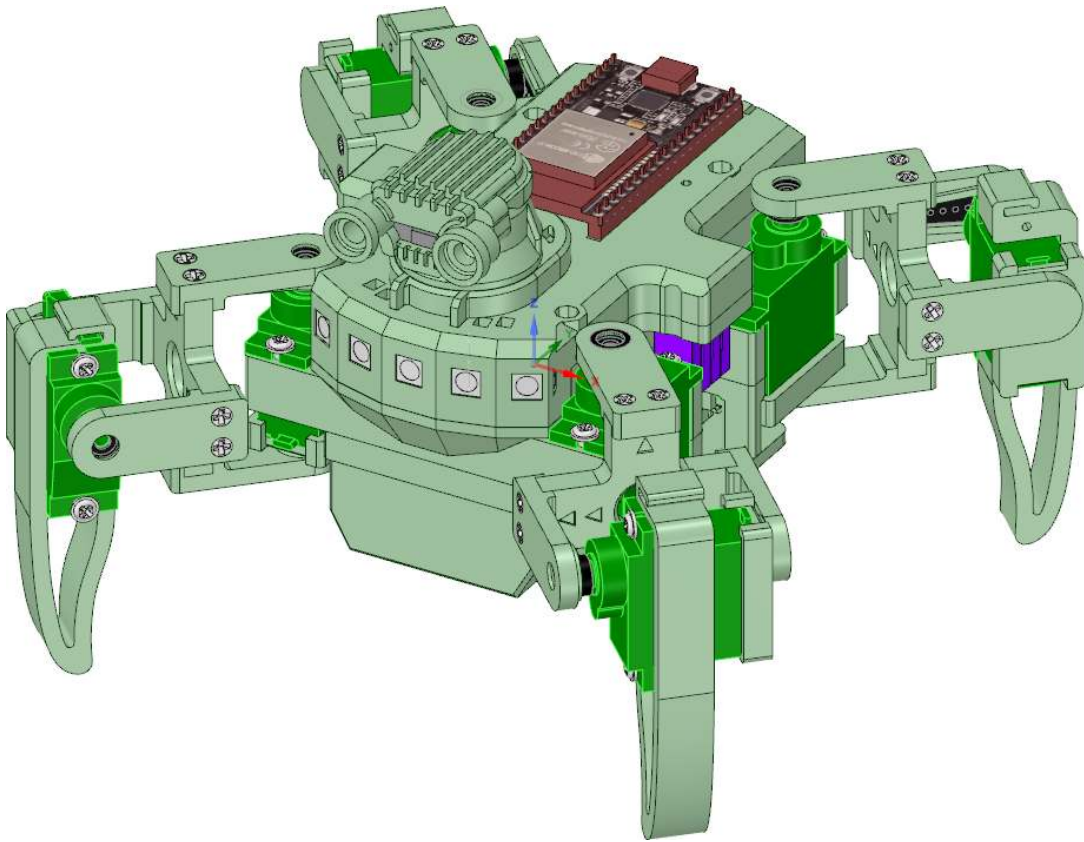


QuadAuto (ESP32)

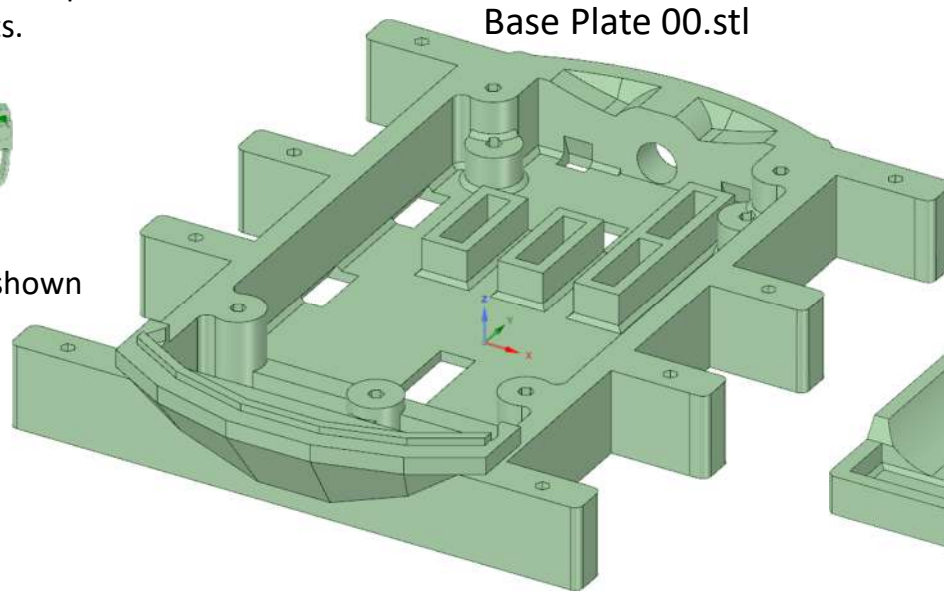
3-D Models



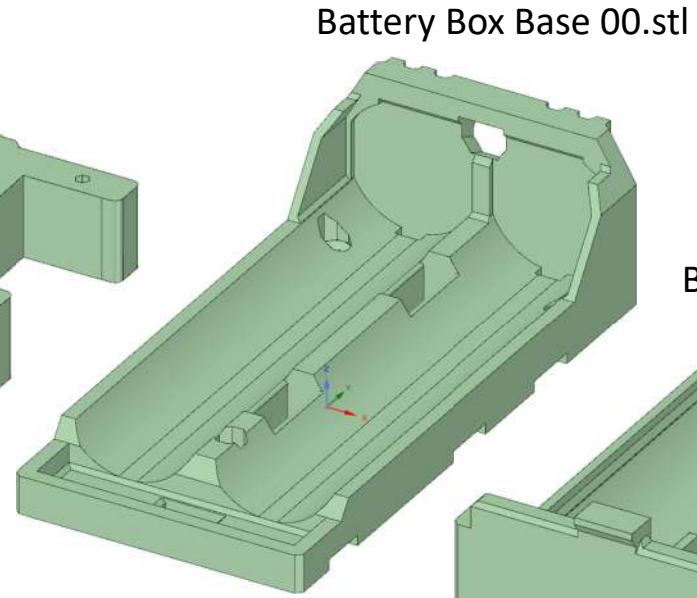
These 3-D views will help you to identify parts.



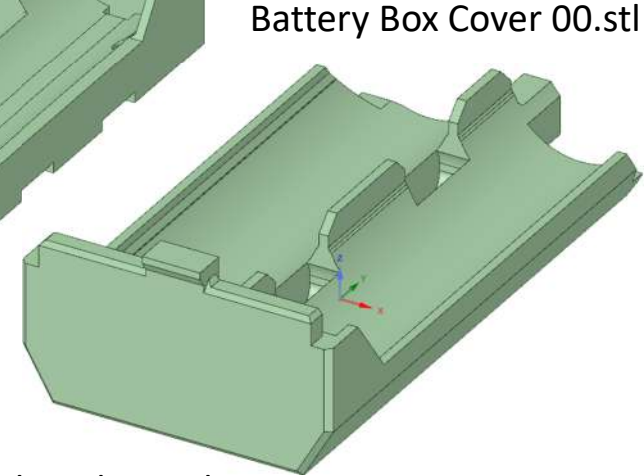
Multiple parts are shown as N x.



Base Plate 00.stl

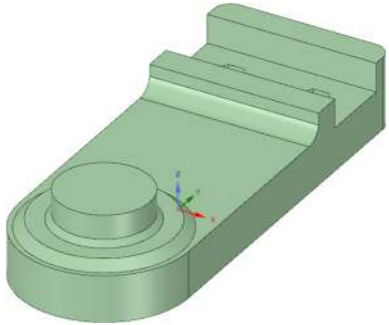


Battery Box Base 00.stl

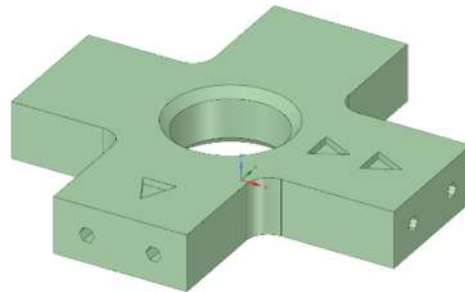


Battery Box Cover 00.stl

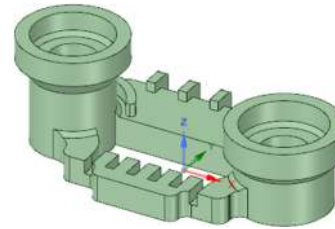
8 x Bearing Plate 00.stl



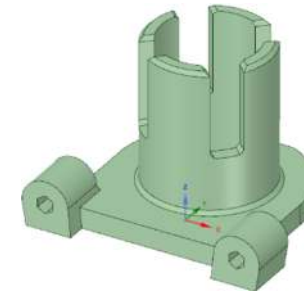
4 x Cross Joint 00.stl



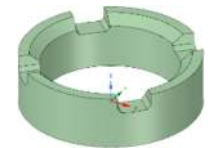
Head Eyelets 00.stl



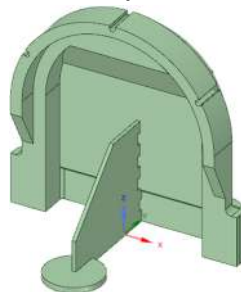
Head Neck 00.stl



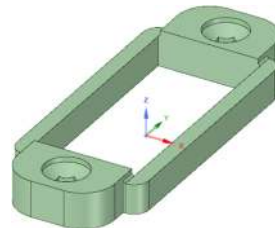
Head Ring 00.stl



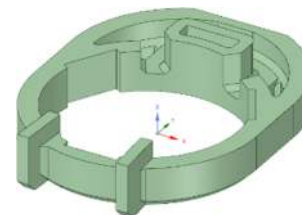
Head Scalp 00.stl



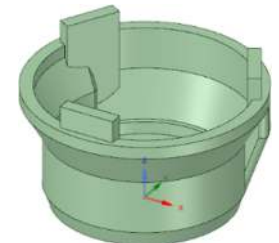
Head Servo Strap 00.stl



Head Shoulder 00.stl



Head Shroud 00.stl

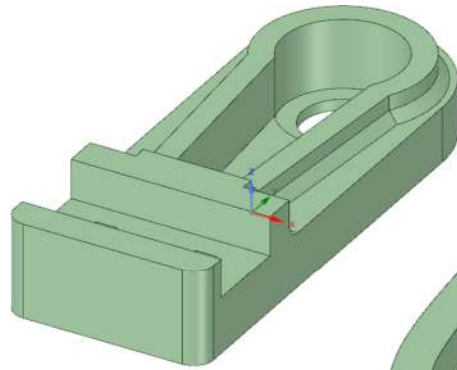


These 3-D views will help you to identify parts.

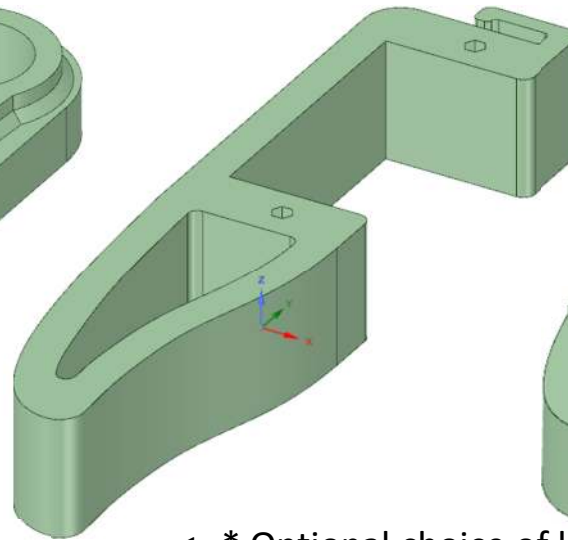


Multiple parts are shown as N x.

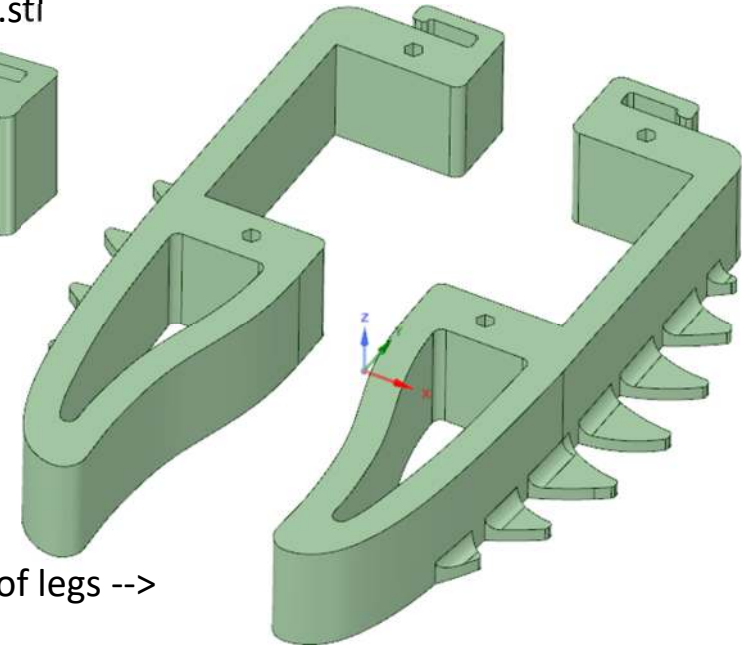
8 x Leaver Plate 00.stl



4 x Leg 00.stl

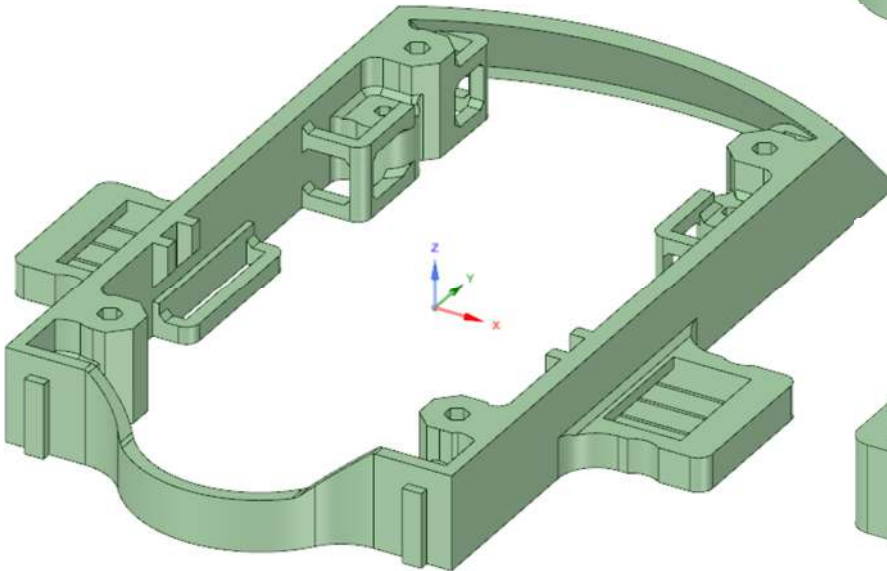


2 x Leg x2 Serrated 00.stl

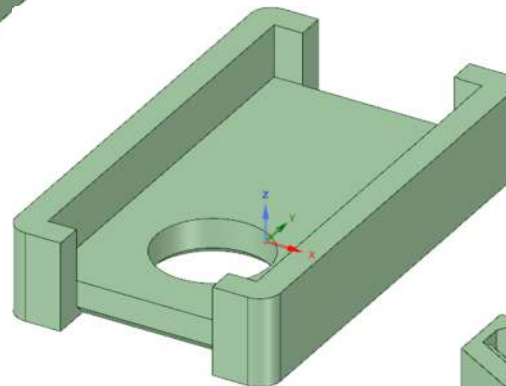


<--* Optional choice of legs -->

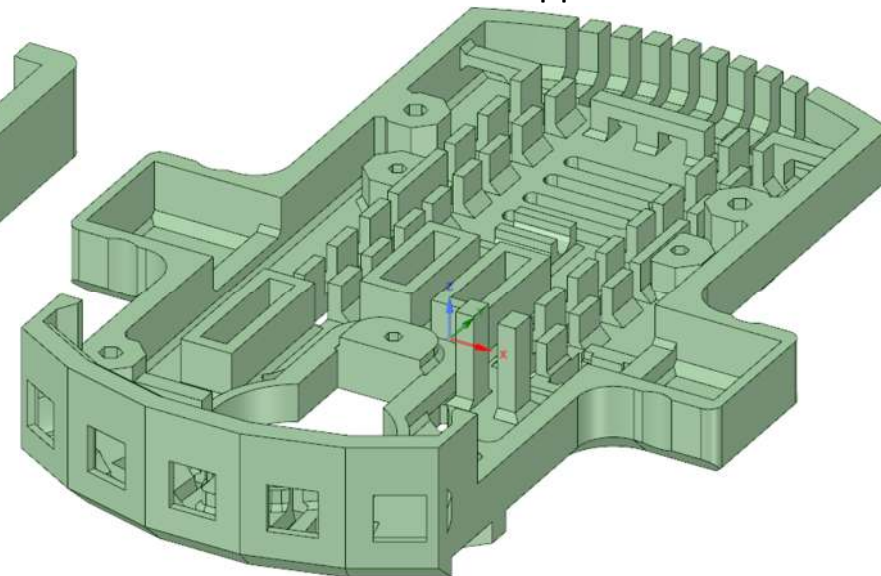
Middle Plate 00.stl



8 x Servo Base Plate 00.stl



Upper Plate 00.stl

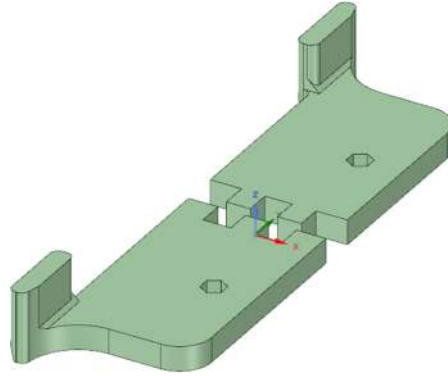


These 3-D views will help you to identify parts.

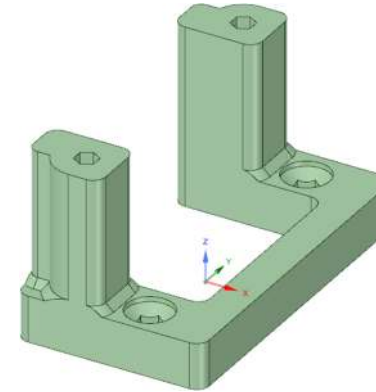


Multiple parts are shown as N x.

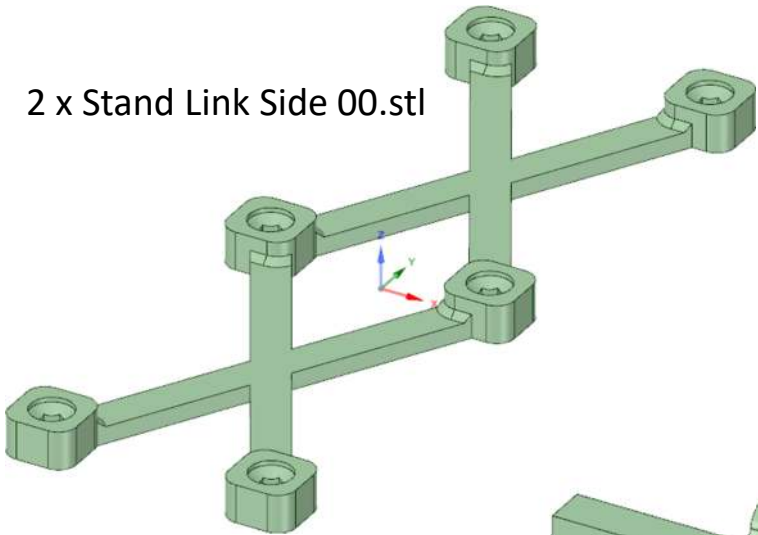
2 x Wire Support Covers 00.stl



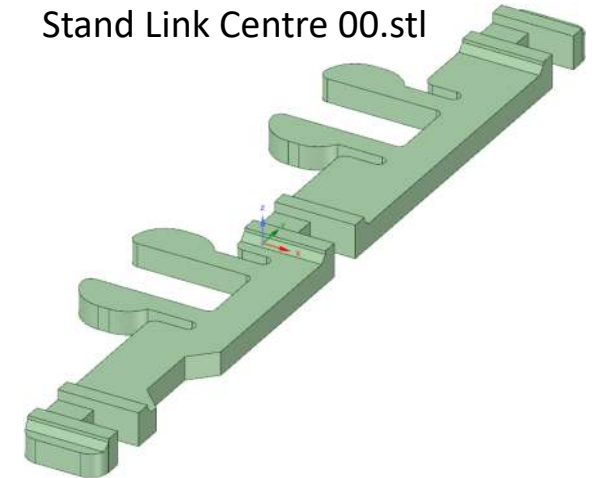
2 x Wire Support Mount 00.stl



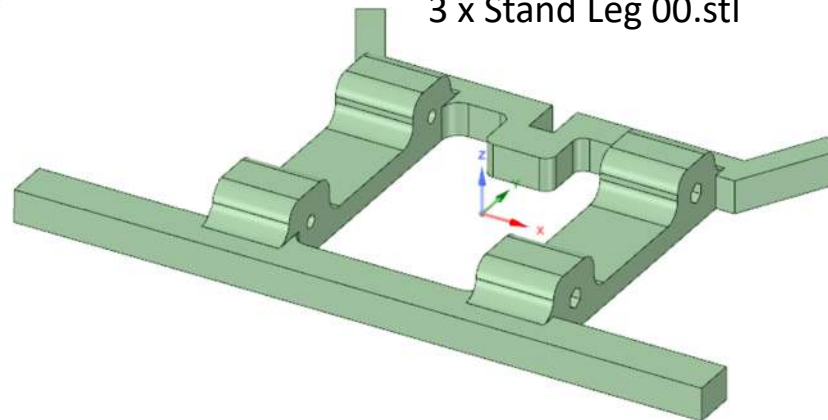
2 x Stand Link Side 00.stl



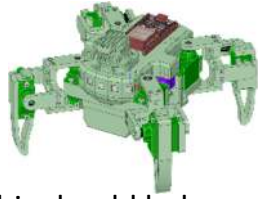
Stand Link Centre 00.stl



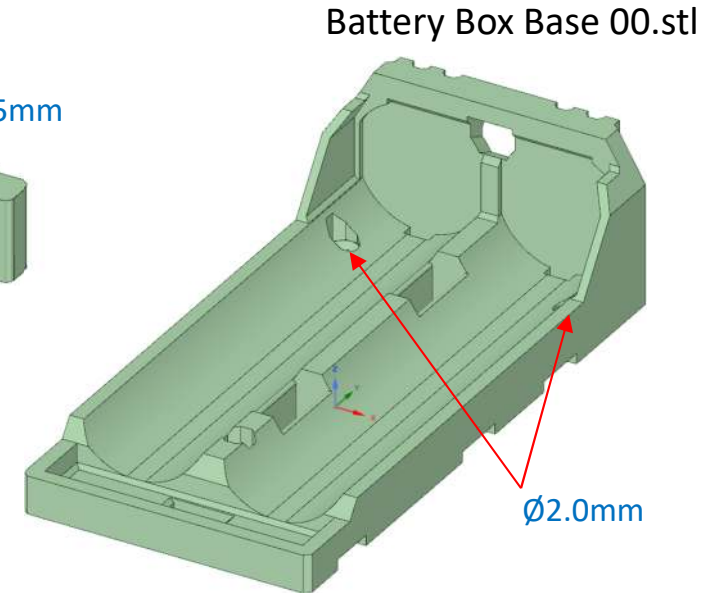
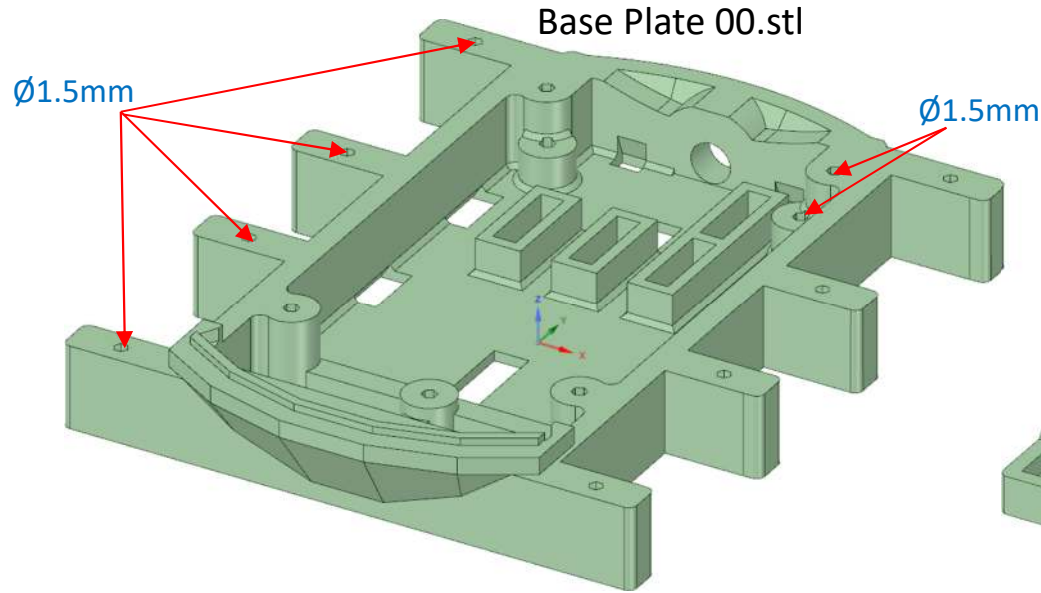
3 x Stand Leg 00.stl



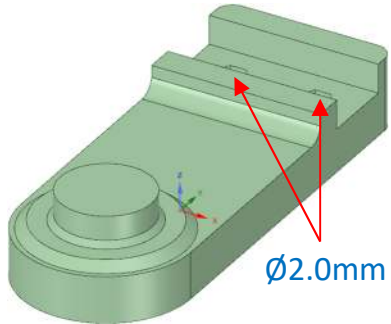
Drill Sizes



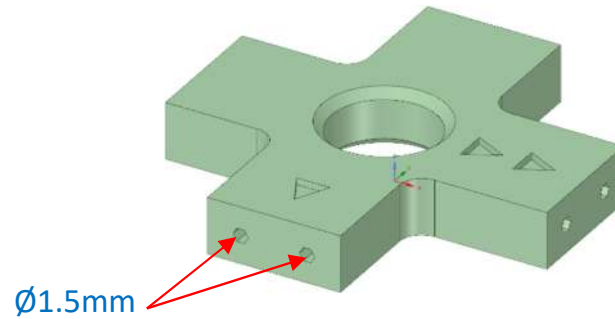
This should help you identify all of the pilot drill and clearance hole sizes.



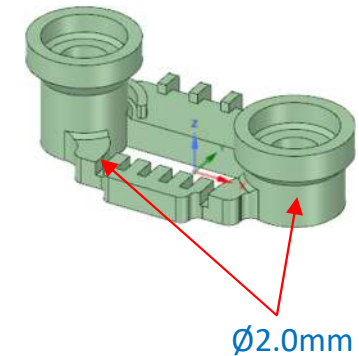
Bearing Plate 00.stl



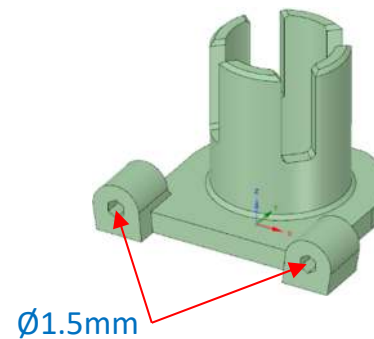
Cross Joint 00.stl



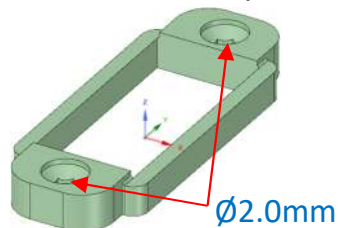
Head Eyelets 00.stl



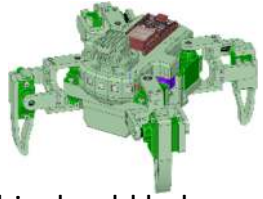
Head Neck 00.stl



Head Servo Strap 00.stl

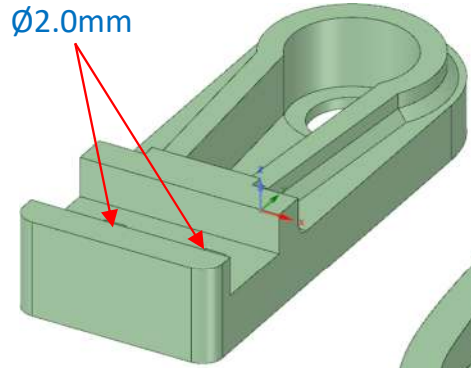


Drill Sizes

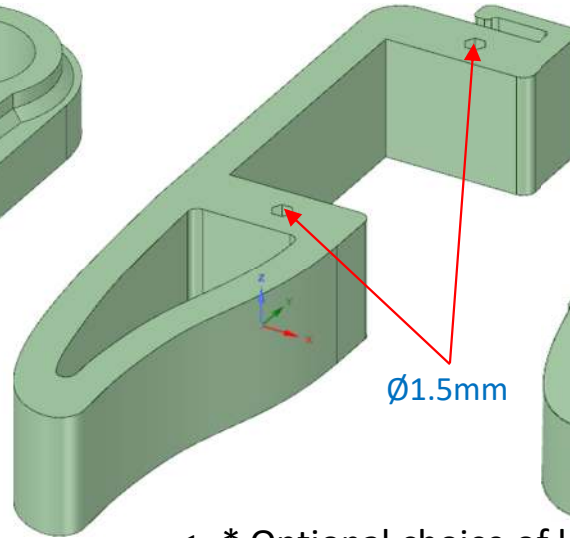


This should help you identify all of the pilot drill and clearance hole sizes.

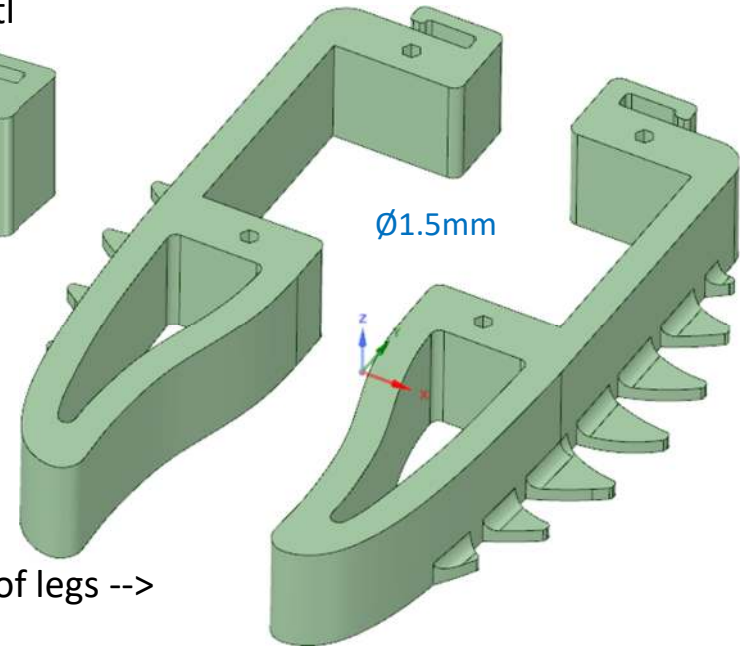
Leaver Plate 00.stl



Leg 00.stl

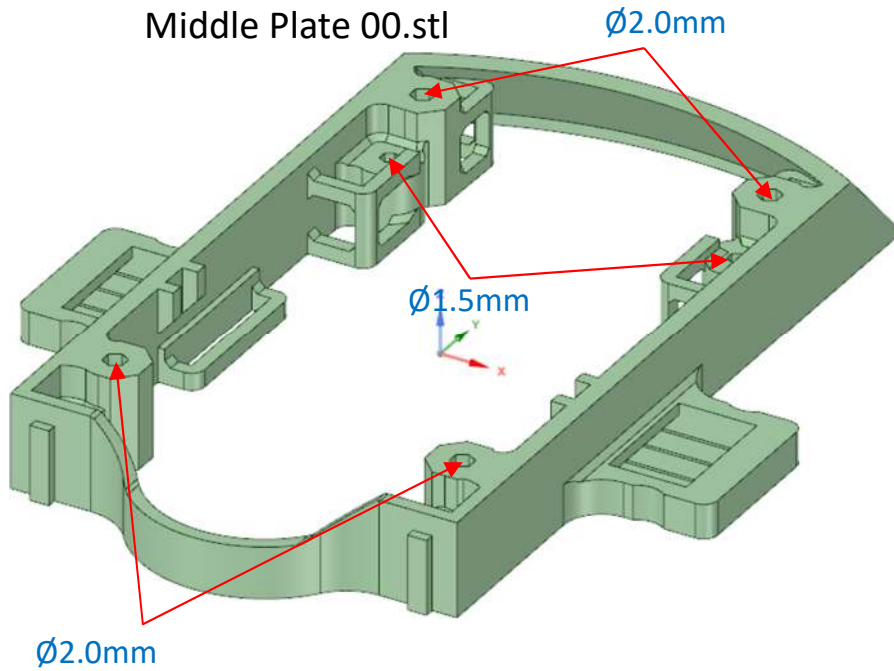


Leg x2 Serrated 00.stl

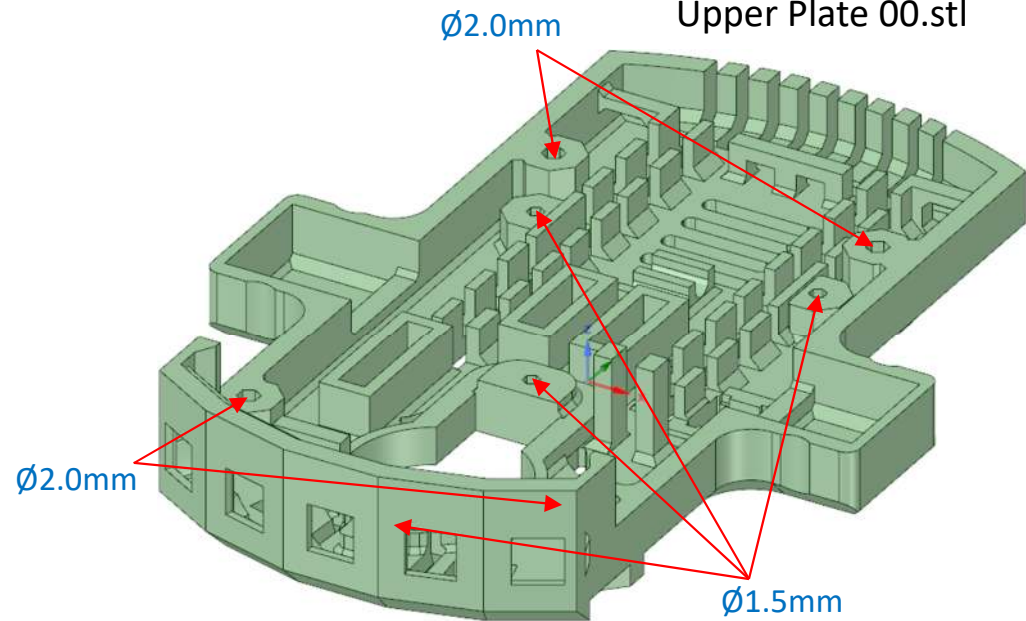


<--* Optional choice of legs -->

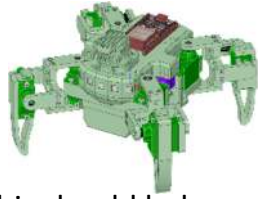
Middle Plate 00.stl



Upper Plate 00.stl

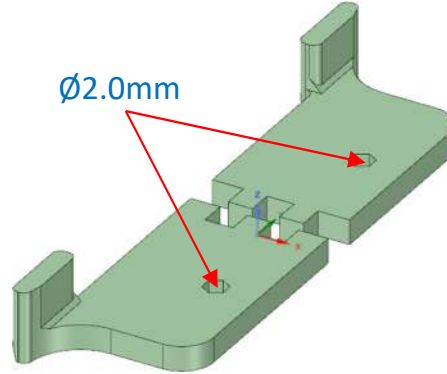


Drill Sizes

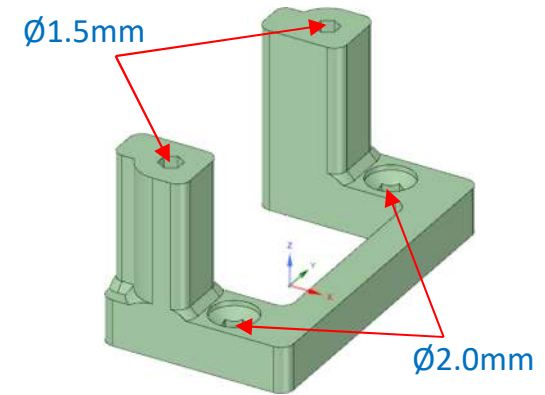


This should help you identify all of the pilot drill and clearance hole sizes.

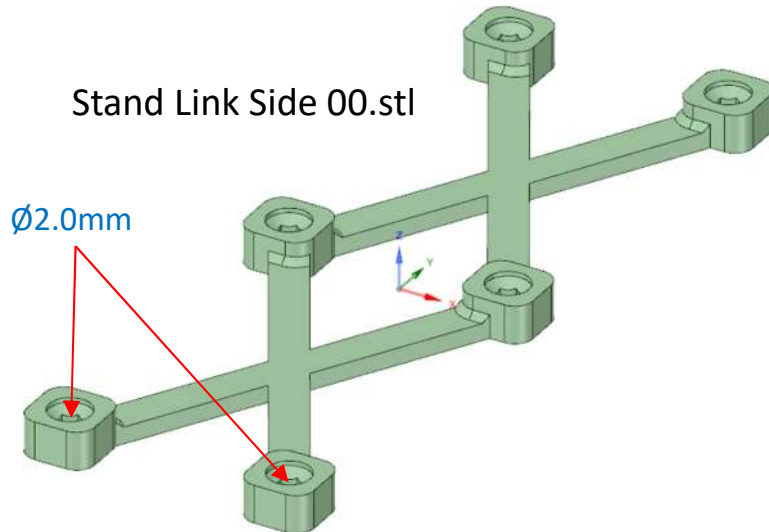
Wire Support Covers 00.stl



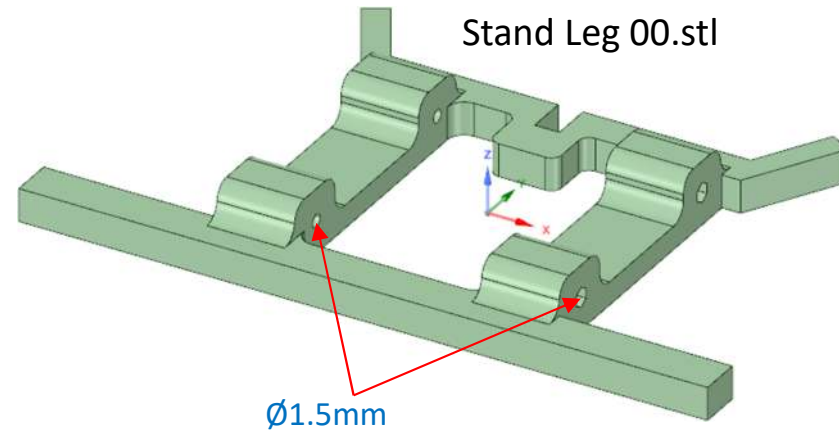
Wire Support Mount 00.stl



Stand Link Side 00.stl

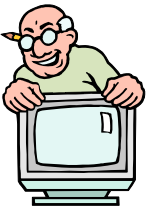


Stand Leg 00.stl

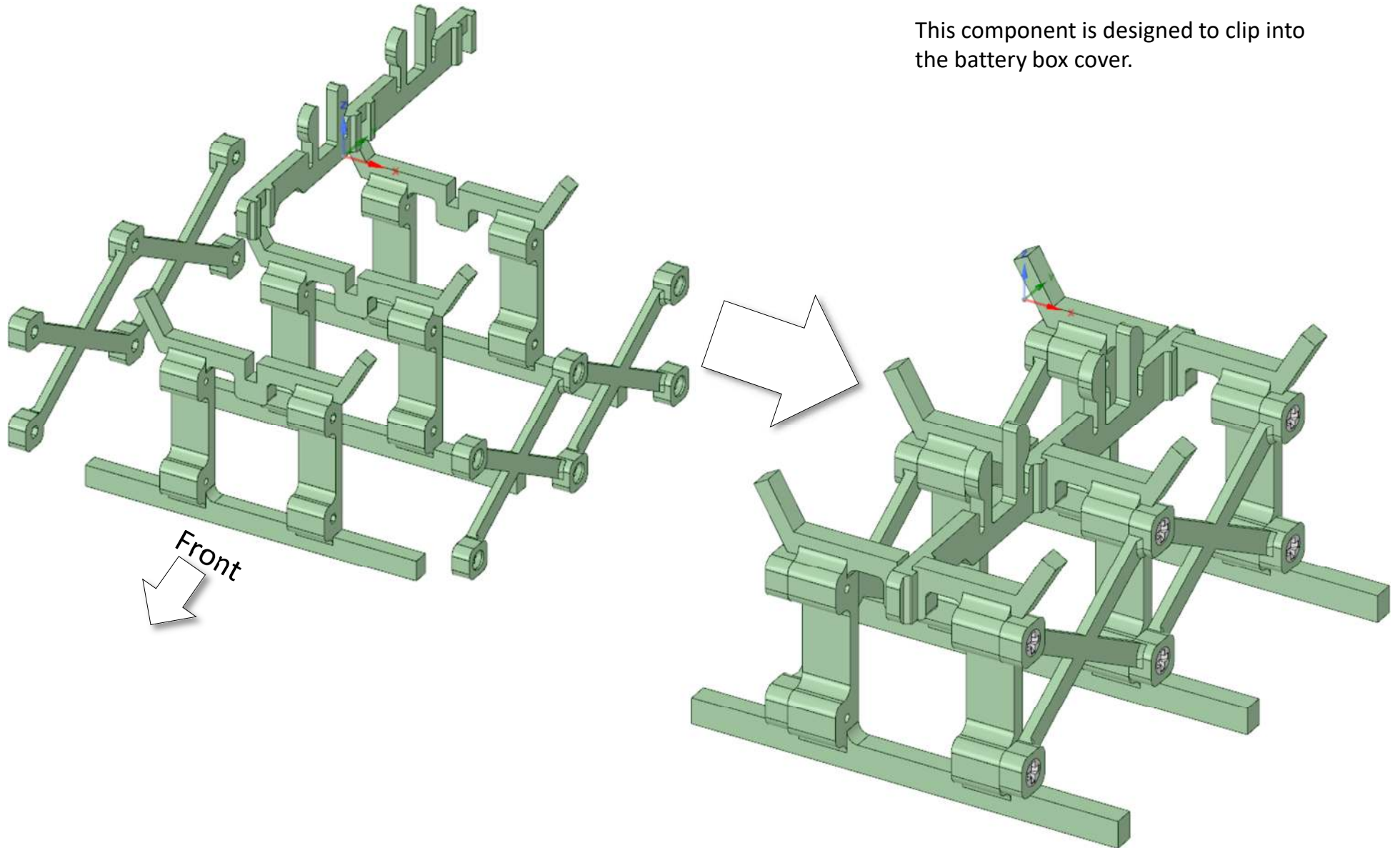


Stand Assembly

The stand is assembled using 2 x 100m dolls house screws, in the manner shown. Note the orientation of the centre link in relation to the legs.



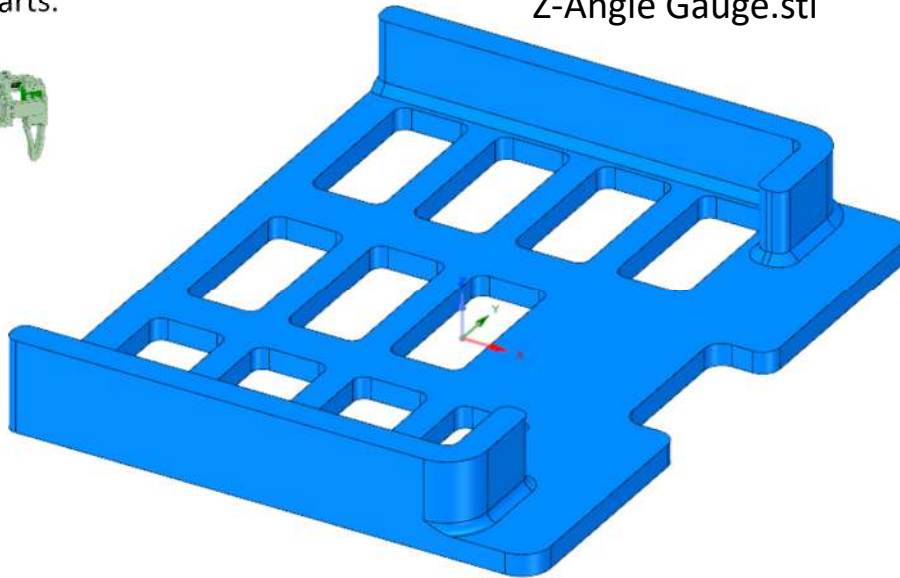
This component is designed to clip into the battery box cover.



These 3-D views will help you to identify parts.



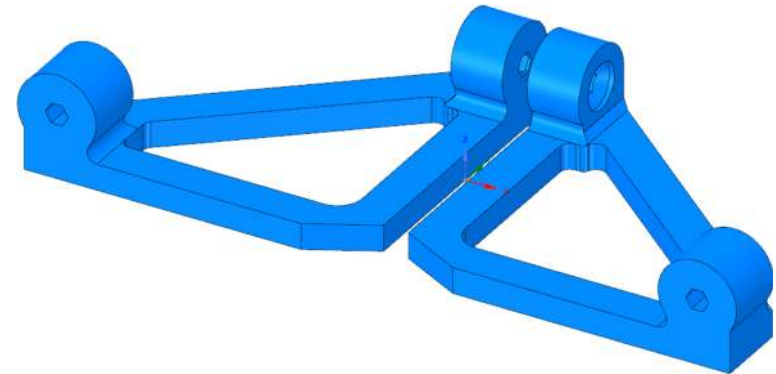
Z-Angle Gauge.stl



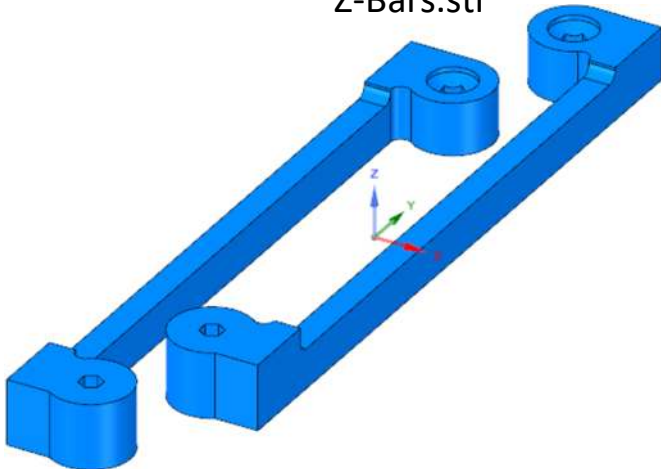
These items are not part of the quadruped robot, but they were designed as useful aids, used in the assembly and calibration tasks.



Middle Plate Brackets 00.stl



Z-Bars.stl



WS2812 Jig.stl

