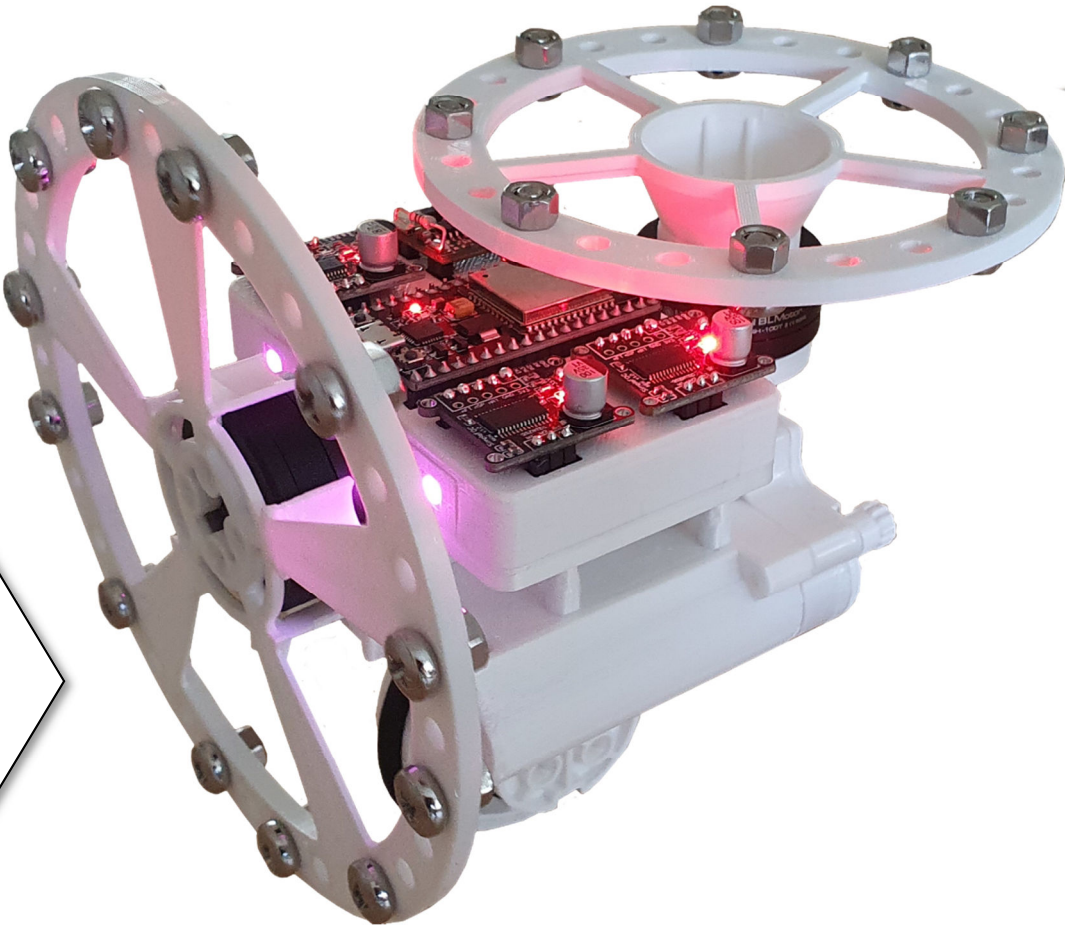
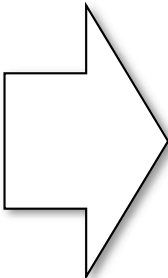
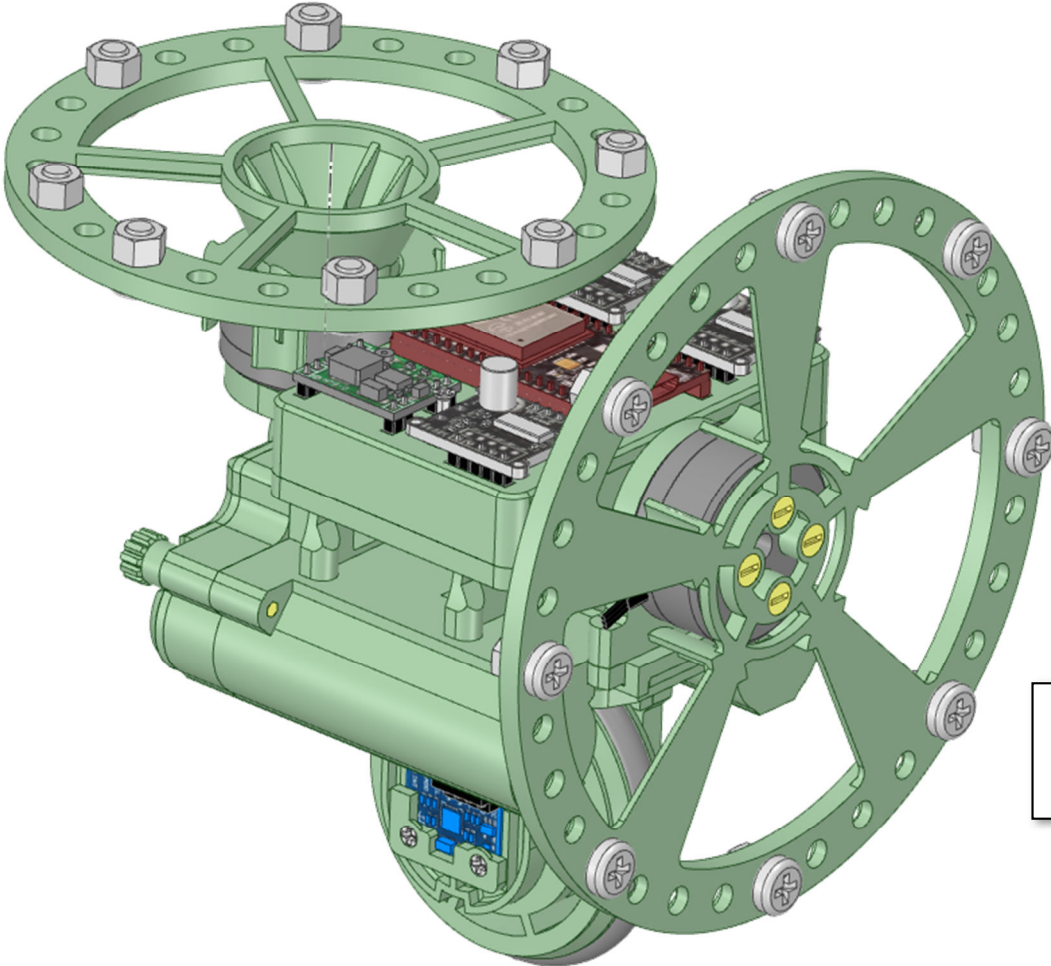
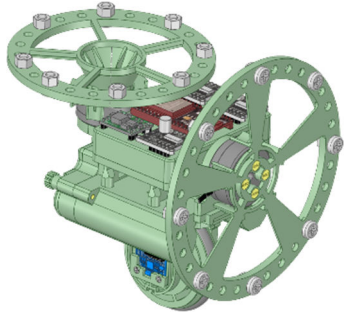


Uni-Bot

3D Parts

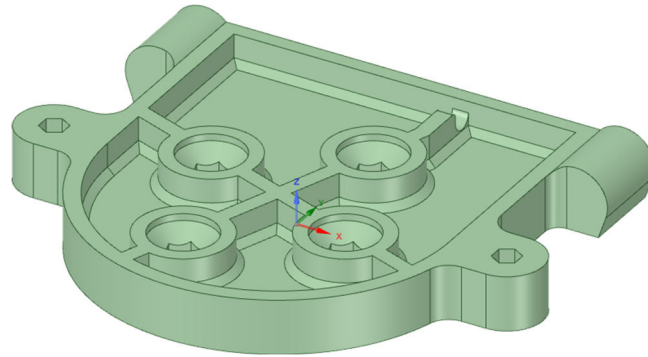


Printed Parts

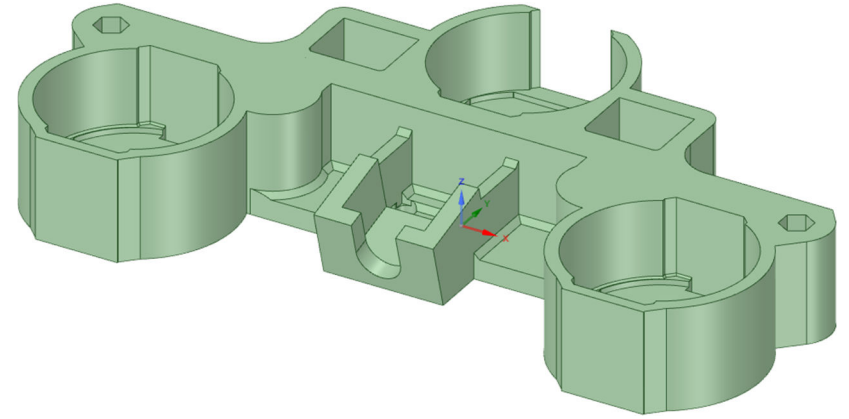


This should help you identify all of the parts needed to build the robot.

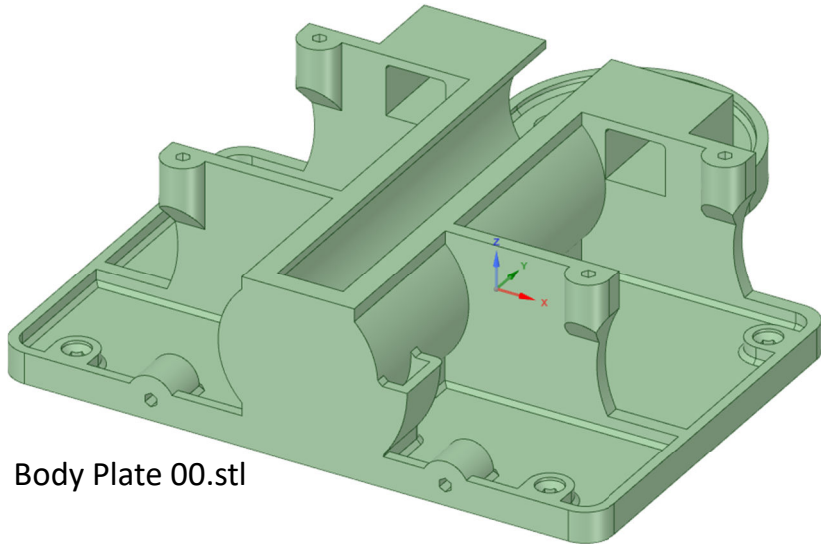
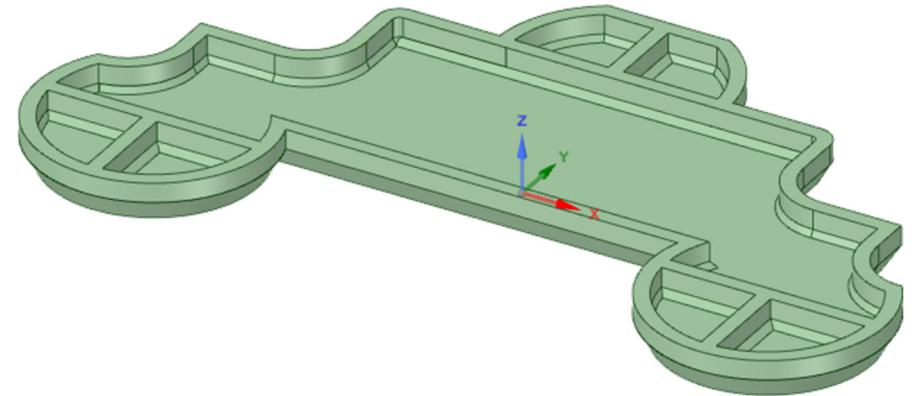
Balance Wheel Mount 00.stl



Battery Cover Body 00.stl

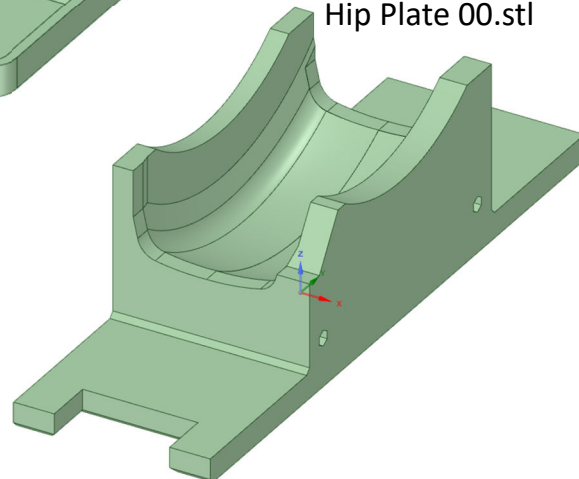


Battery Cover End 00.stl

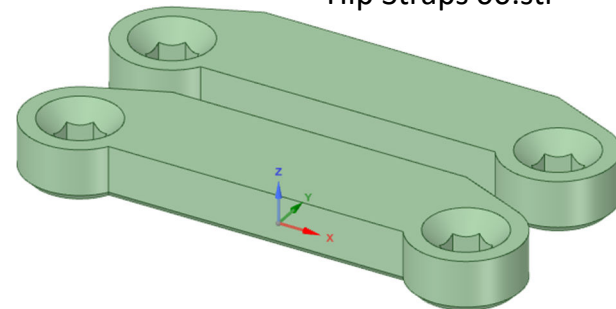


Body Plate 00.stl

Hip Plate 00.stl

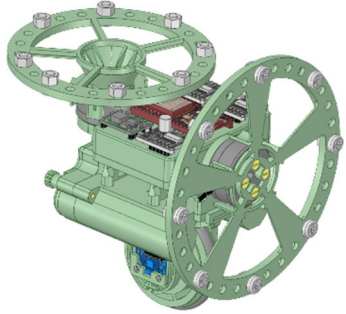


Hip Straps 00.stl

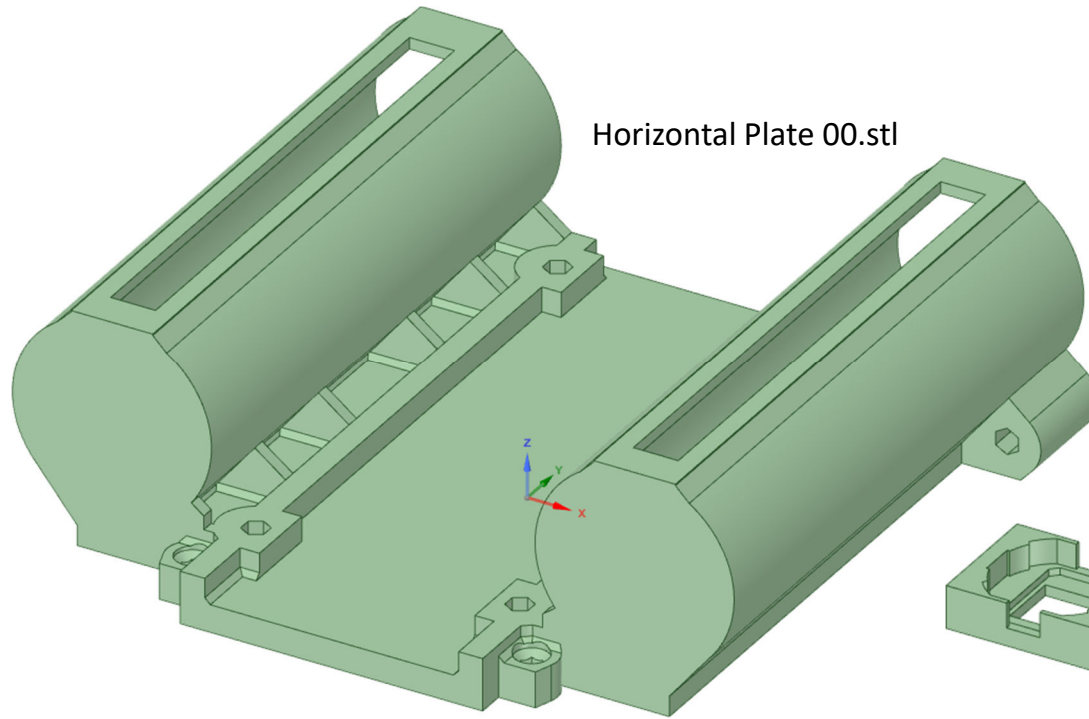


Images are not to scale

Printed Parts

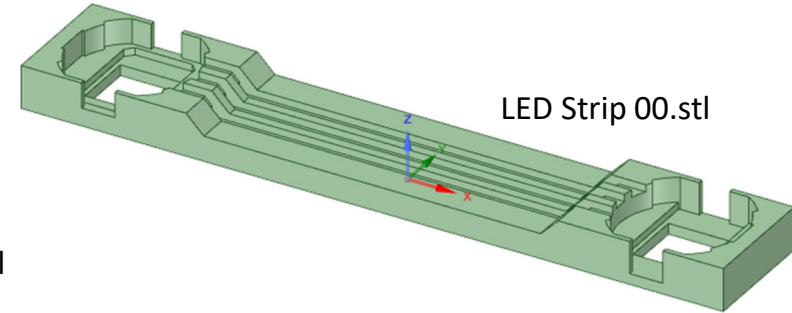
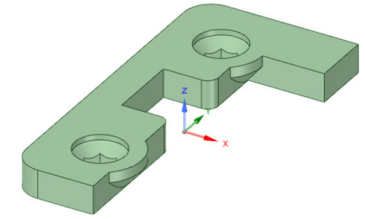


This should help you identify all of the parts needed to build the robot.

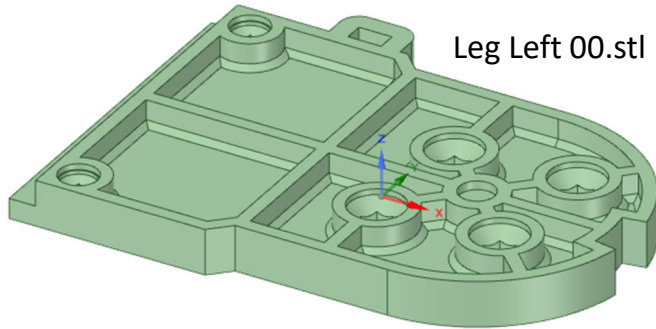


Horizontal Plate 00.stl

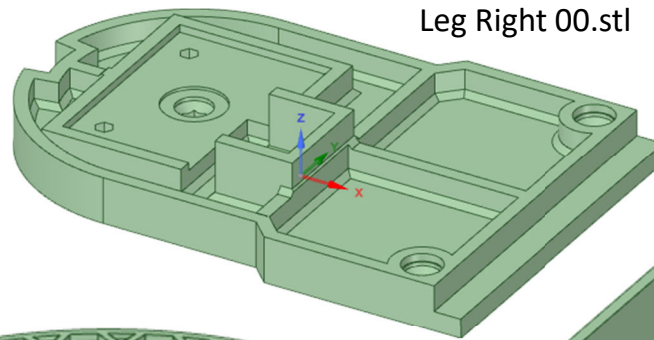
MPU Clamp Plate 00.stl



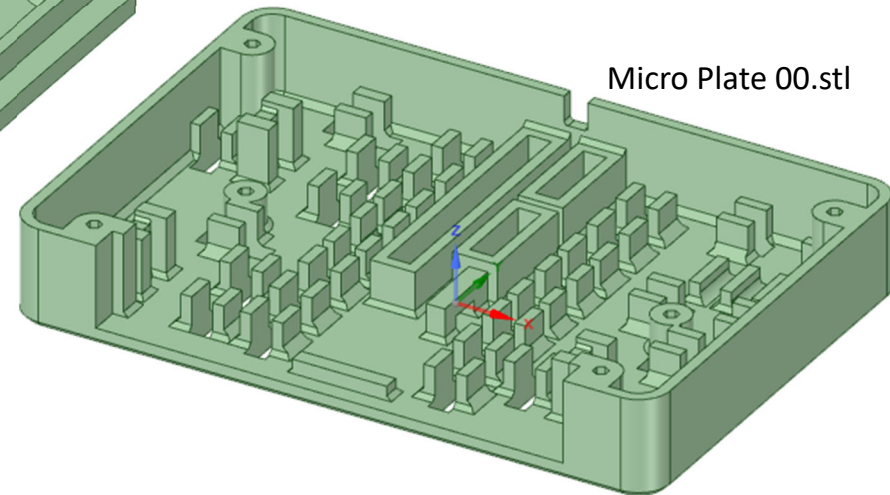
LED Strip 00.stl



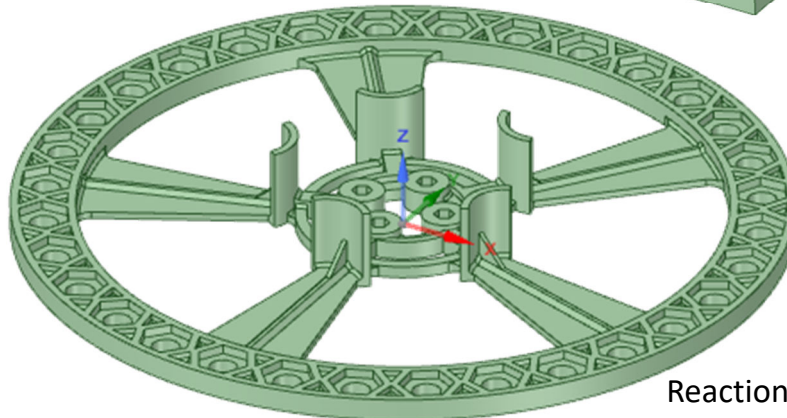
Leg Left 00.stl



Leg Right 00.stl



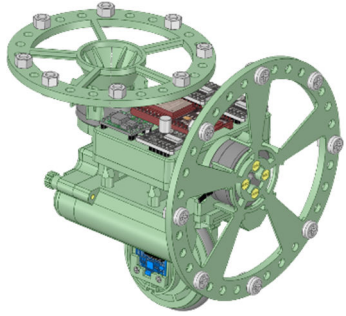
Micro Plate 00.stl



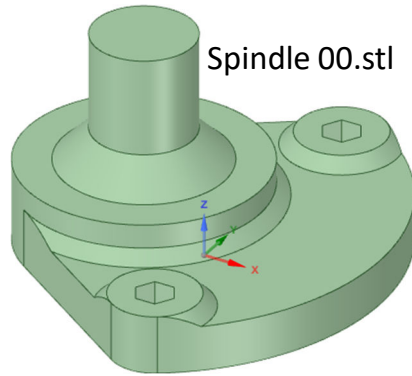
Reaction Wheel 01.stl

Images are not to scale

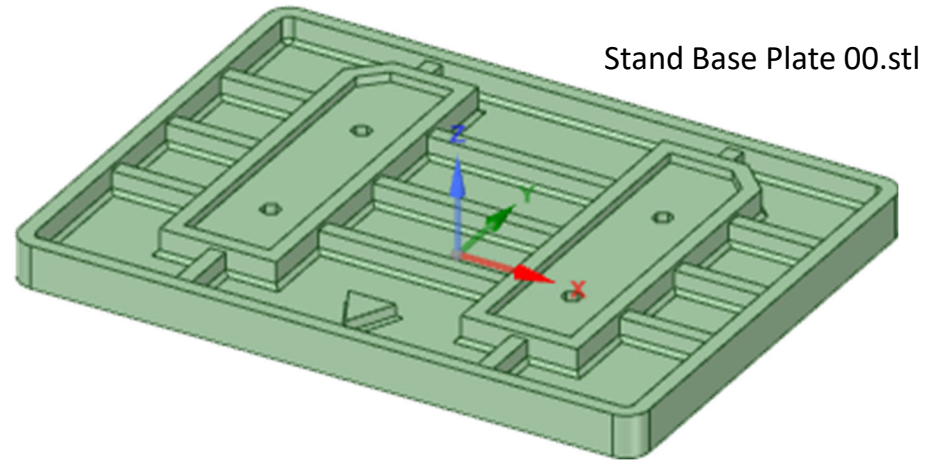
Printed Parts



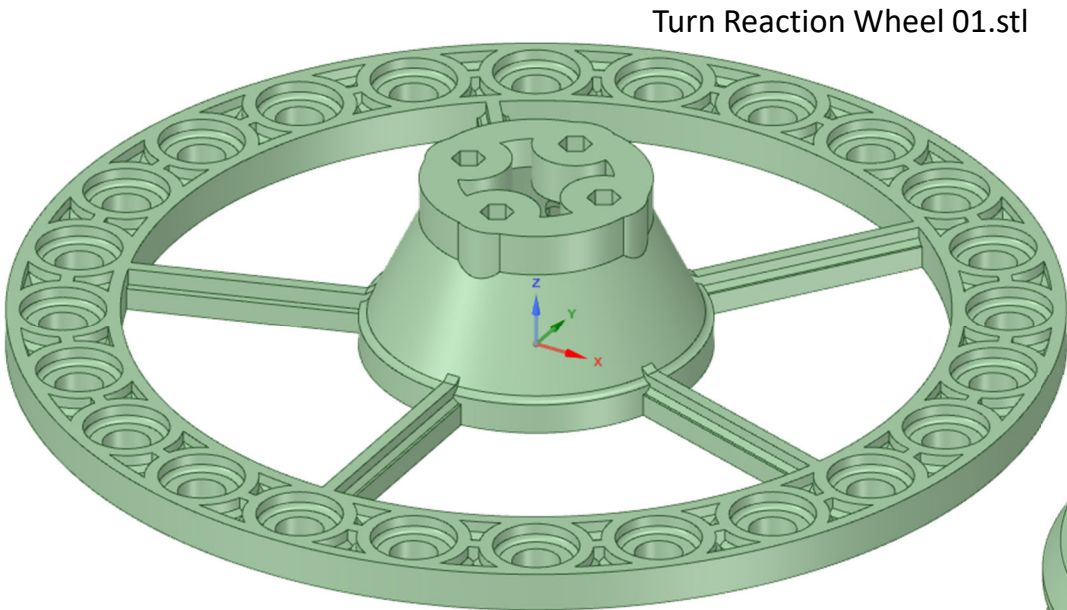
This should help you identify all of the parts needed to build the robot.



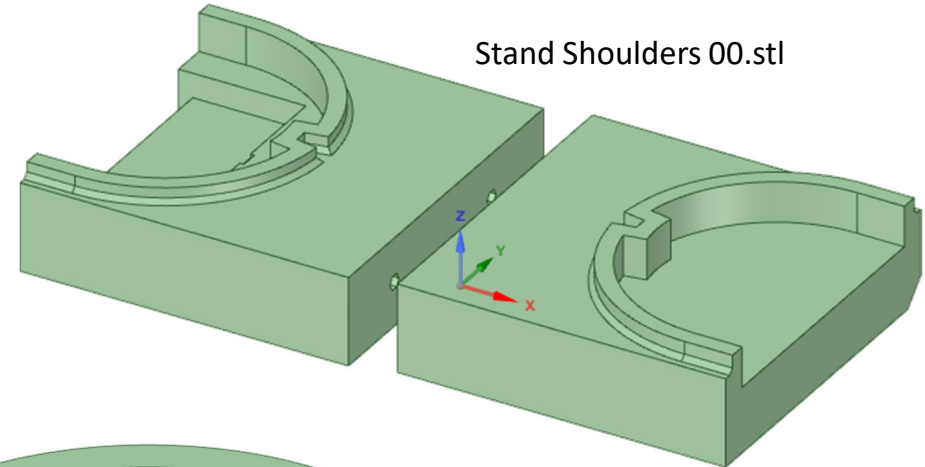
Spindle 00.stl



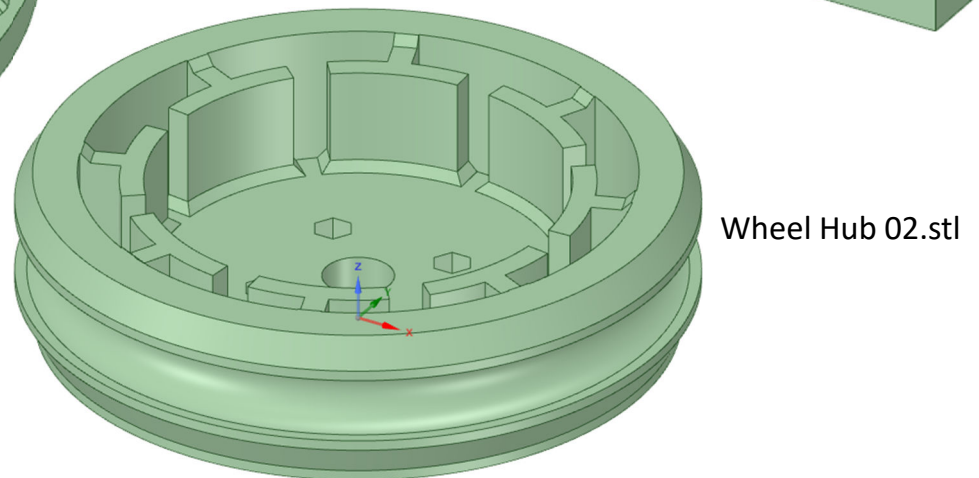
Stand Base Plate 00.stl



Turn Reaction Wheel 01.stl



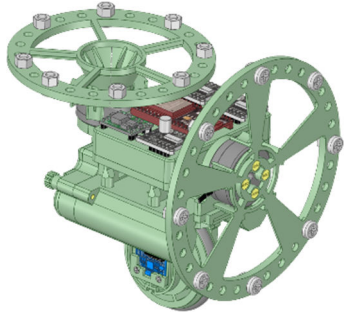
Stand Shoulders 00.stl



Wheel Hub 02.stl

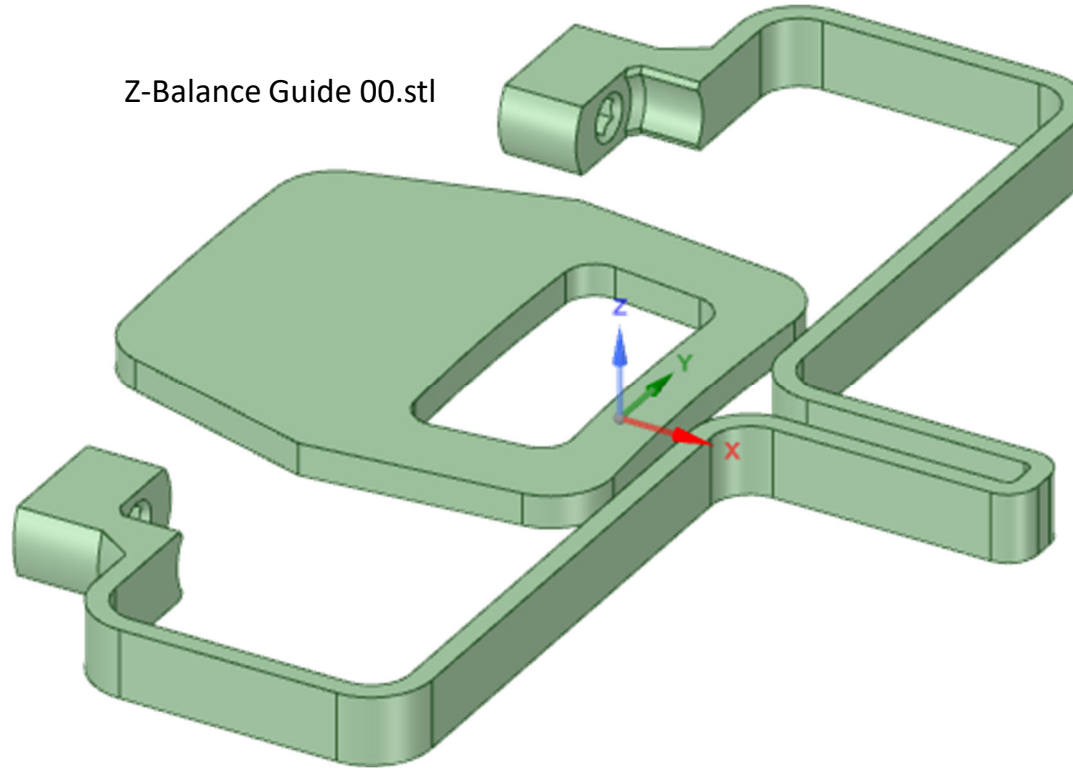
Images are not to scale

Printed Parts

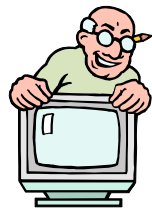
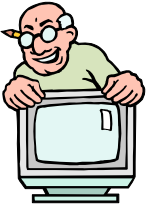


This should help you identify all of the parts needed to build the robot.

Z-Balance Guide 00.stl

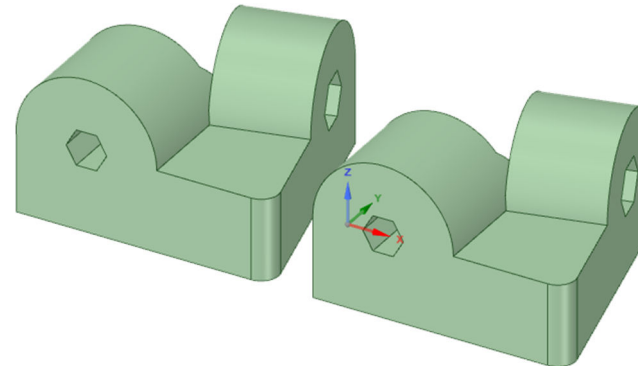


This screws onto the Micro Plate and helps you optimise the Pitch PID controller, without the need for the Roll balance wheel working.



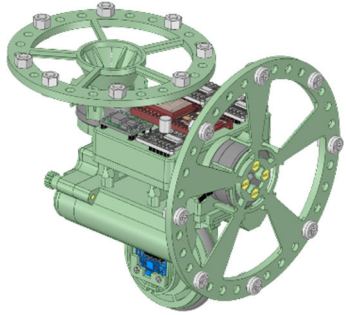
These brackets temporarily screws onto the Micro Plate housing, to support it whilst completing the motor and I2C wiring.

Z-Micro Plates Brackets 00.stl



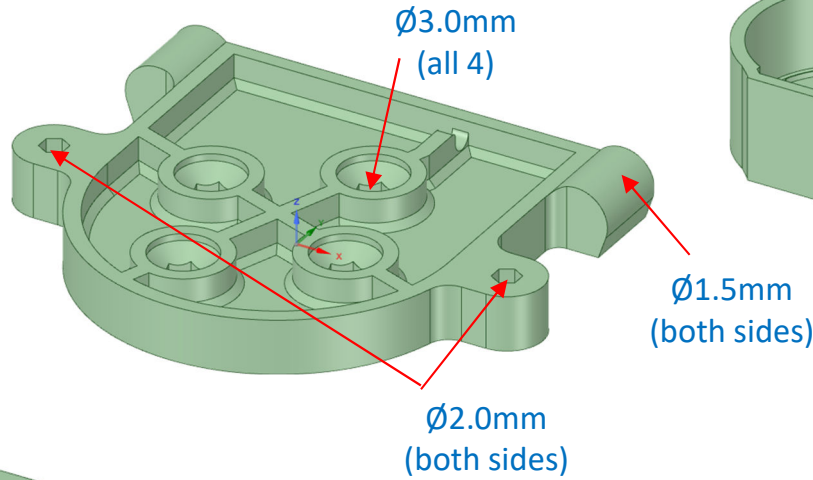
Images are not to scale

Drill Sizes

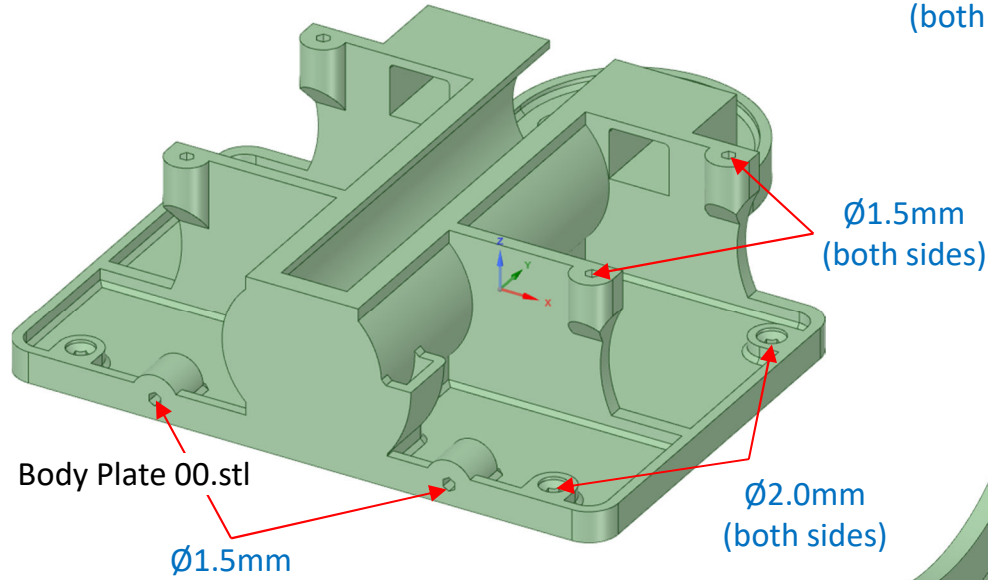
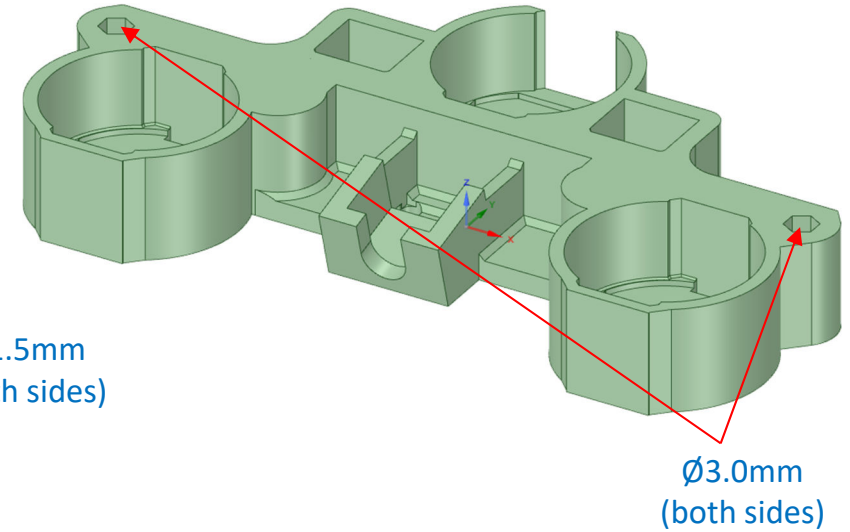


This should help you identify all of the pilot drill and clearance hole sizes.

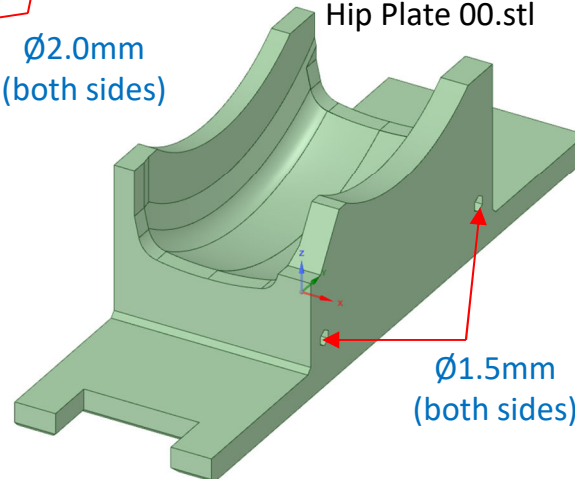
Balance Wheel Mount 00.stl



Battery Cover Body 00.stl



Hip Plate 00.stl



$\text{\textcircled{D}}3.0\text{mm}$ (both ends)

Hip Straps 00.stl

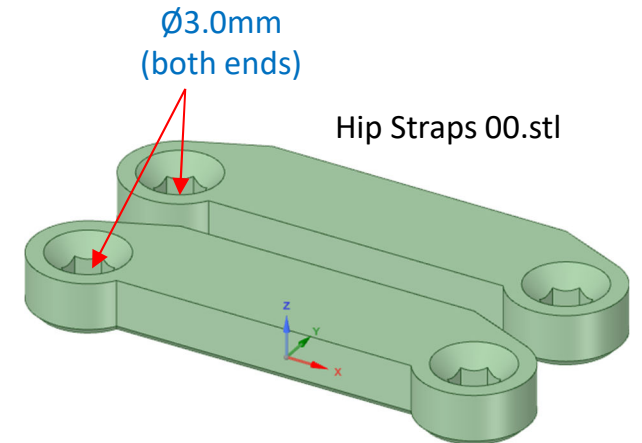
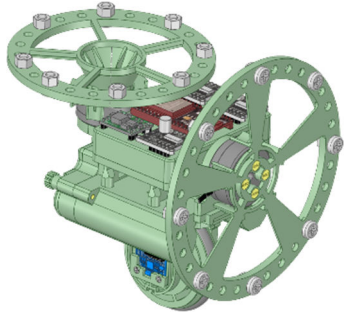
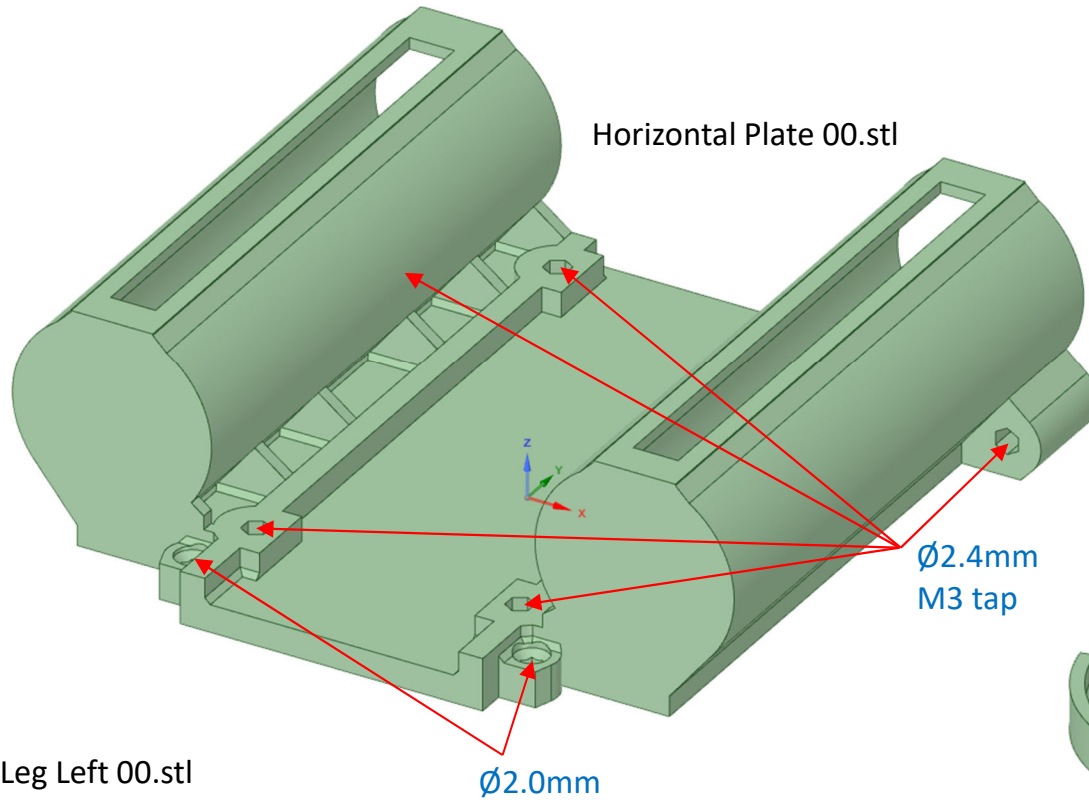


Image are not to scale

Drill Sizes



This should help you identify all of the pilot drill and clearance hole sizes.



MPU Clamp Plate 00.stl

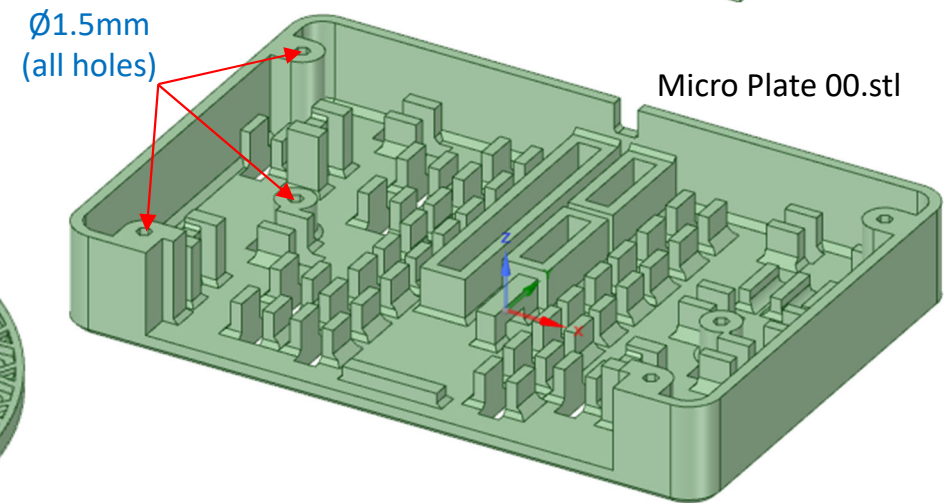
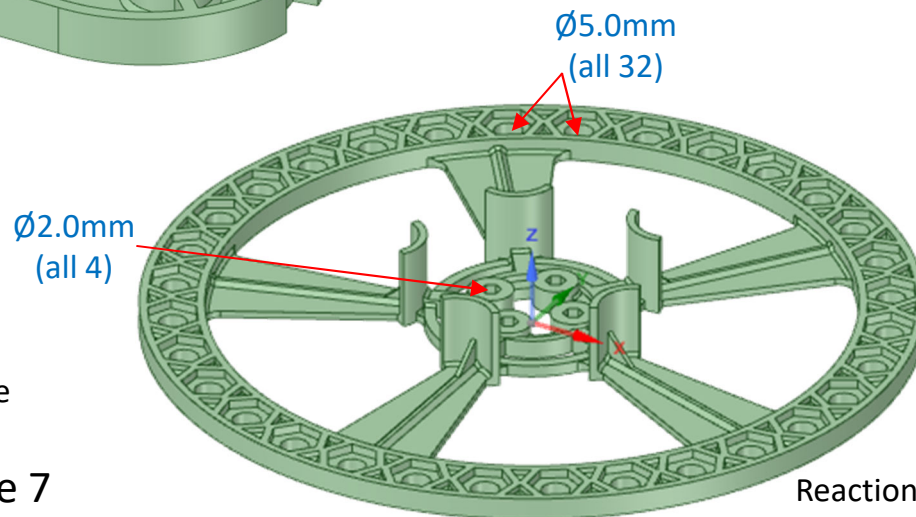
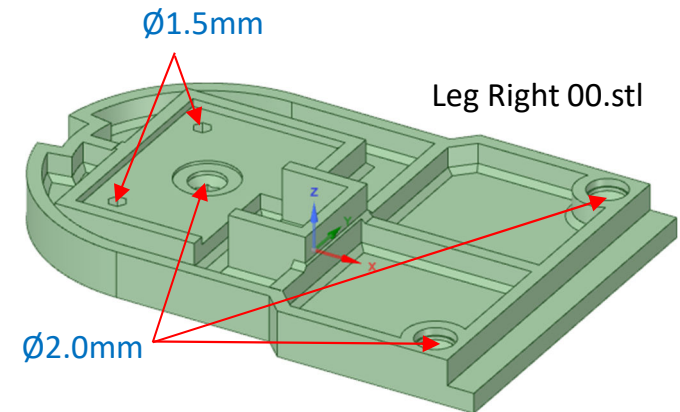
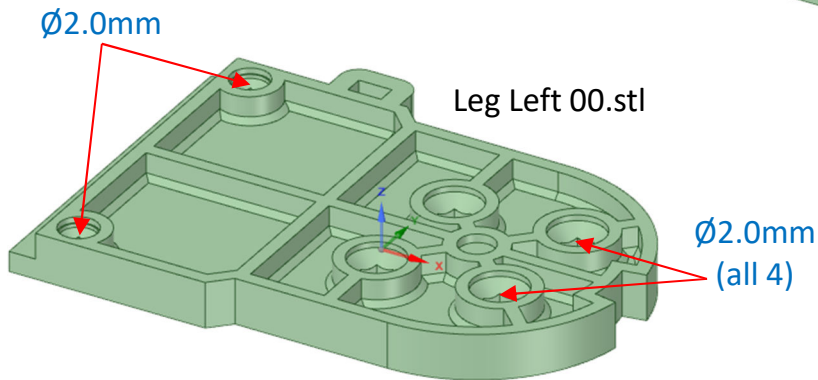
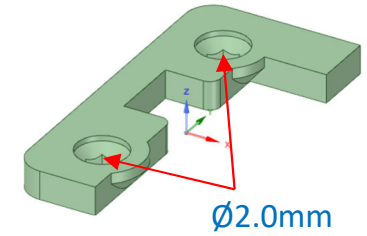
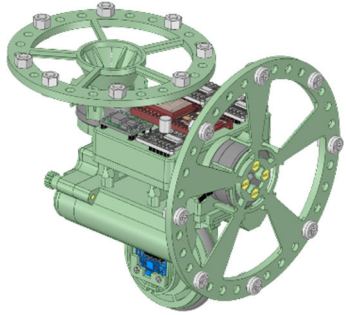
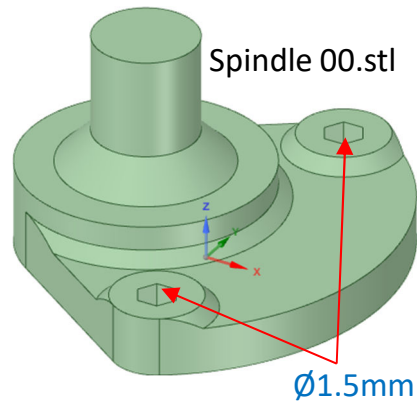


Image are not to scale

Drill Sizes

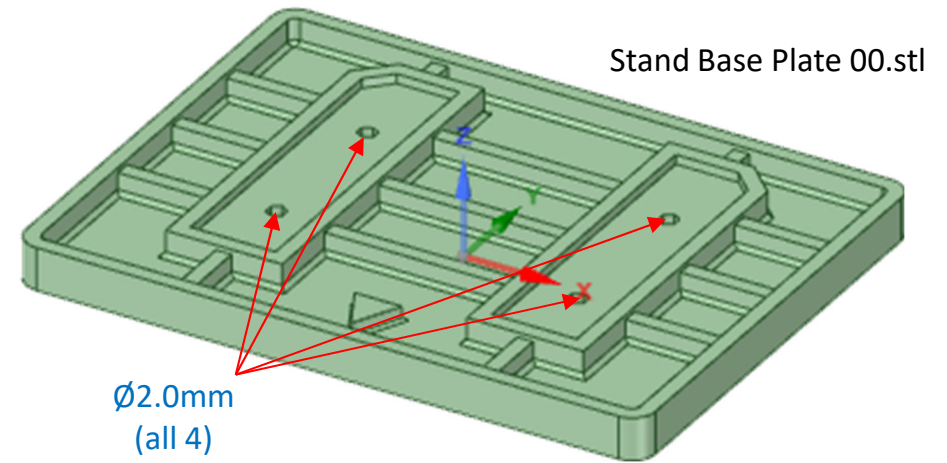


This should help you identify all of the pilot drill and clearance hole sizes.



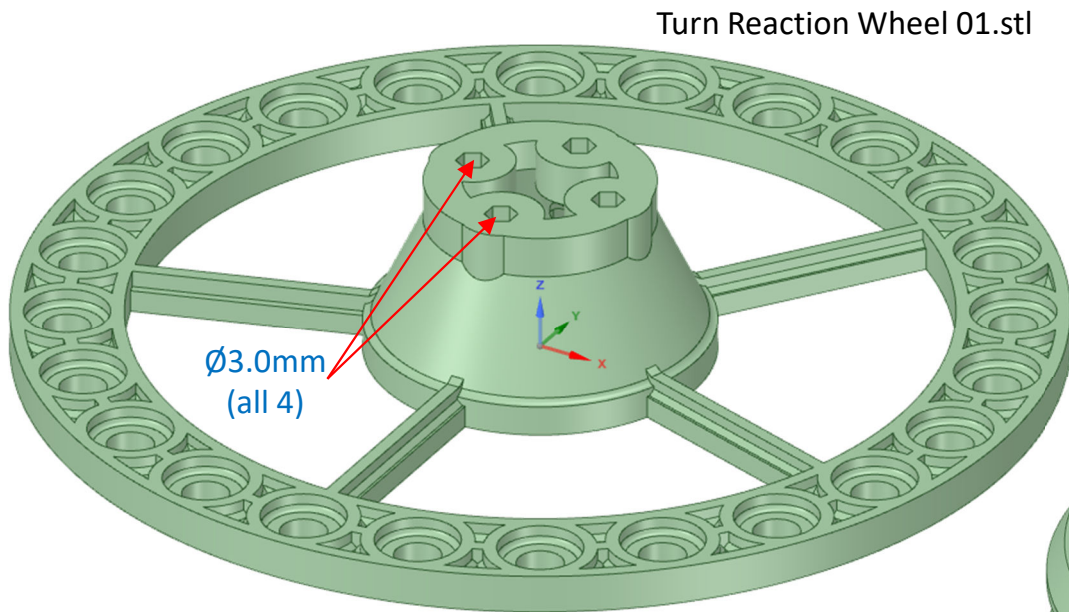
Spindle 00.stl

$\text{\O}1.5\text{mm}$



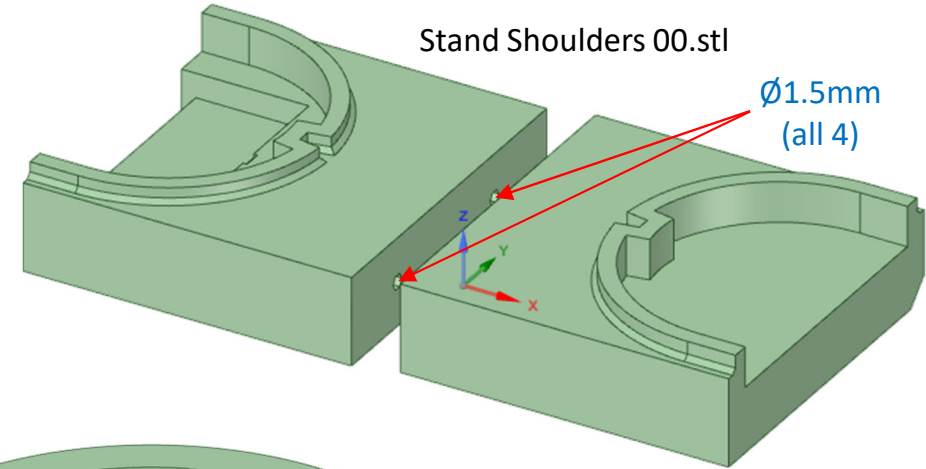
Stand Base Plate 00.stl

$\text{\O}2.0\text{mm}$
(all 4)



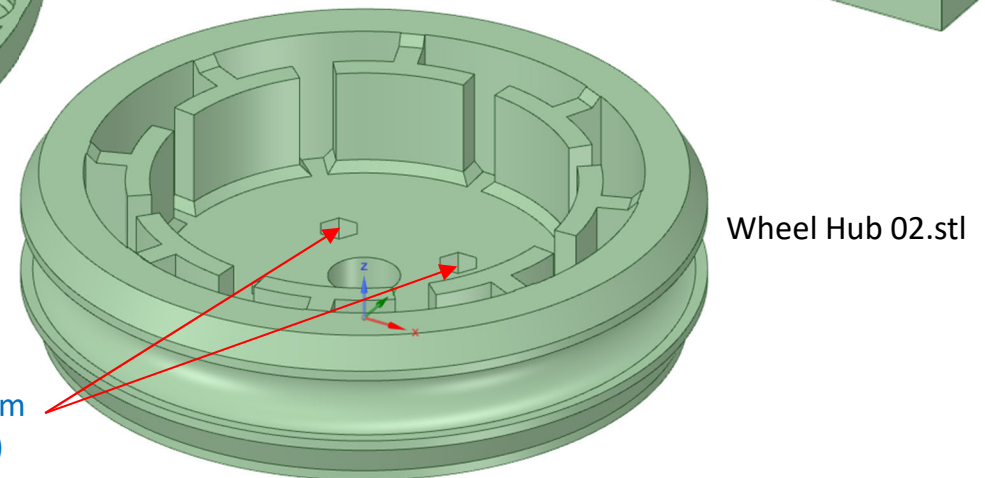
Turn Reaction Wheel 01.stl

$\text{\O}3.0\text{mm}$
(all 4)



Stand Shoulders 00.stl

$\text{\O}1.5\text{mm}$
(all 4)

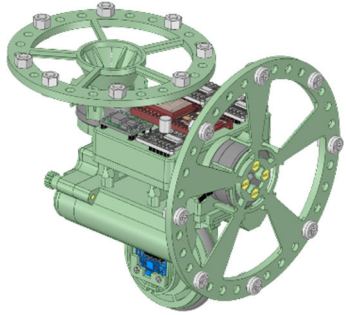


Wheel Hub 02.stl

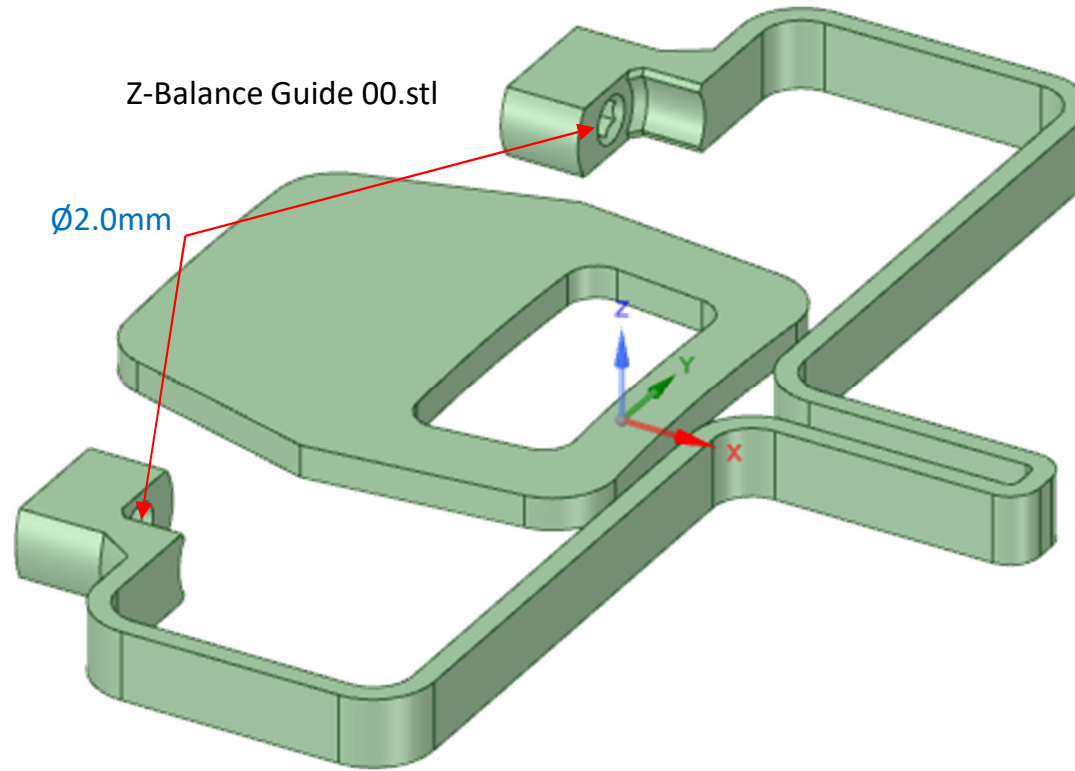
$\text{\O}3.0\text{mm}$
(all 4)

Image are not to scale

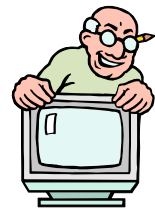
Drill Sizes



This should help you identify all of the pilot drill and clearance hole sizes.



This screws onto the Micro Plate and helps you optimise the Pitch PID controller, without the need for the Roll balance wheel working.



These brackets temporarily screws onto the Micro Plate housing, to support it whilst completing the motor and I2C wiring.

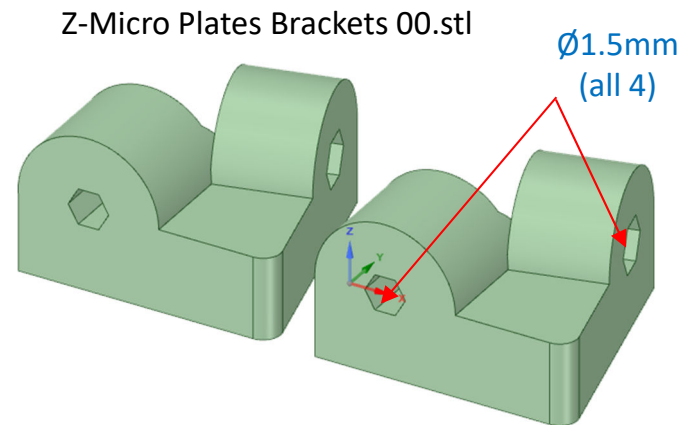


Image are not to scale