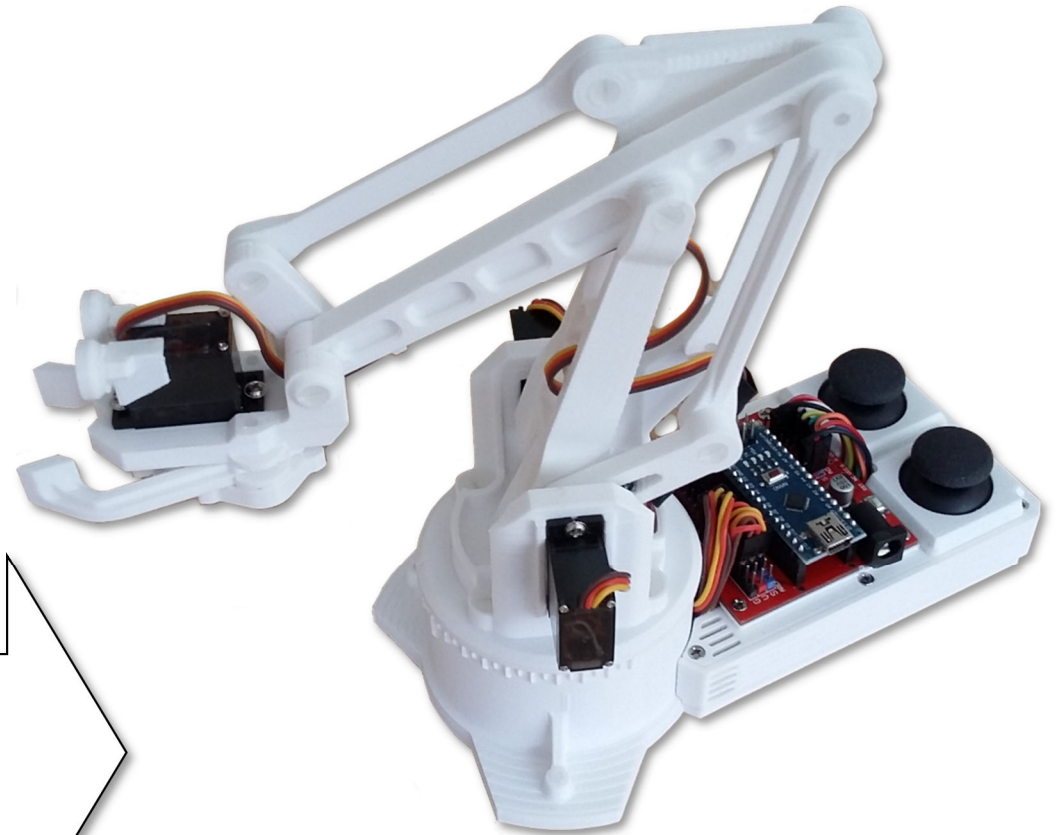
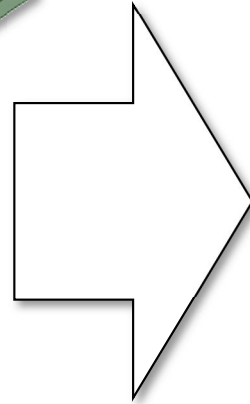
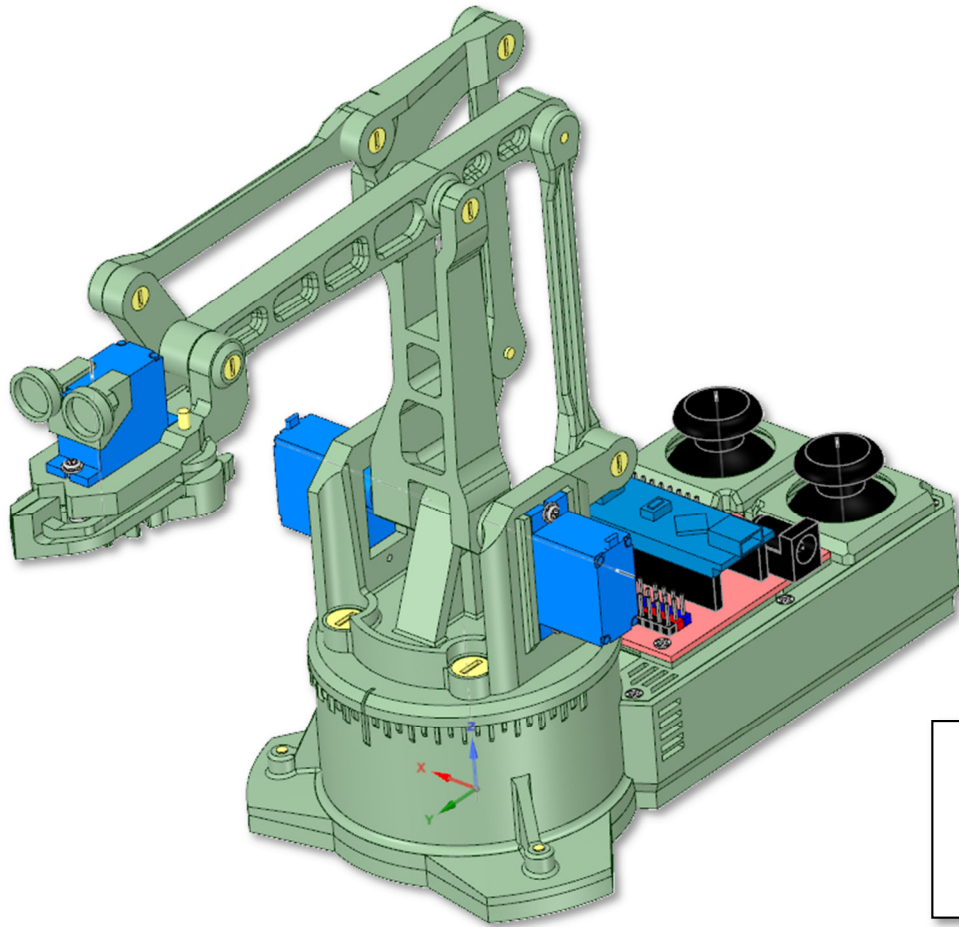
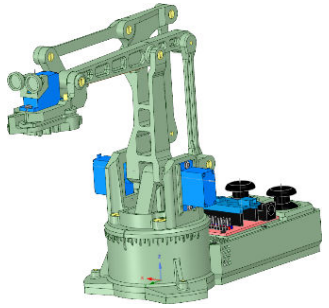


# Reach Robot NANO

## 3D Models



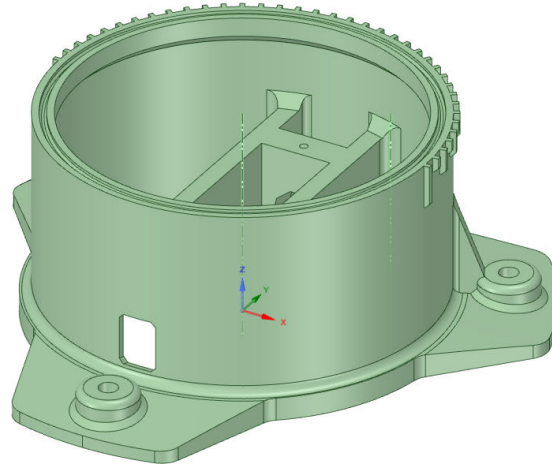
# Printed Parts



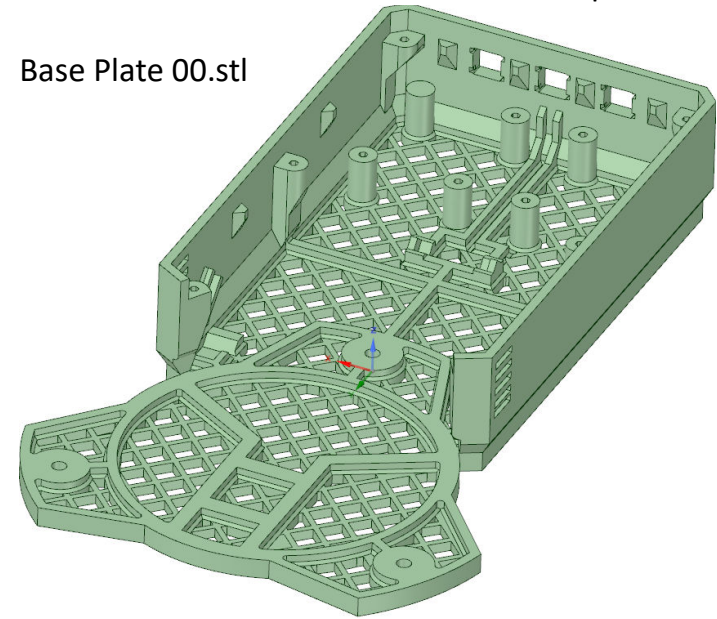
This should help you identify all of the parts needed to build the robot.

Note: M3 pilot holes are 2.5mm  $\emptyset$   
Screw M3 pilot holes 1.4mm  $\emptyset$

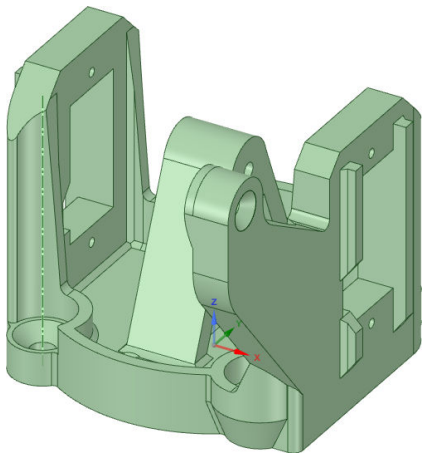
Base Mount 00.stl



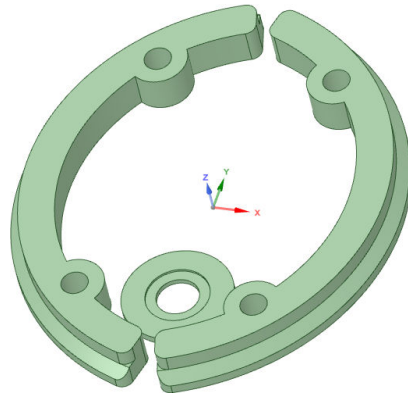
Base Plate 00.stl



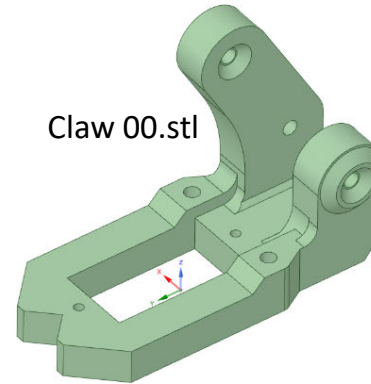
Central Structure 00.stl



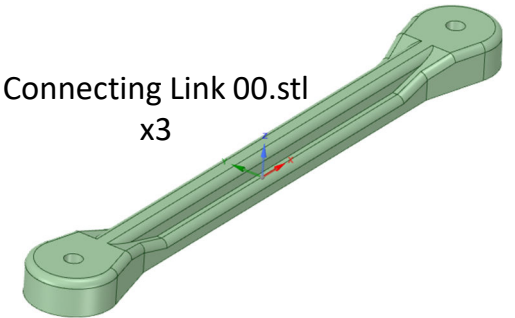
Clamp Plates 00.stl



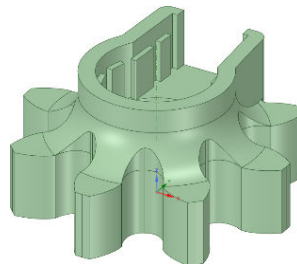
Claw 00.stl



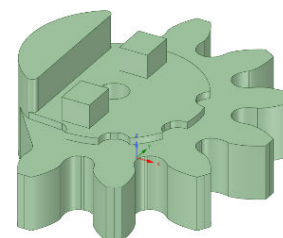
Connecting Link 00.stl  
x3



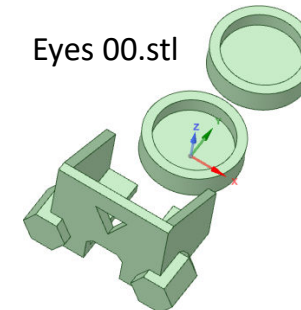
Drive Gear 00.stl



Driven Gear 00.stl



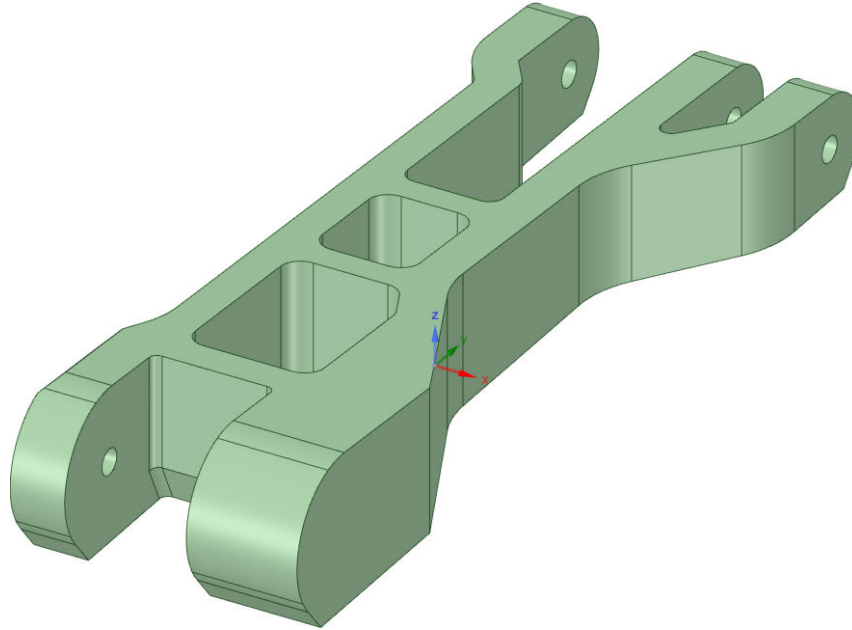
Eyes 00.stl



Models are not to scale

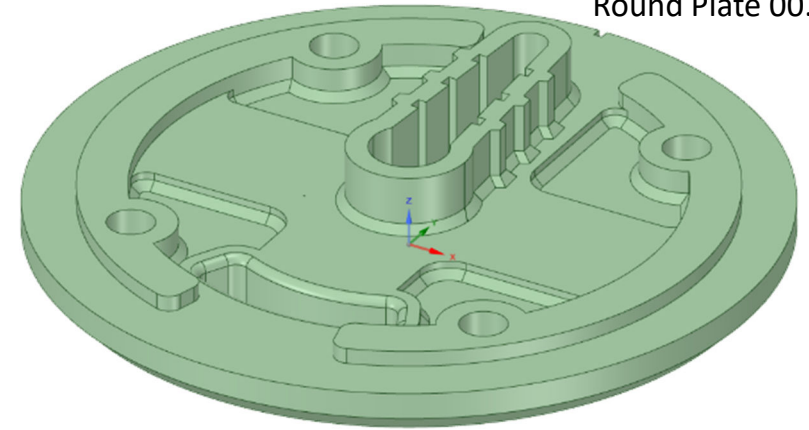
# Printed Parts

Forward Drive Arm 00.stl



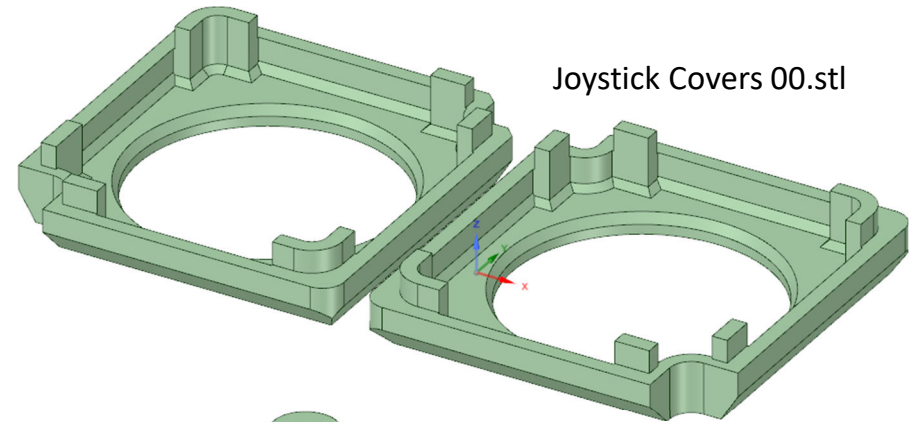
Note: M3 pilot holes are 2.5mm  $\varnothing$   
Screw M3 pilot holes 1.4mm  $\varnothing$

Round Plate 00.stl

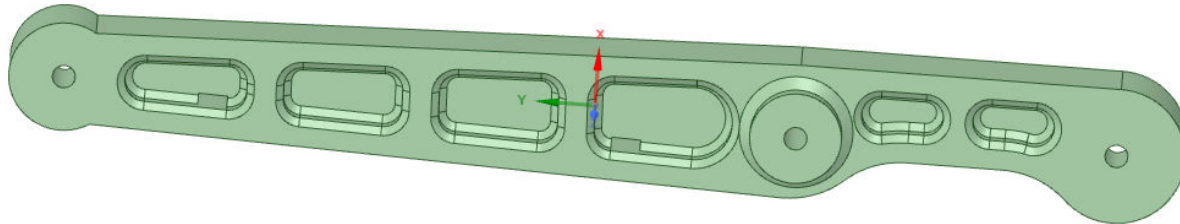


This should help you identify all of the parts needed to build the robot.

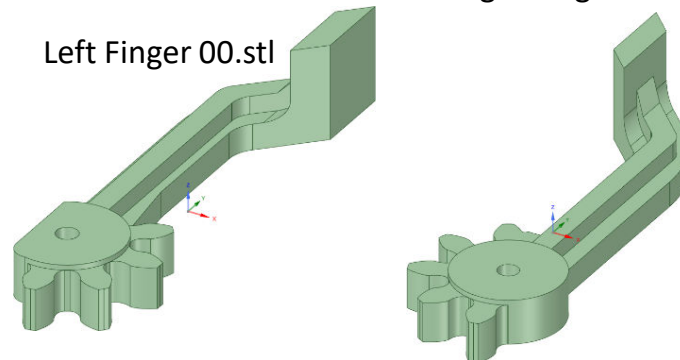
Joystick Covers 00.stl



Horizontal Arm 00.stl

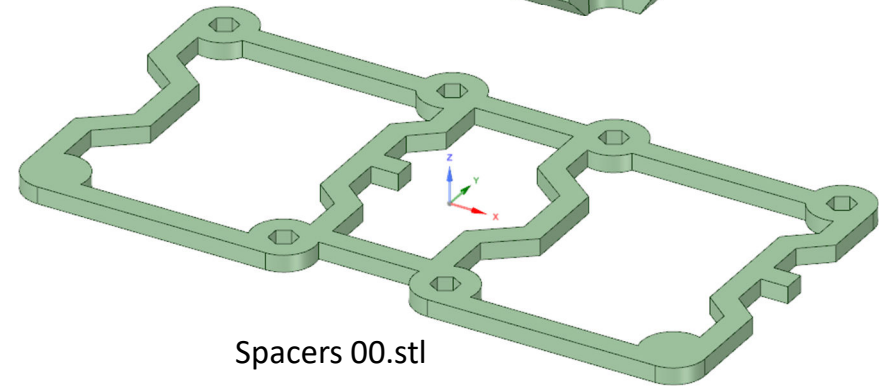


Right Finger 00.stl



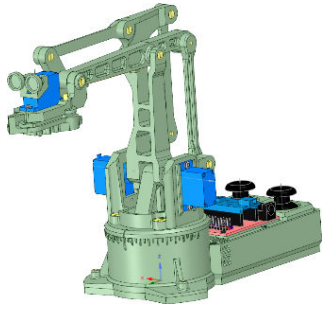
Left Finger 00.stl

Spacers 00.stl



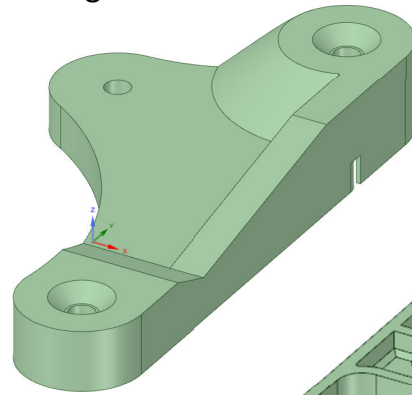
Models are not to scale

# Printed Parts

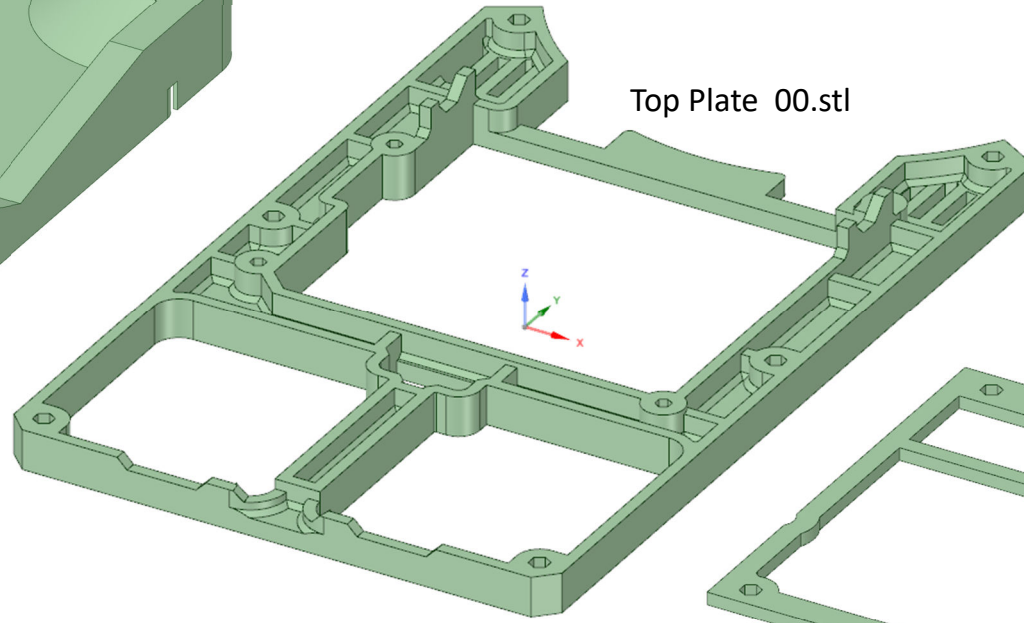


This should help you identify all of the parts needed to build the robot.

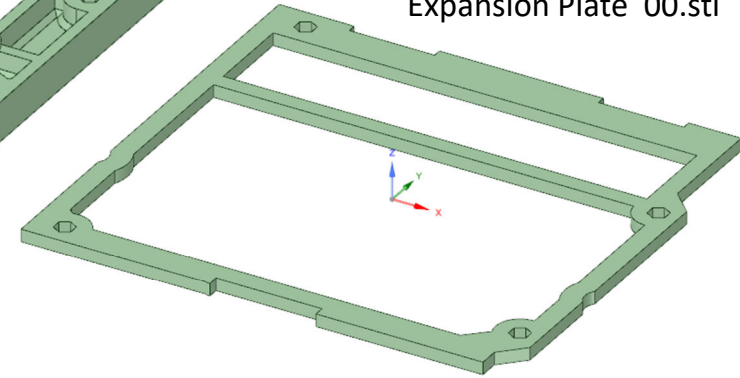
Triangular Link 00.stl



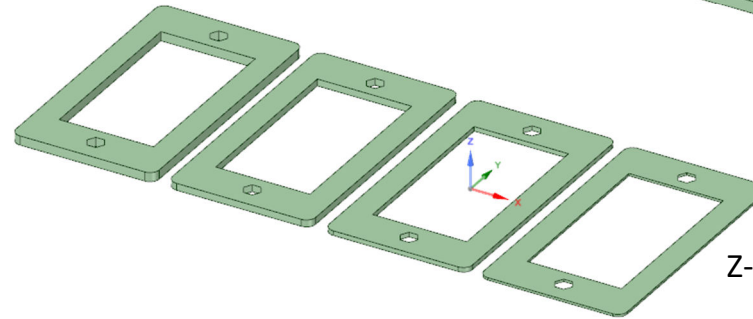
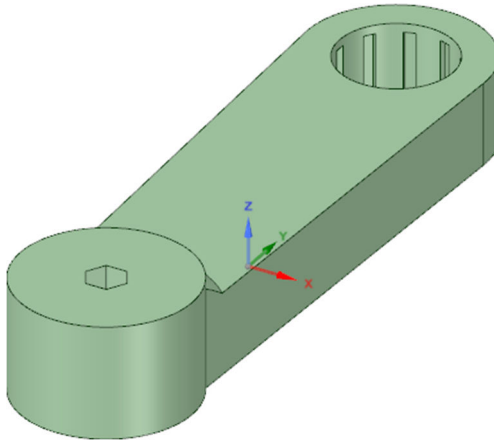
Top Plate 00.stl



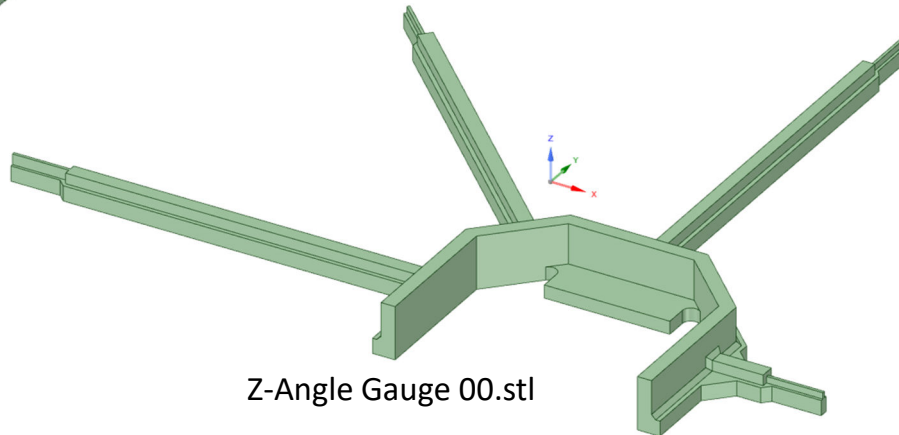
Expansion Plate 00.stl



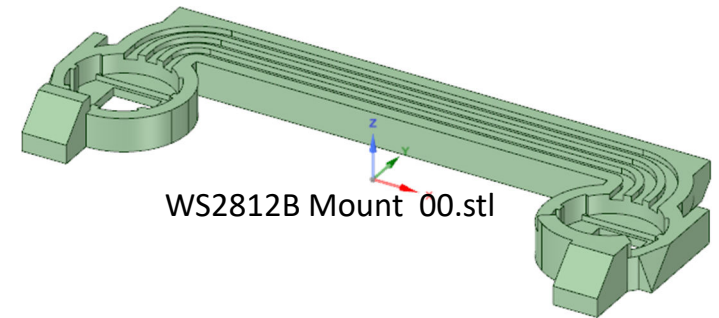
Vertical Drive Arm 00.stl



Z-Shim Pack 00.stl



Z-Angle Gauge 00.stl



WS2812B Mount 00.stl

Note: M3 pilot holes are 2.5mm  $\varnothing$   
Screw M3 pilot holes 1.4mm  $\varnothing$

Models are not to scale