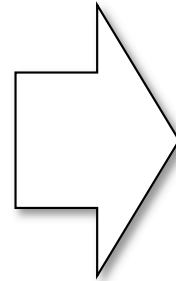
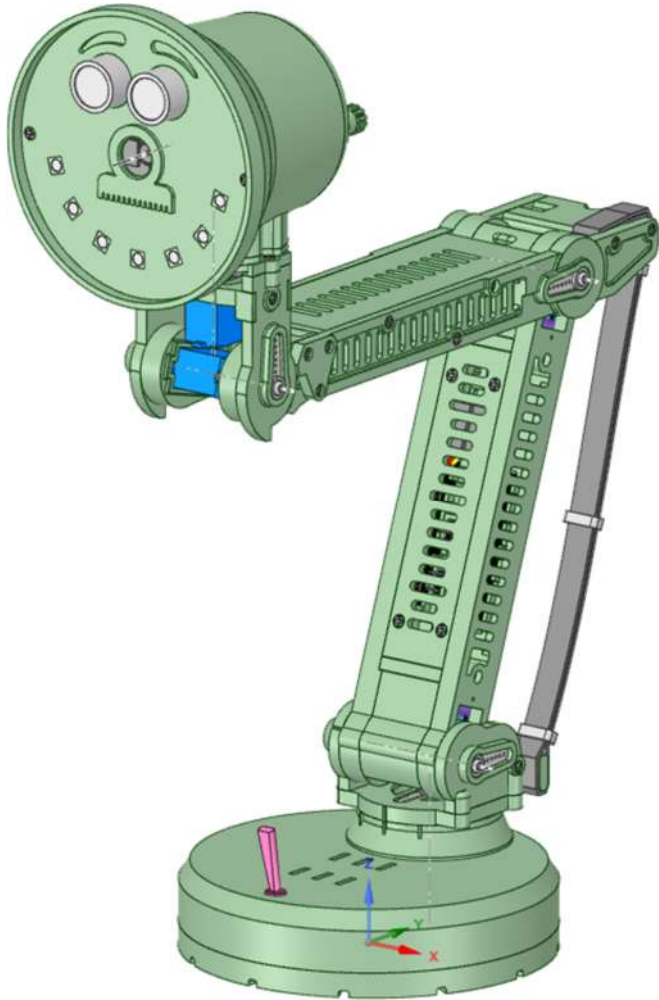


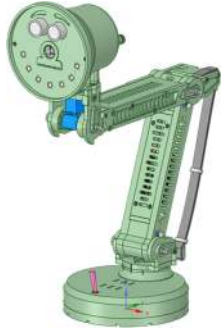
# PIXAiR Lamp

## 3D Parts



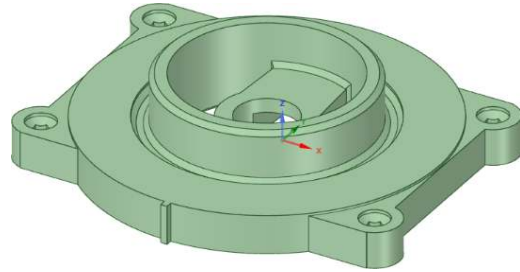
You can download a .zip file containing all of the 3D models for PIX.

# Printed Parts

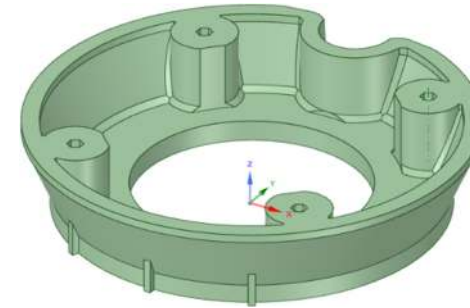


This should help you identify all of the parts needed to build the robot.

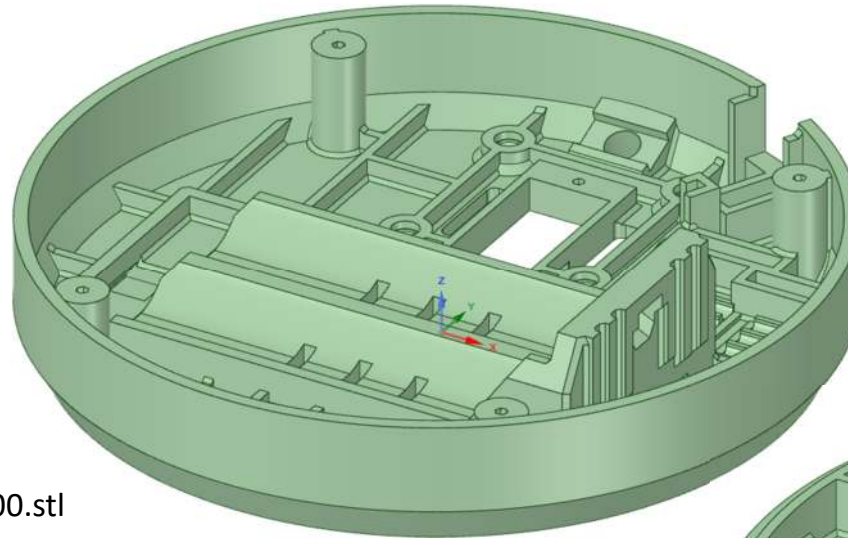
Arm Mount Base Plate 00.stl



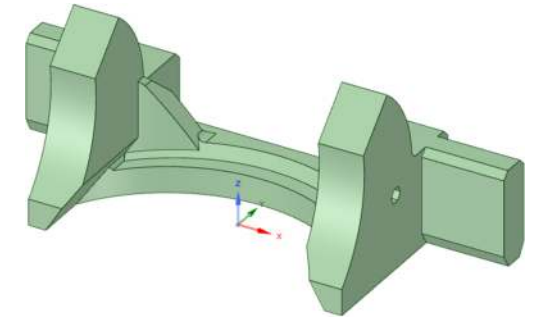
Arm Mount Cone 00.stl



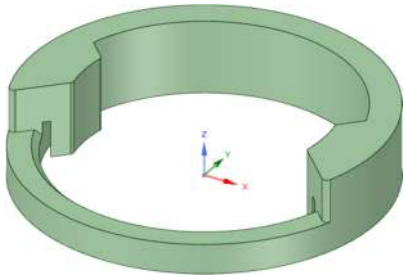
Base Cover 00.stl



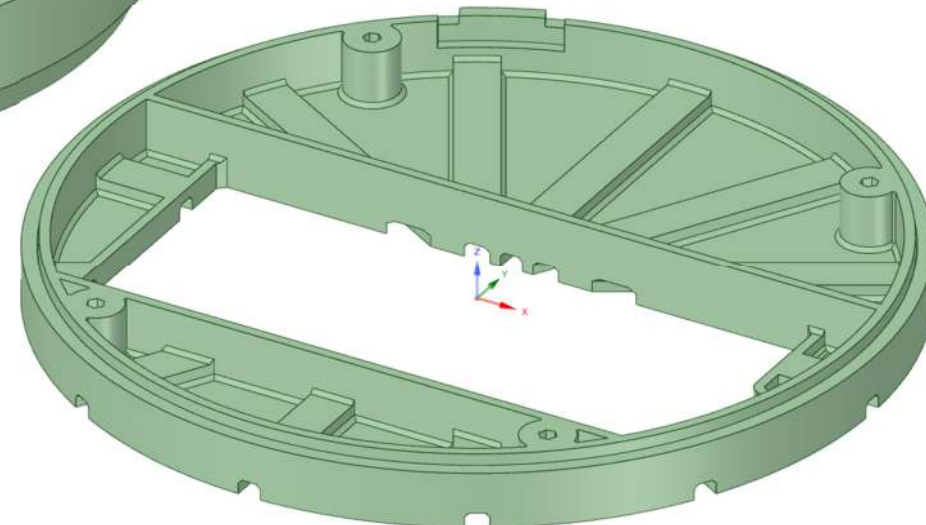
Base Mount Arm Stop 00.stl



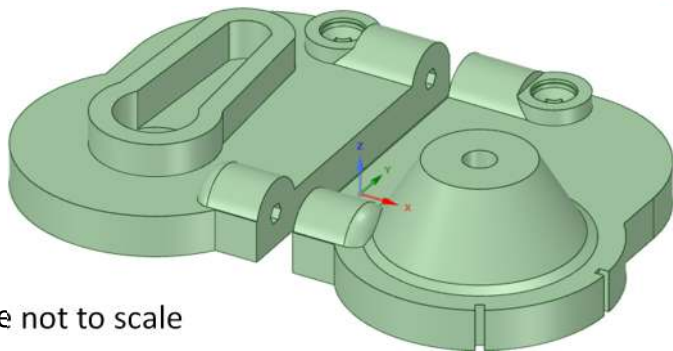
Arm Mount Base Plate 00.stl



Base Plate 00.stl

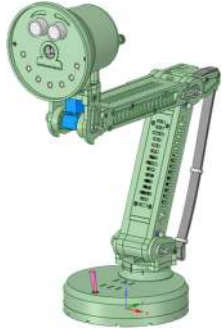


Base Mount Plates 00.stl



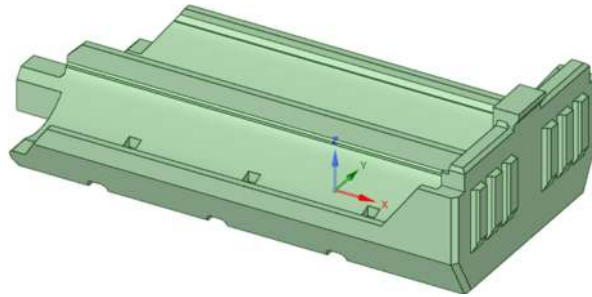
Images are not to scale

# Printed Parts

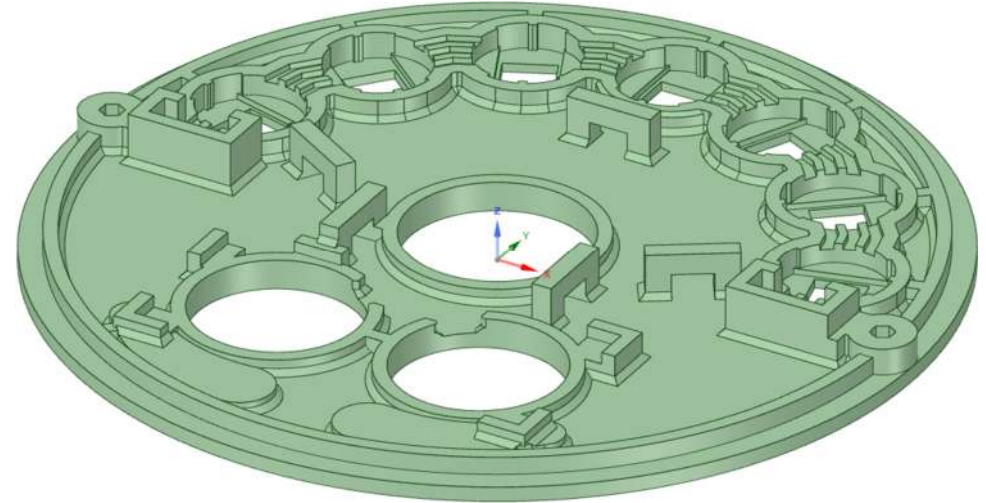


This should help you identify all of the parts needed to build the robot.

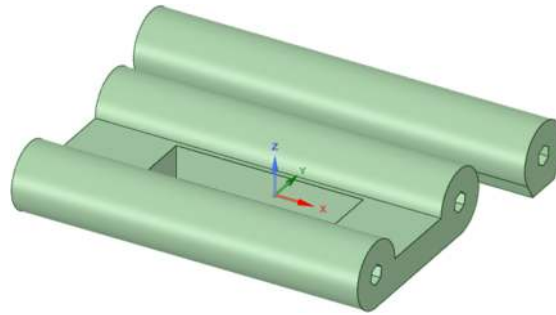
Battery Box Cover 00.stl



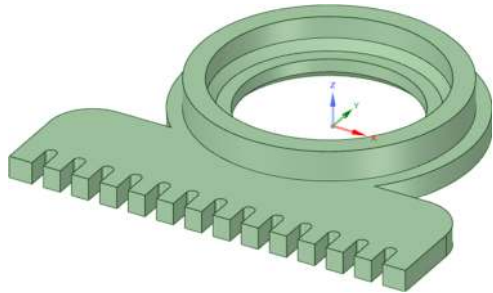
Face 00.stl



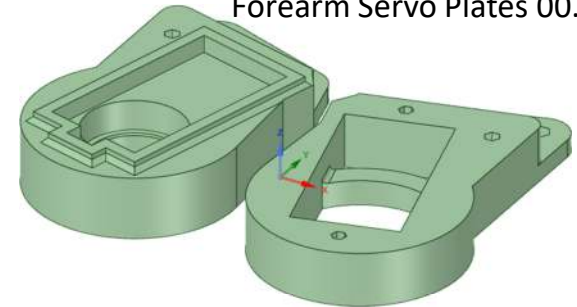
Forearm Bridges 00.stl



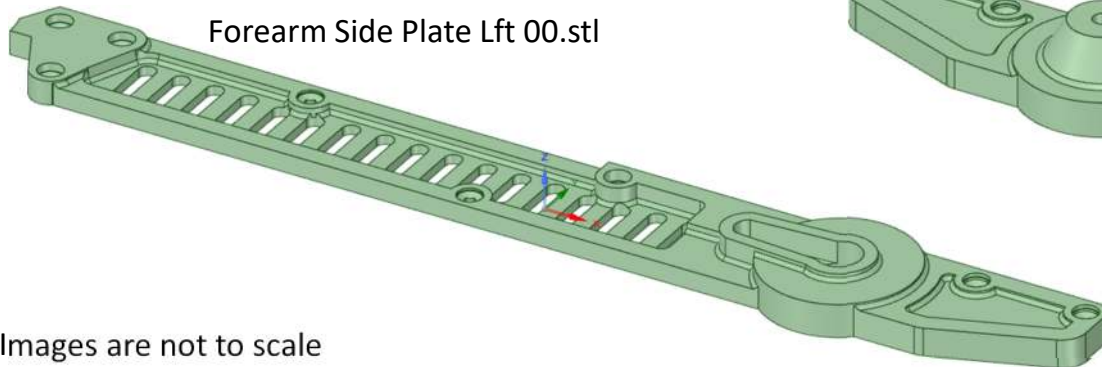
Face Lense Disc 00.stl



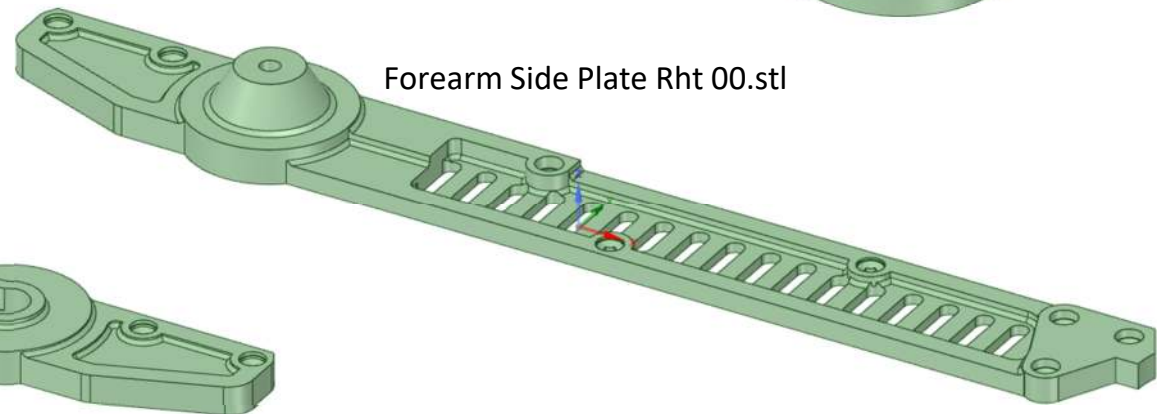
Forearm Servo Plates 00.stl



Forearm Side Plate Lft 00.stl

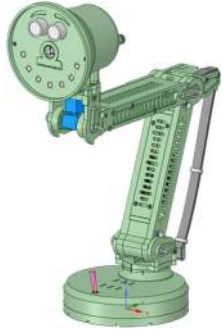


Forearm Side Plate Rht 00.stl



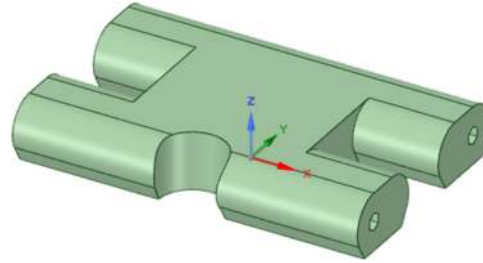
Images are not to scale

# Printed Parts

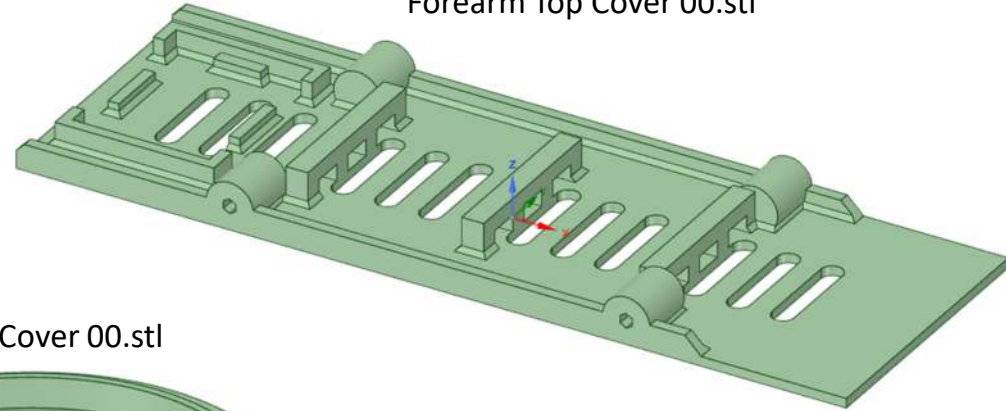


This should help you identify all of the parts needed to build the robot.

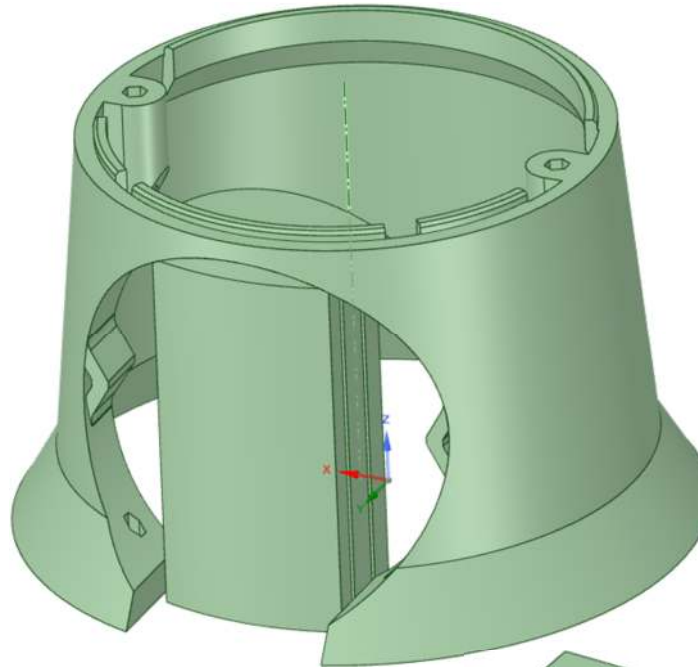
Forearm Tension Bridge 00.stl



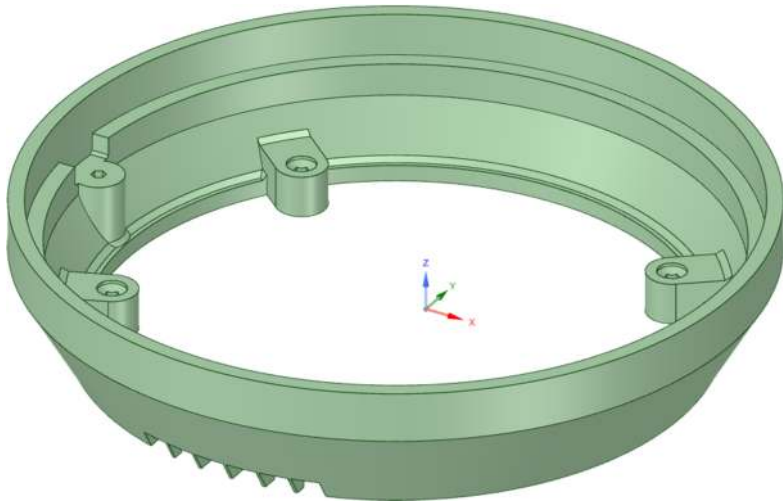
Forearm Top Cover 00.stl



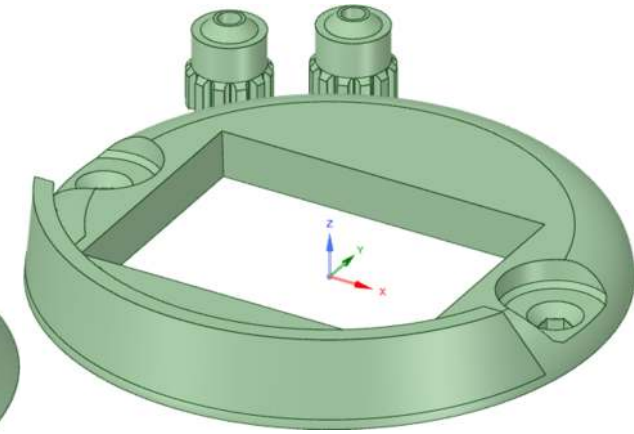
Lamp Rear Cover 00.stl



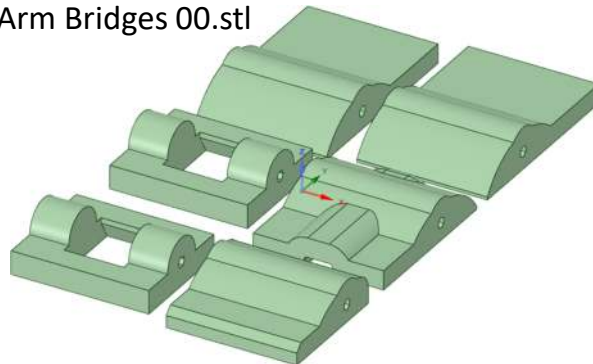
Lamp Front Cover 00.stl



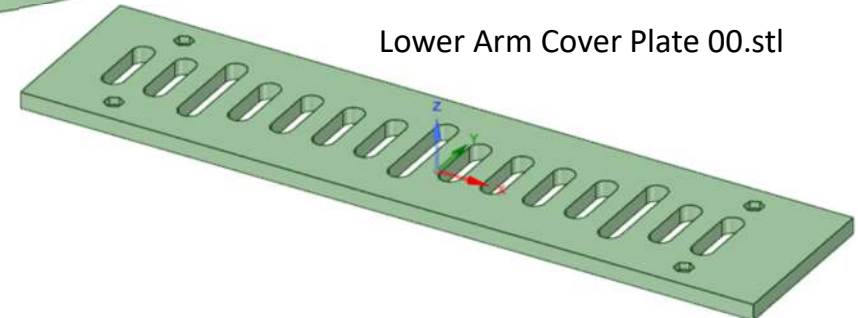
Lamp Rear Cover Cap 01.stl



Lower Arm Bridges 00.stl

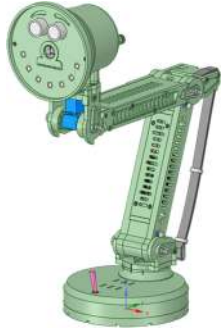


Lower Arm Cover Plate 00.stl



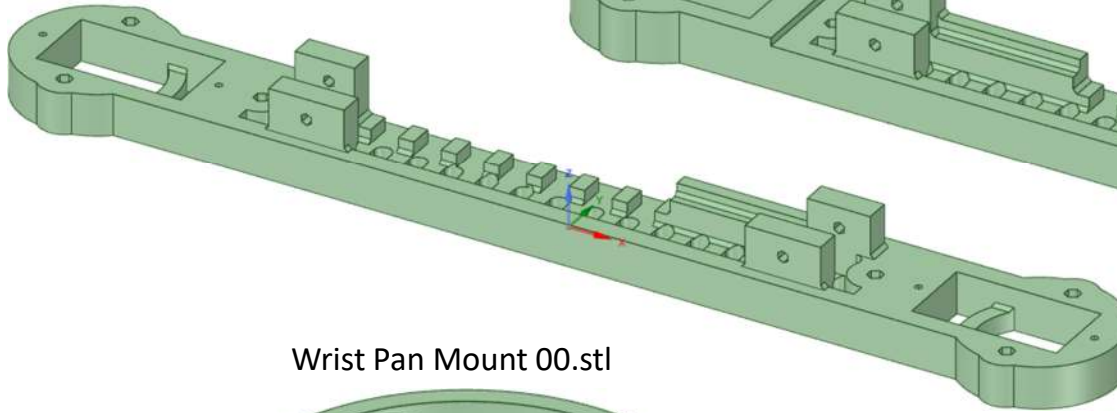
Images are not to scale

# Printed Parts

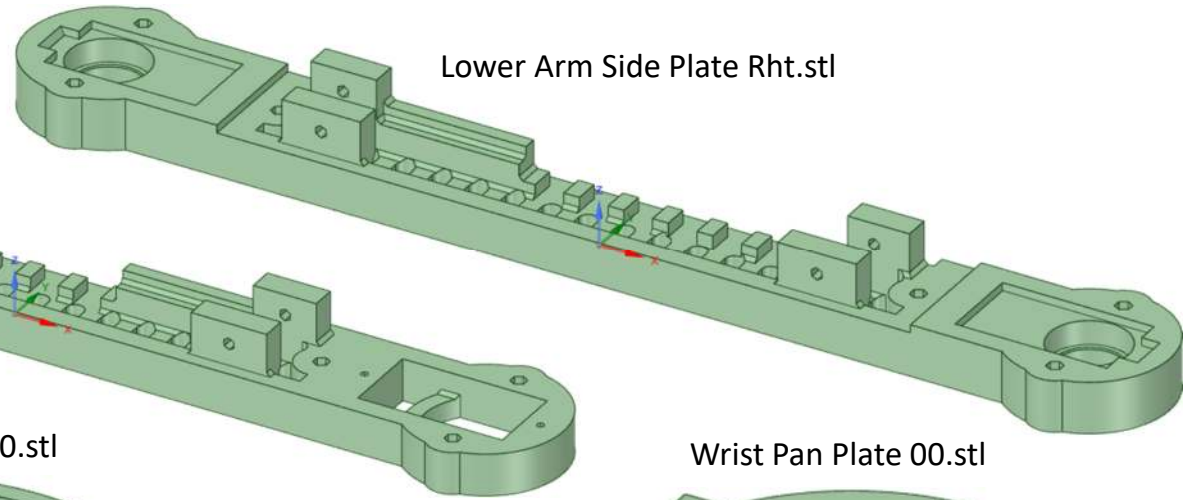


This should help you identify all of the parts needed to build the robot.

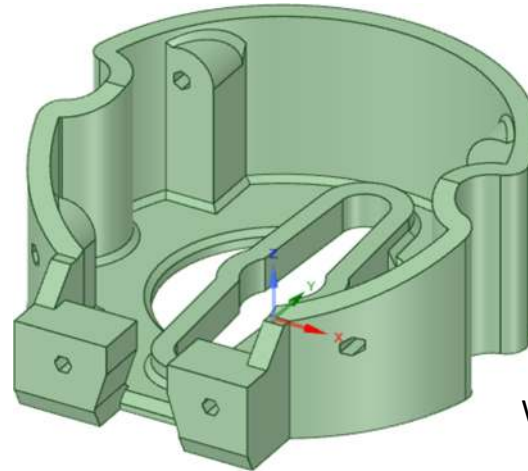
Lower Arm Side Plate Lft.stl



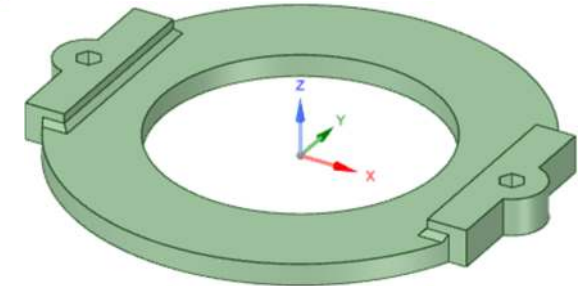
Lower Arm Side Plate Rht.stl



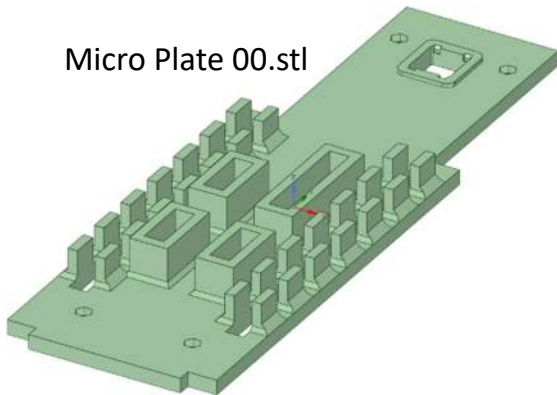
Wrist Pan Mount 00.stl



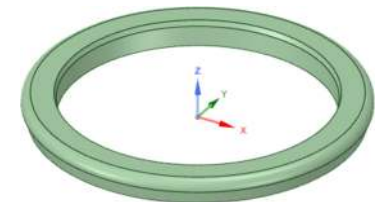
Wrist Pan Plate 00.stl



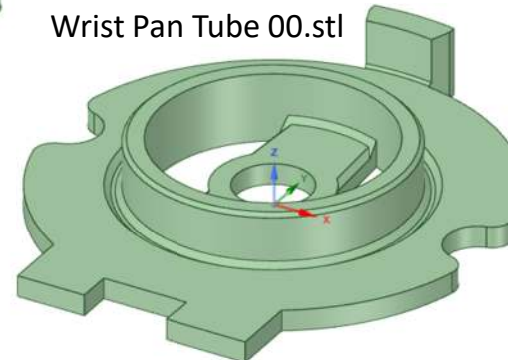
Micro Plate 00.stl



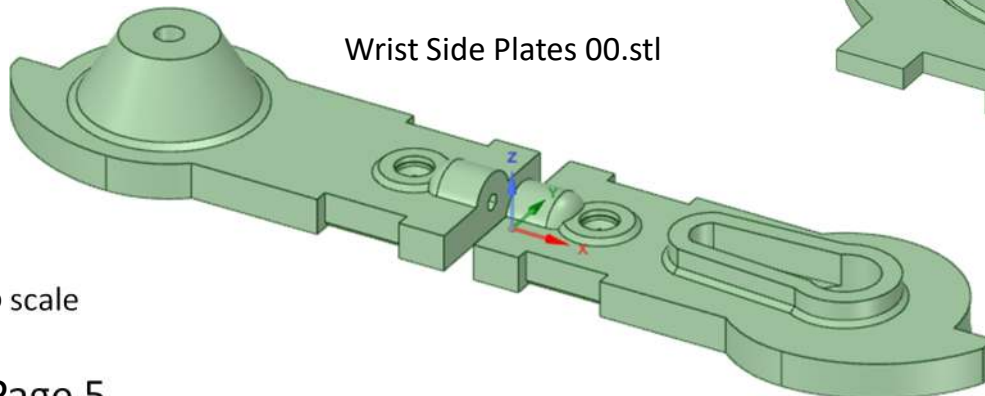
Wrist Pan Ring 00.stl



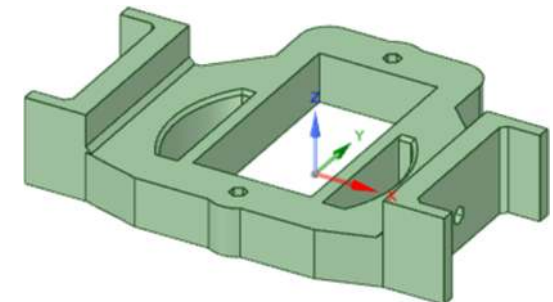
Wrist Pan Tube 00.stl



Wrist Side Plates 00.stl

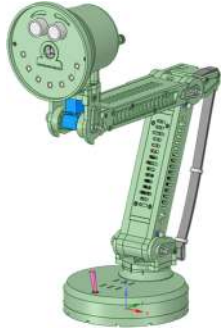


Wrist Servo Mount 00.stl



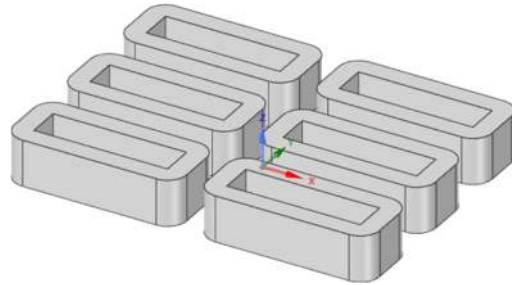
Images are not to scale

# Printed Parts

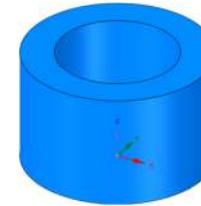


These parts are supplementary items, not needed for the robot build.

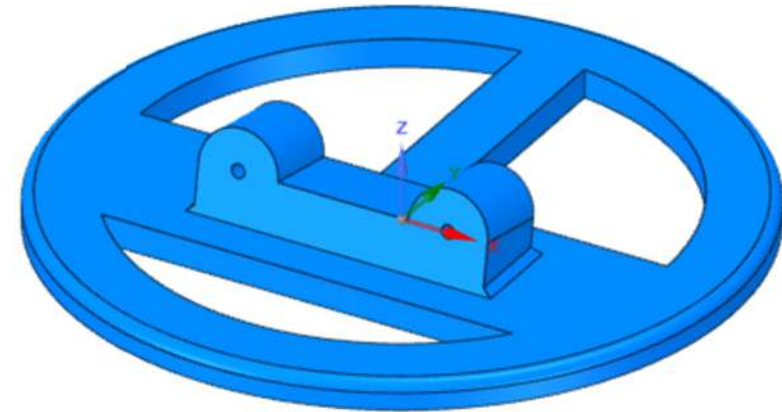
Z – Band Clips 00.stl



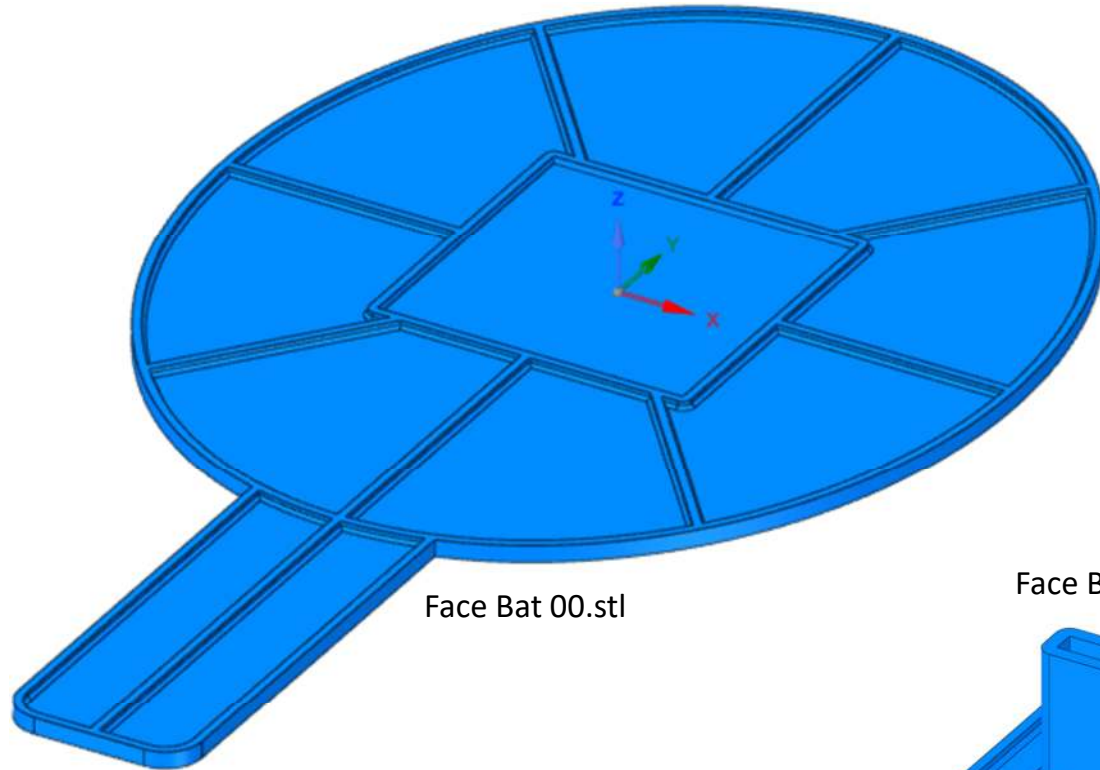
Z – Flange Bearing Press Ring.stl



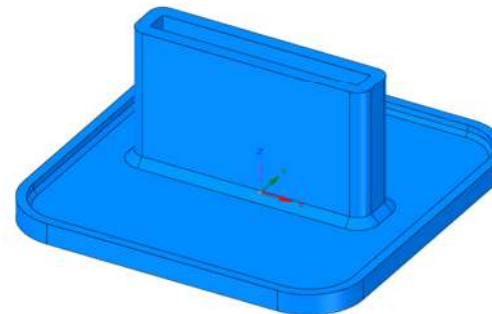
Z – Husky Stand.stl



Face Bat 00.stl

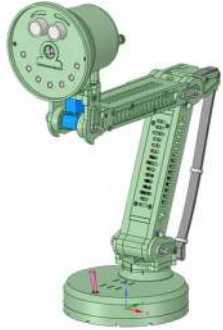


Face Bat Foot 00.stl

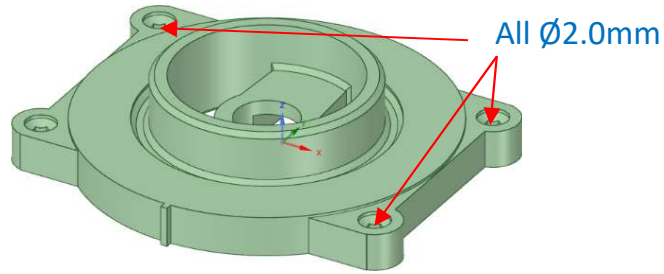


Images are not to scale

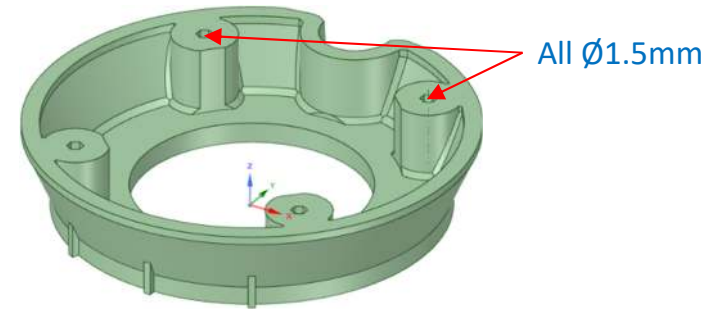
# Printed Parts



Arm Mount Base Plate 00.stl

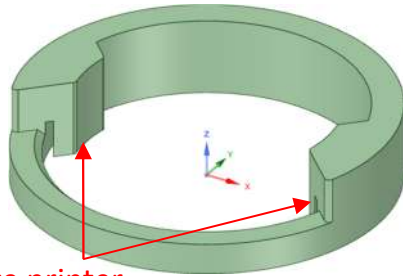


Arm Mount Cone 00.stl



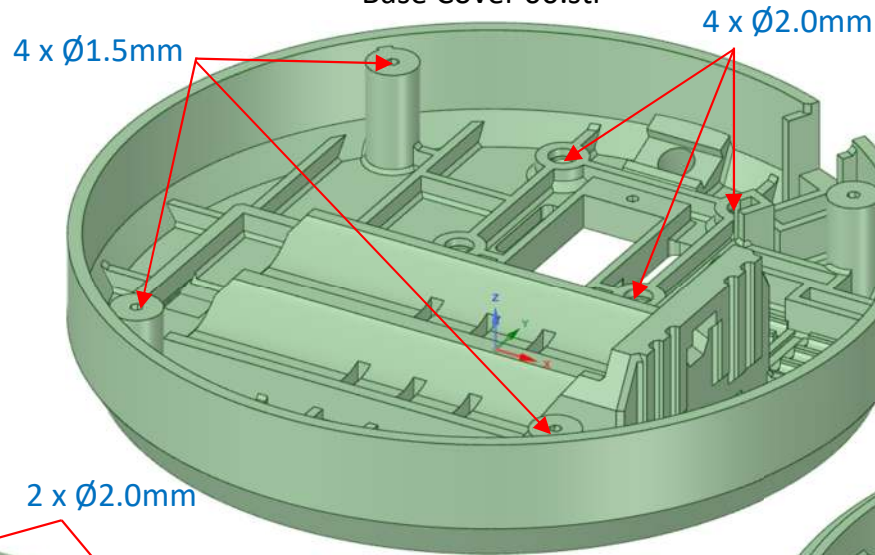
This should help you identify all of the pilot drill and clearance hole sizes.

Arm Mount Base Plate 00.stl

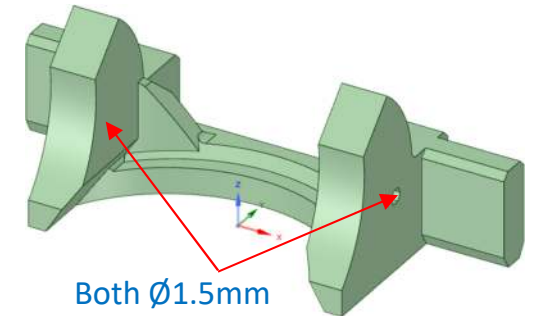


Remove printer support material

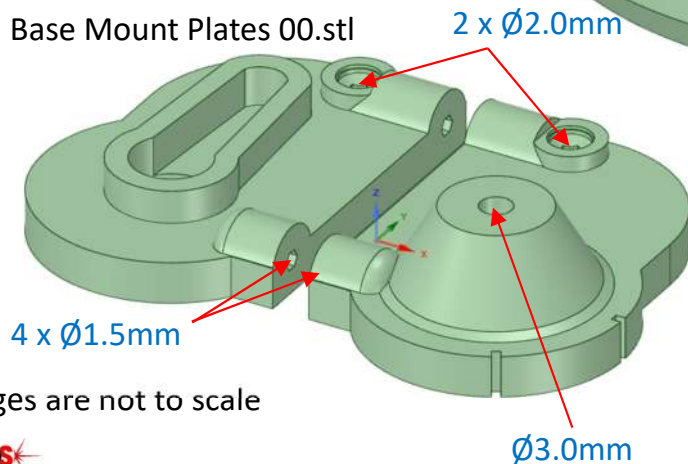
Base Cover 00.stl



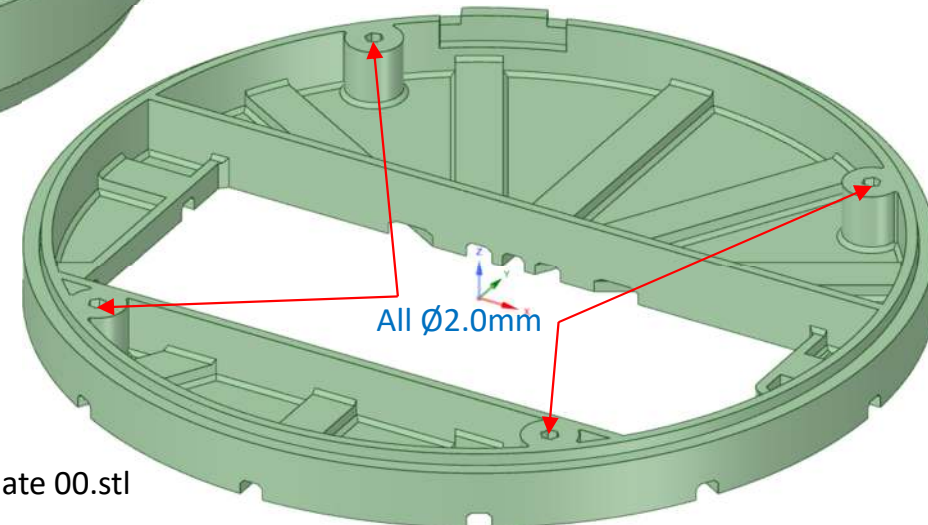
Base Mount Arm Stop 00.stl



Base Mount Plates 00.stl

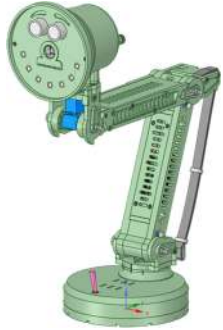


Base Plate 00.stl



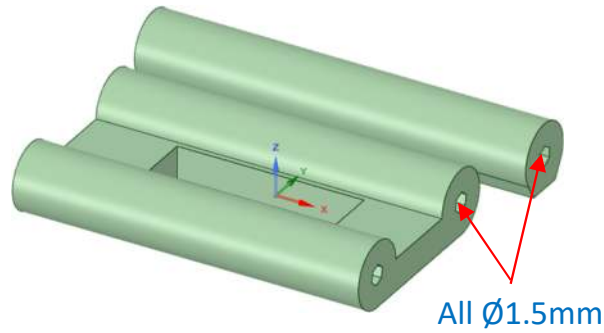
Images are not to scale

# Printed Parts

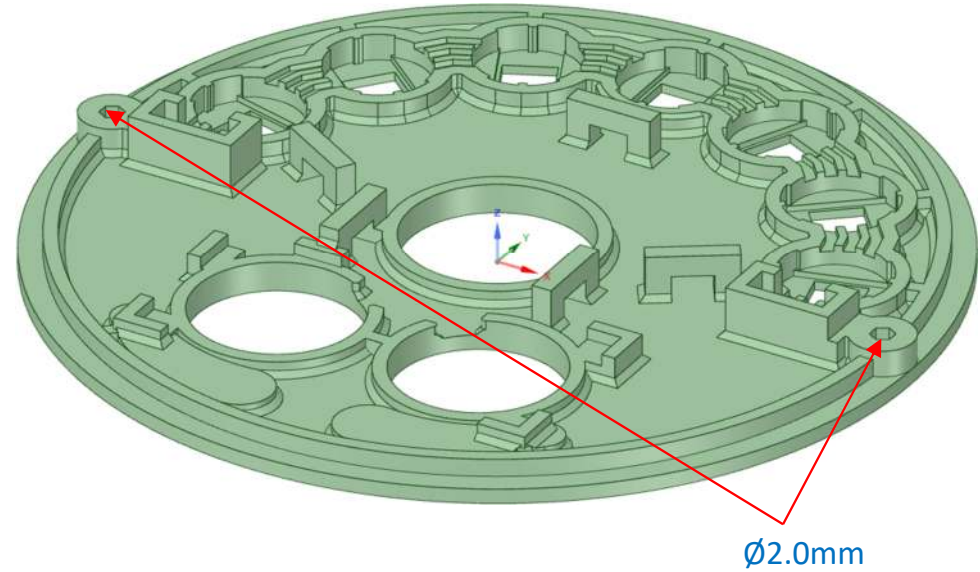


This should help you identify all of the pilot drill and clearance hole sizes.

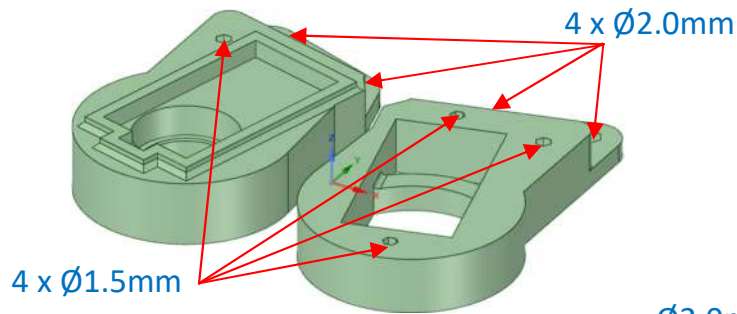
Forearm Bridges 00.stl



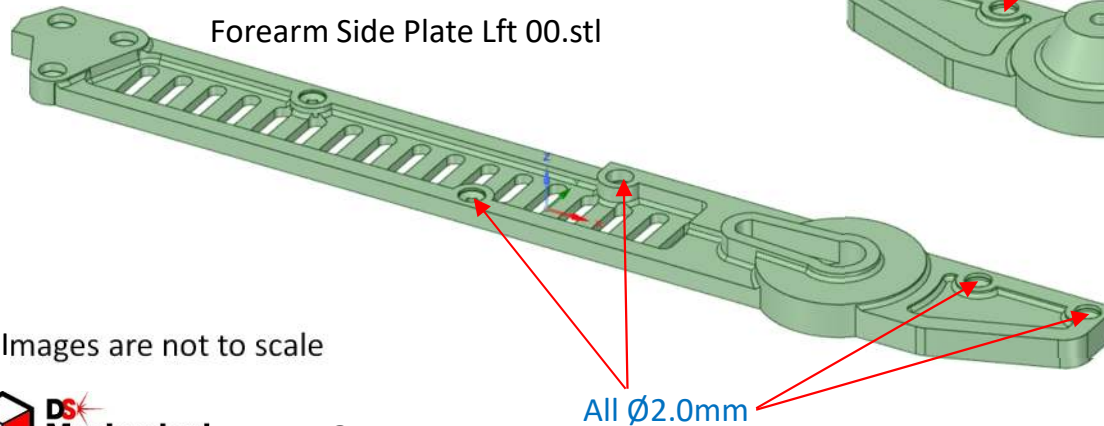
Face 00.stl



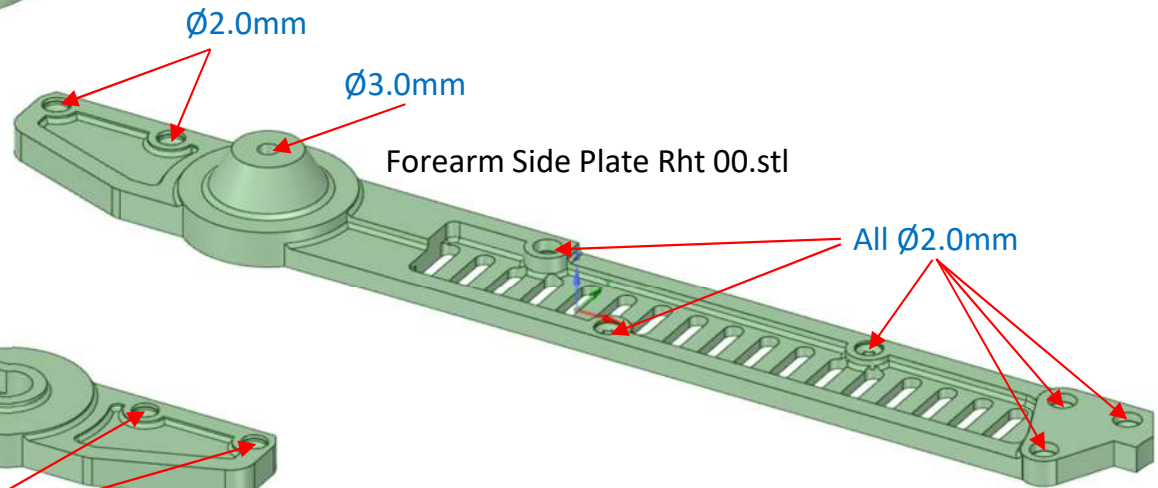
Forearm Servo Plates 00.stl



Forearm Side Plate Lft 00.stl



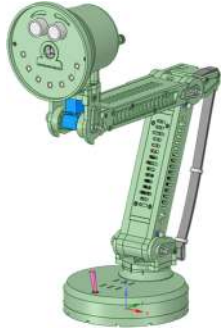
Forearm Side Plate Rht 00.stl



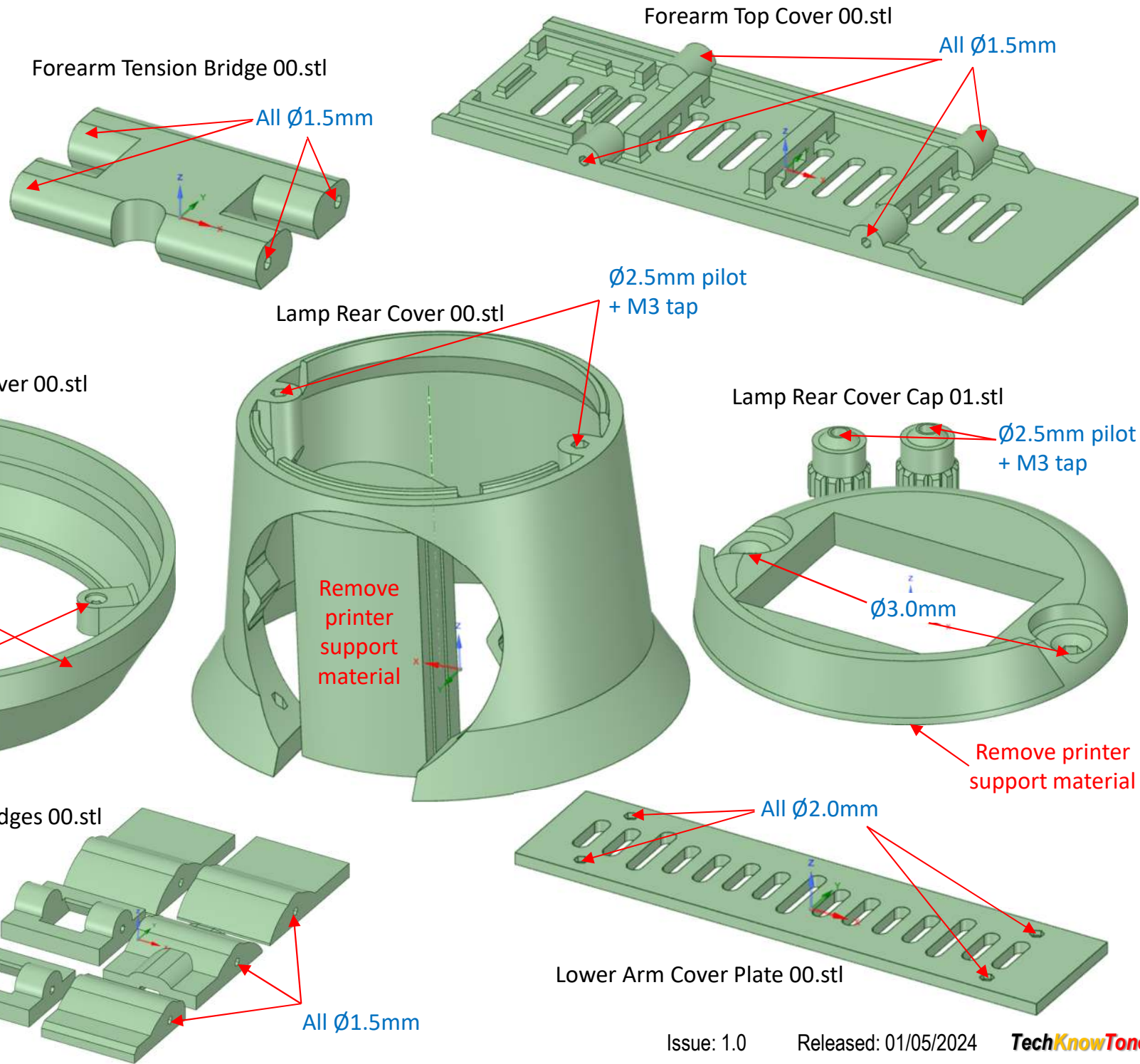
Images are not to scale



# Printed Parts

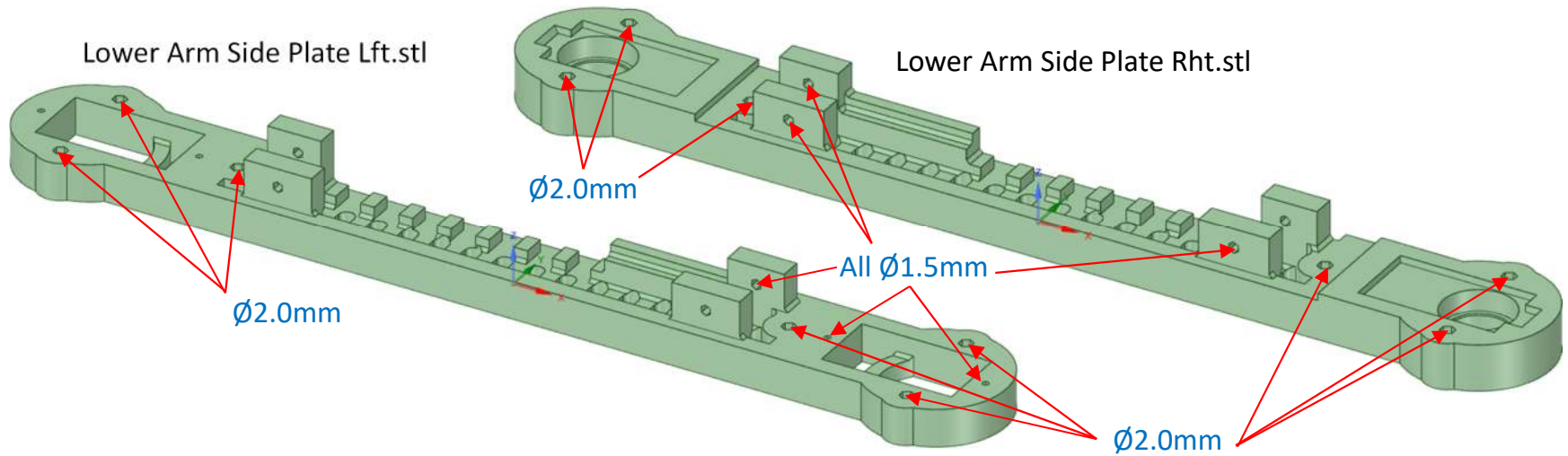
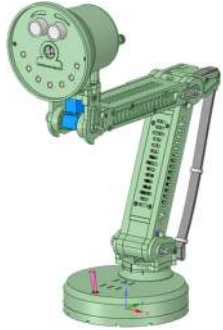


This should help you identify all of the pilot drill and clearance hole sizes.

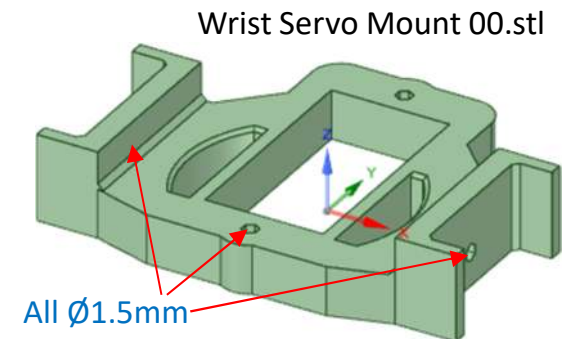
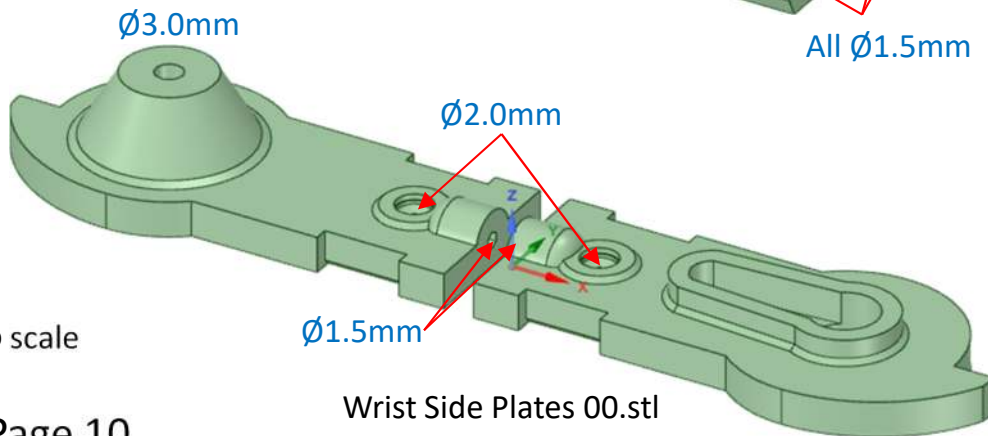
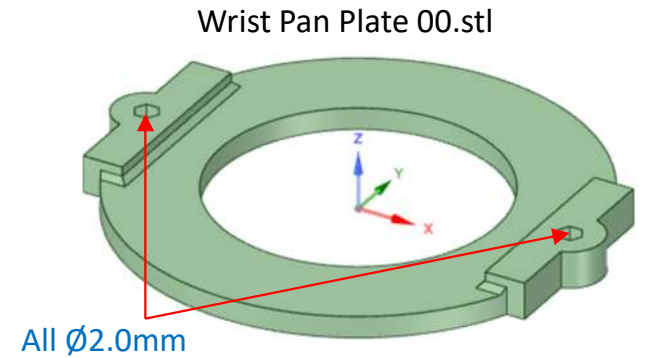
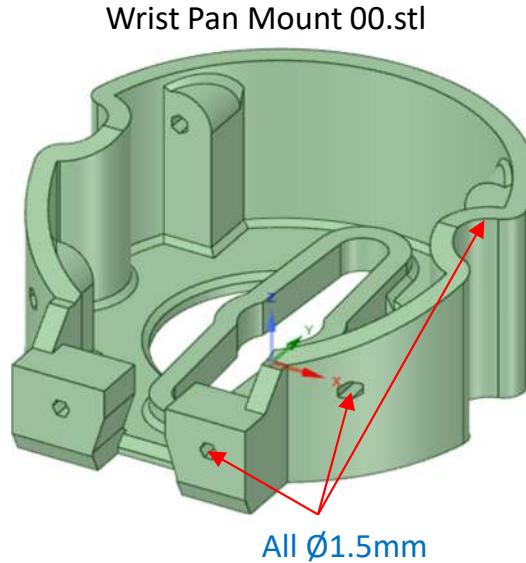
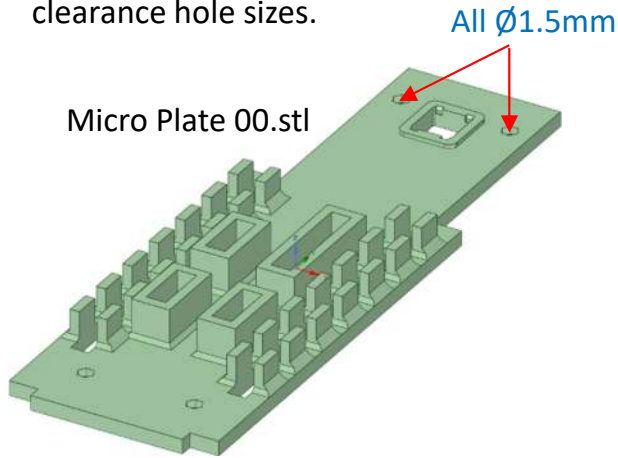


Images are not to scale

# Printed Parts

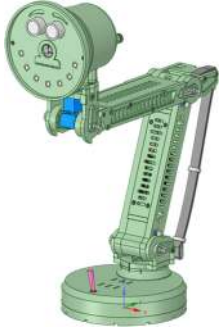


This should help you identify all of the pilot drill and clearance hole sizes.



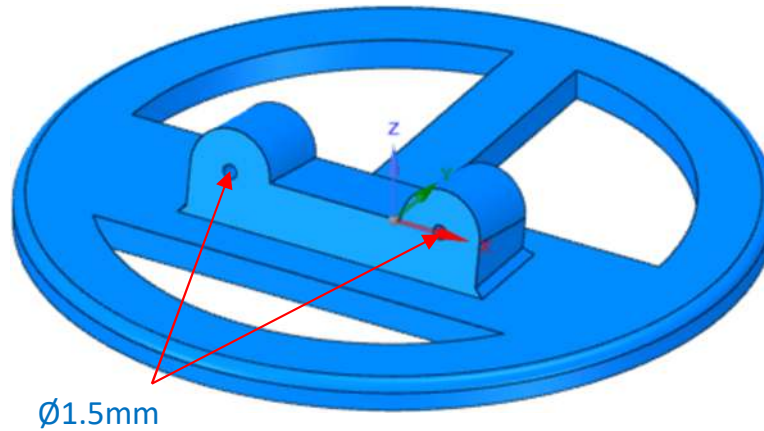
Images are not to scale

# Printed Parts



This should help you identify all of the pilot drill and clearance hole sizes.

Z – Husky Stand.stl



This simple stand is useful for supporting the HuskyLens camera, for evaluation purposes.

Images are not to scale