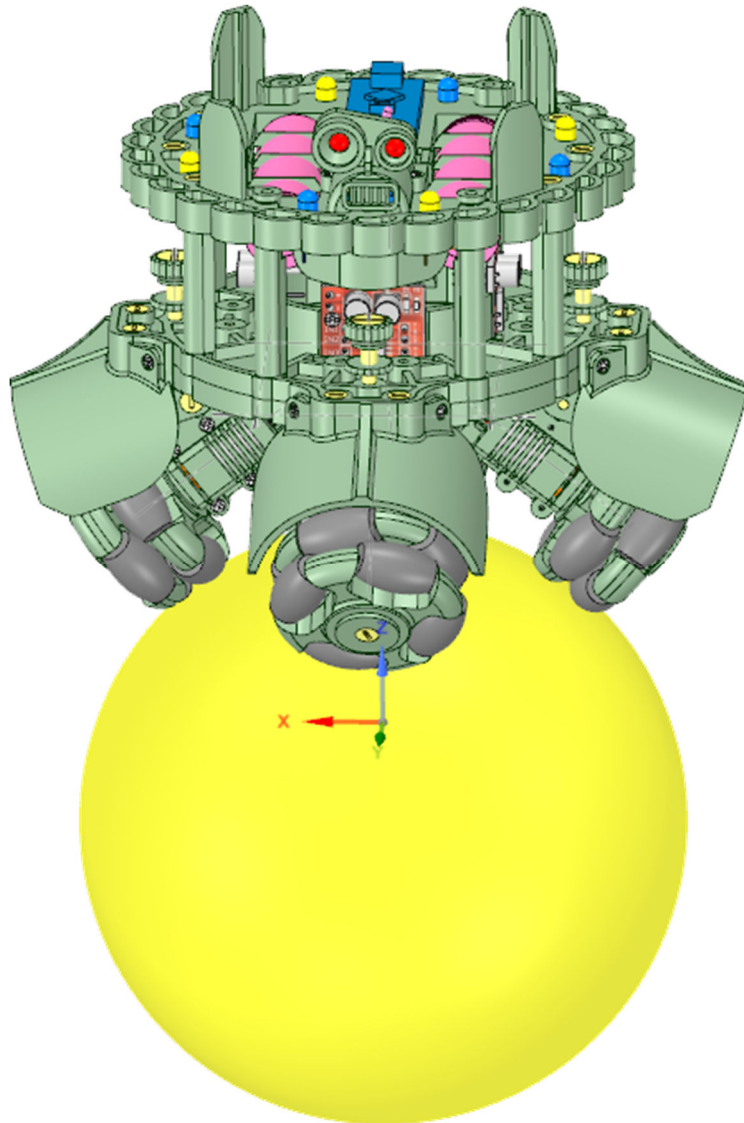
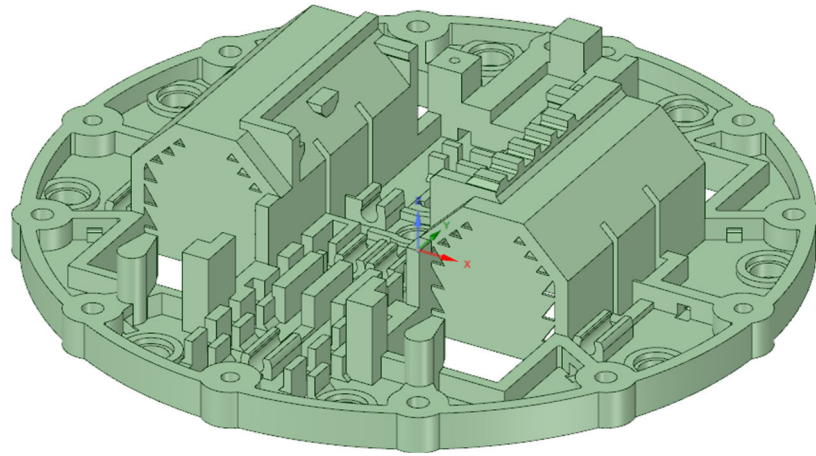
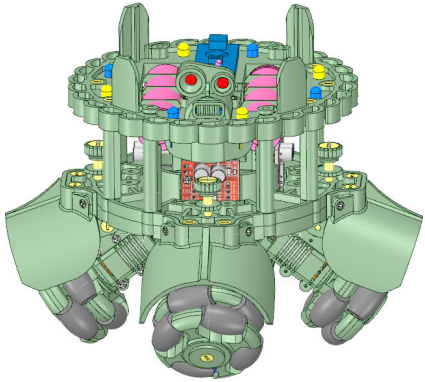


# 4x4 Ball Balancing Robot

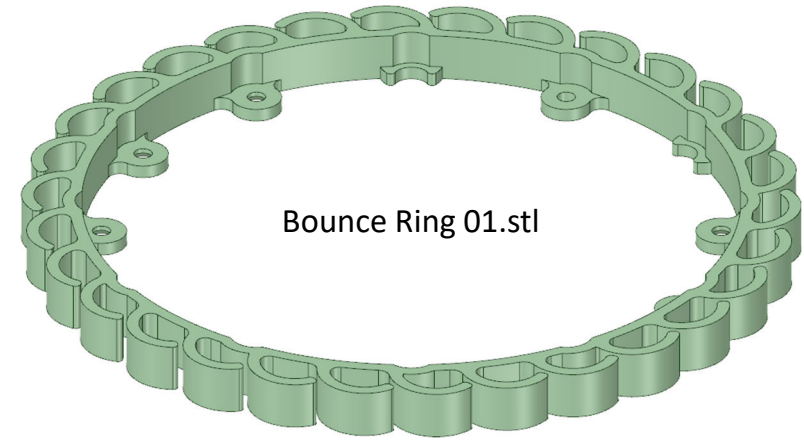
## 3-D Parts



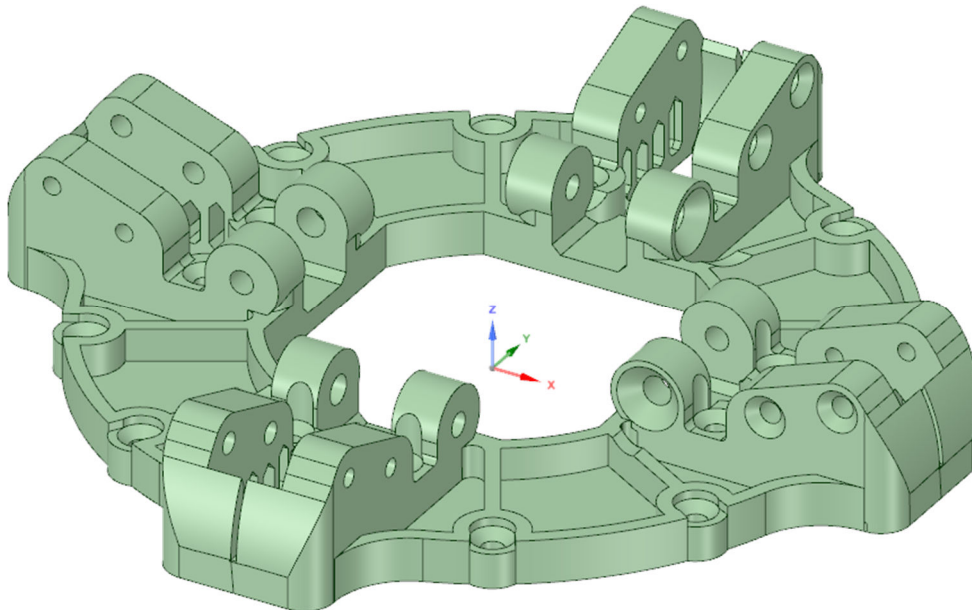
# Printed Parts



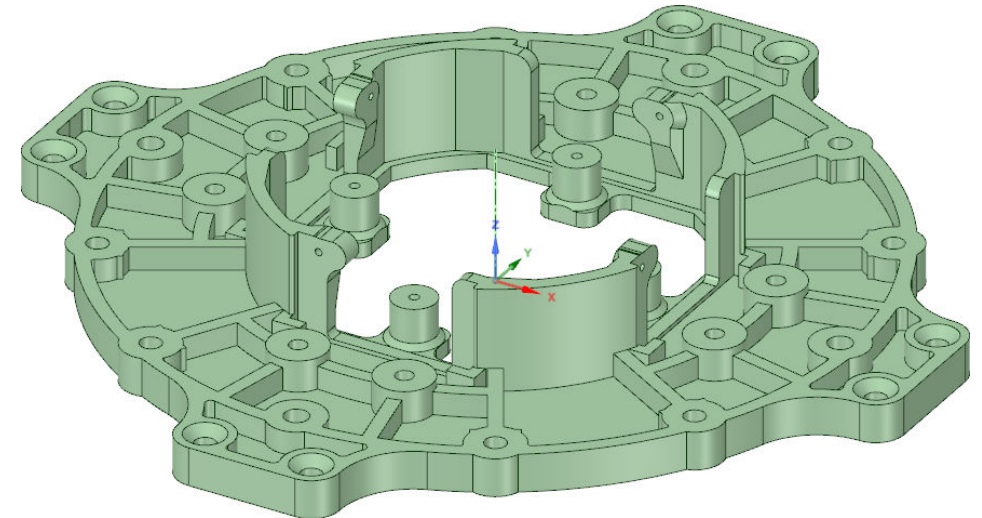
Top Plate 00.stl



This should help you identify all of the parts needed to build this robot.



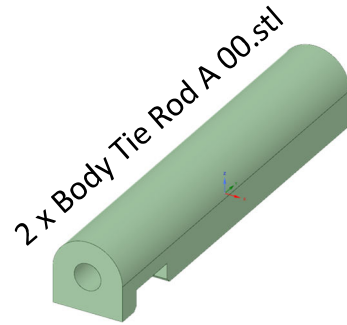
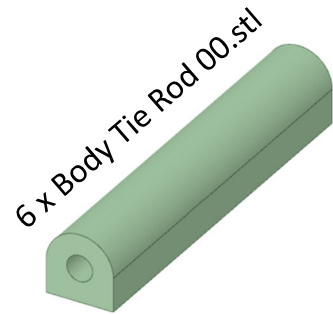
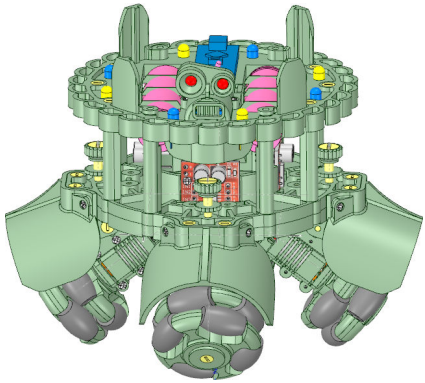
Shoulder Plate 00.stl



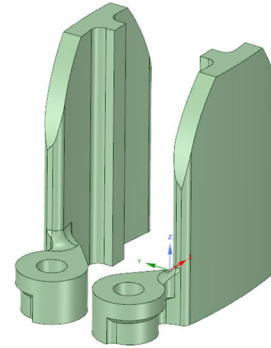
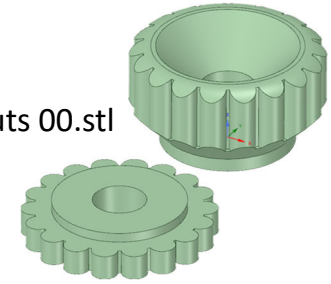
Base Plate 00.stl



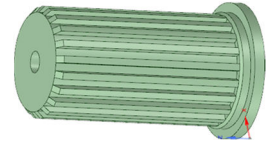
# Printed Parts



4 x M4 Adjuster Nuts 00.stl



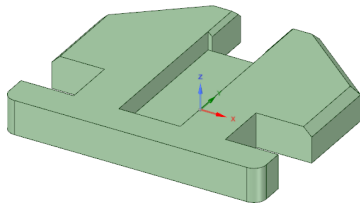
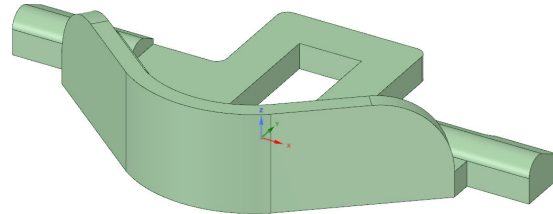
2 x Top Standoff 00.stl



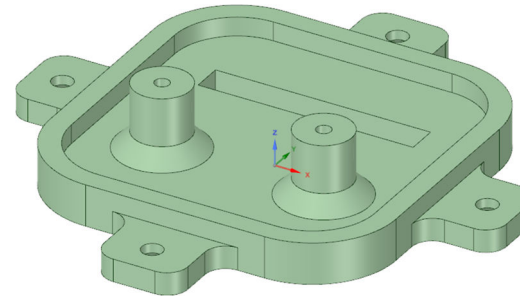
4 x Omni Wheel Shaft 01.stl

Items are not of the same scale.

Battery Clip 00.stl



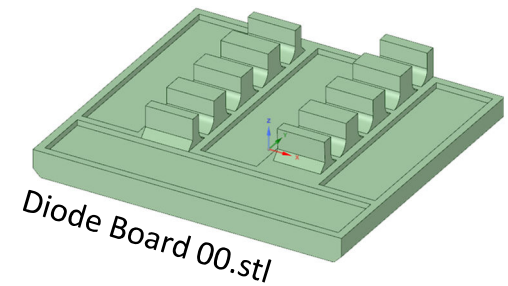
Battery Clip Cover 00.stl



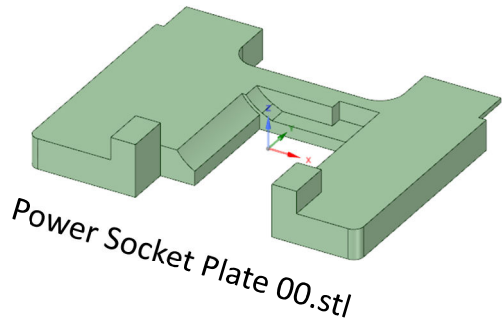
Gyro Plate 00.stl



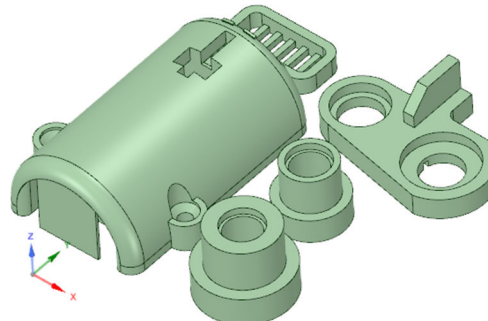
4 x Omni Wheel Shaft End 01.stl



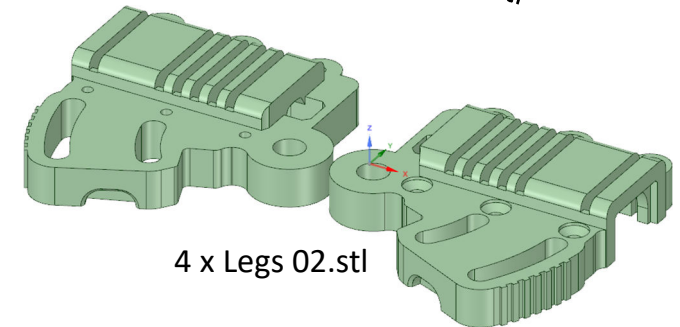
Diode Board 00.stl



Power Socket Plate 00.stl

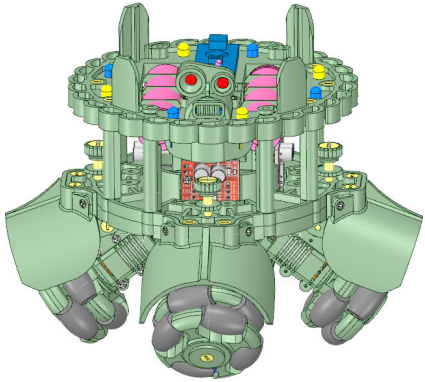


Head 00.stl

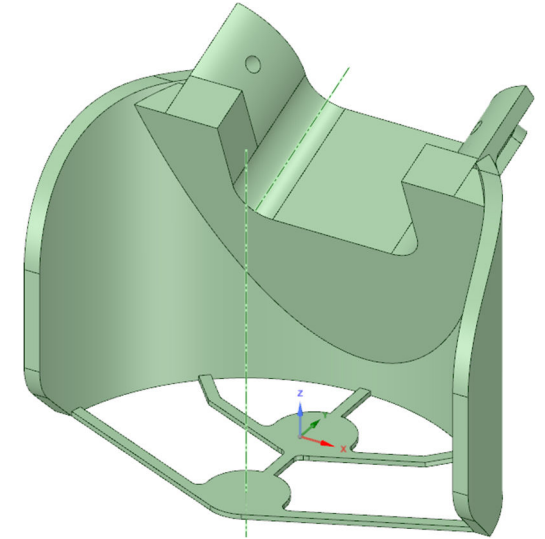
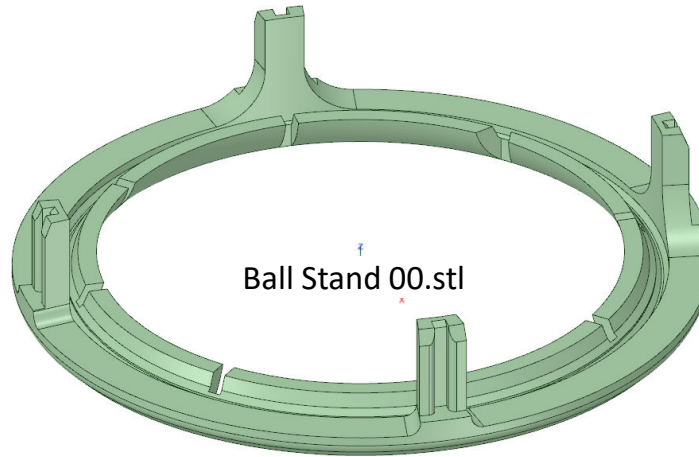


4 x Legs 02.stl

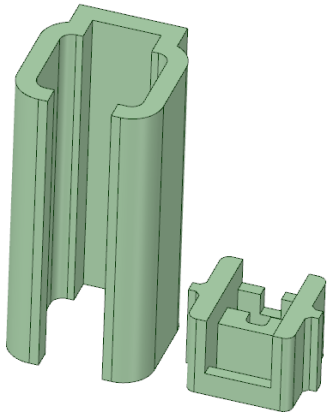
# Printed Parts - Accessories



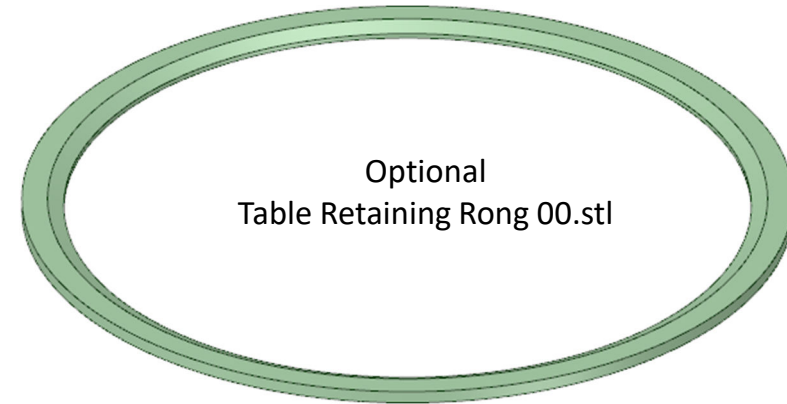
Items are not of the same scale.



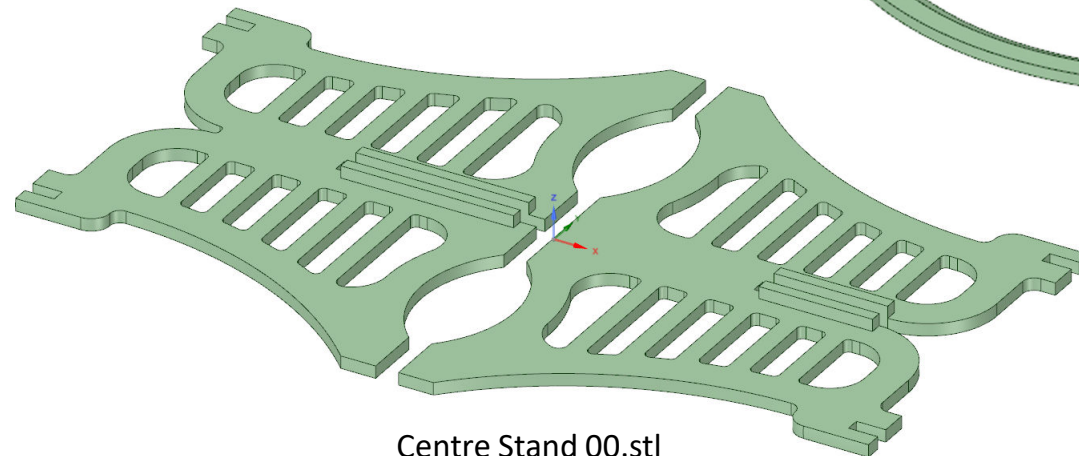
4 x Wheel Shroud 00.stl



Motor Press 01.stl



Optional  
Table Retaining Rong 00.stl

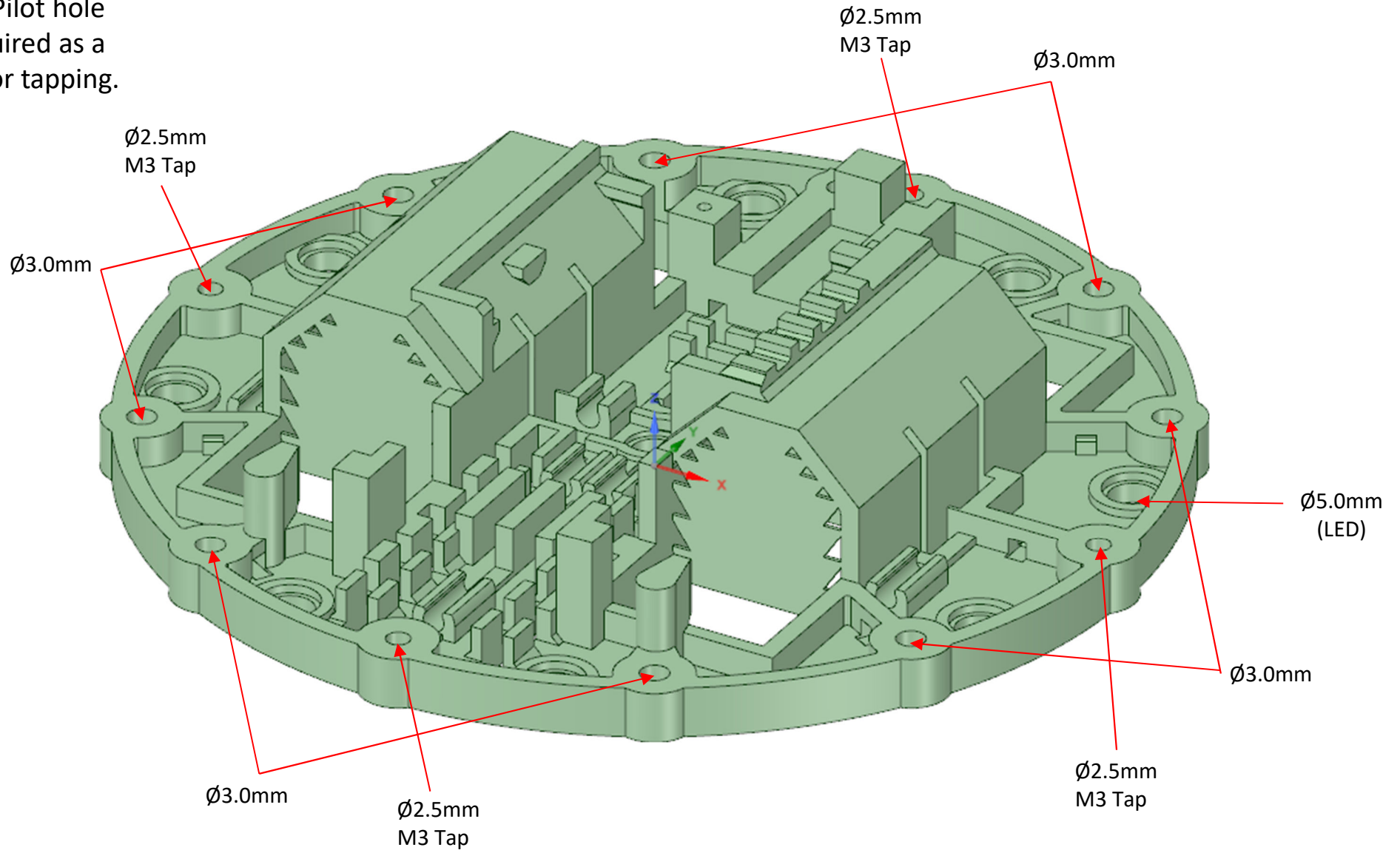


Centre Stand 00.stl

Note – for Wii Nunchuk wireless controller see Quadrupe Auto project.

# Drill & Tap Sizes Top Plate 01.stl

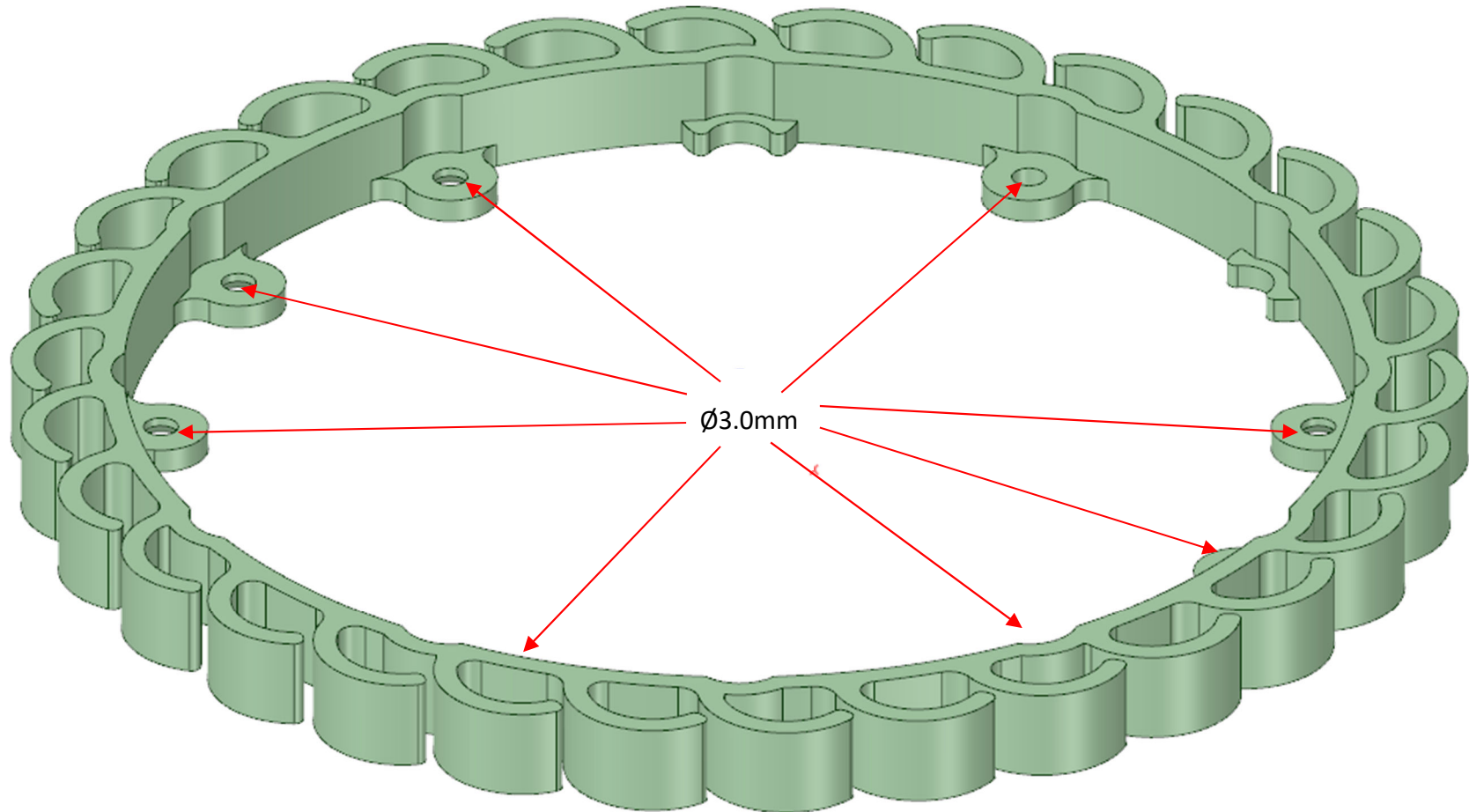
Holes may not print to correct size. Pilot hole sizes are required as a foundation for tapping.



# Drill & Tap Sizes

Bounce Ring 01.stl

Holes may not print to correct size. Pilot hole sizes are required as a foundation for tapping.

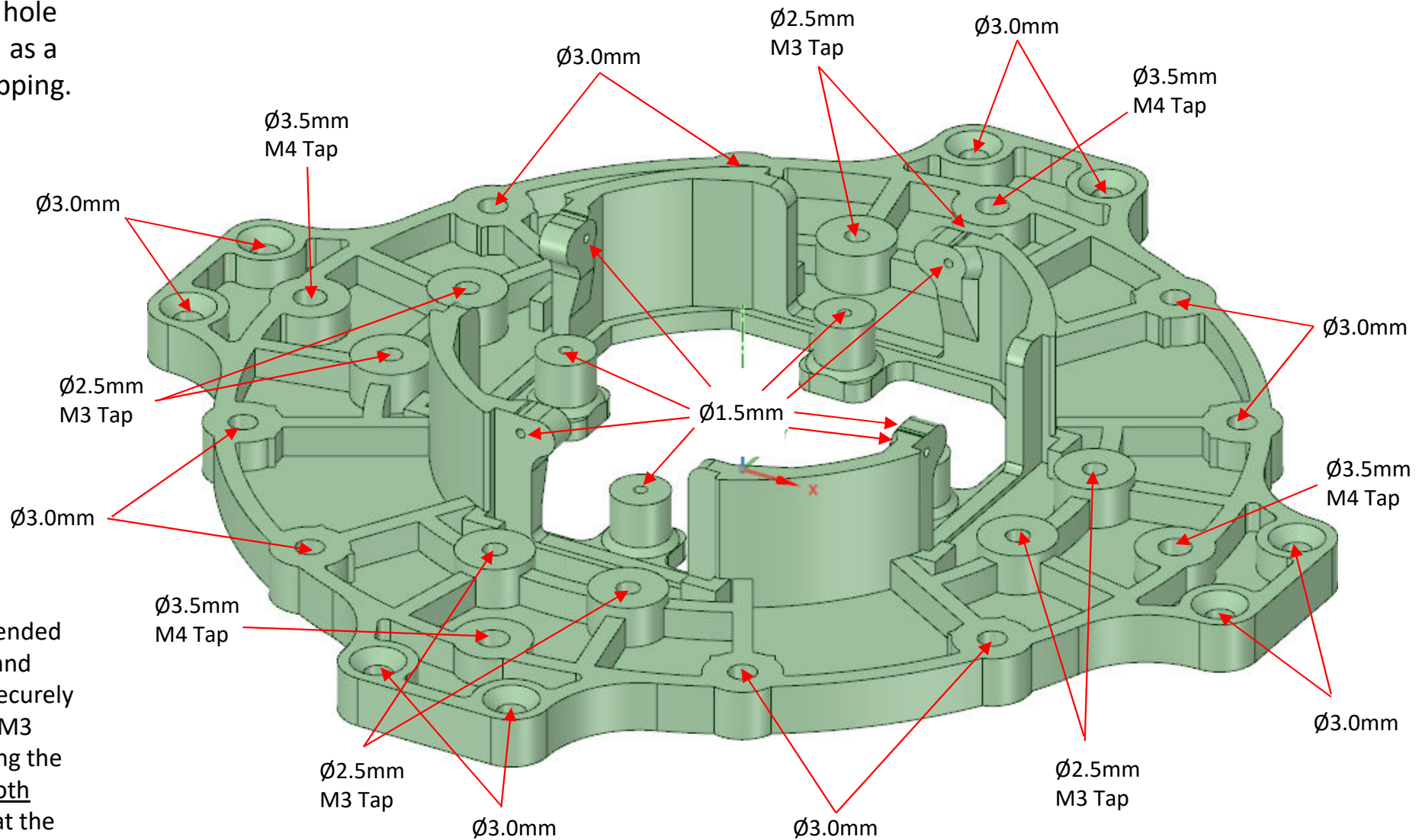




# Drill & Tap Sizes

Base Plate 00.stl

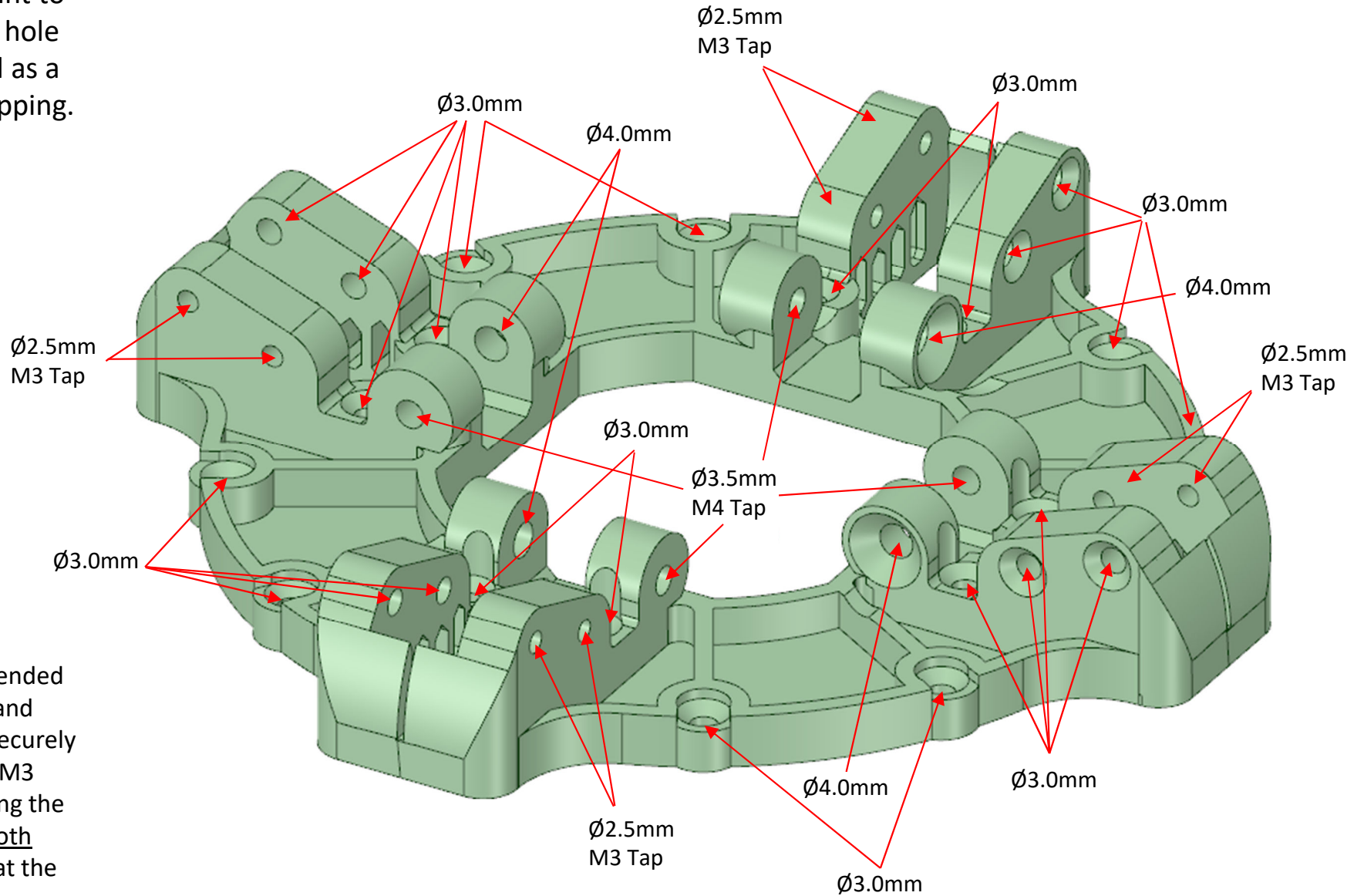
Holes may not print to correct size. Pilot hole sizes are required as a foundation for tapping.



Note – it is recommended that the Base Plate and Shoulder Plate are securely connected with the M3 screws **before** tapping the M4 holes through **both** plates. To ensure that the threads align.

# Drill & Tap Sizes Shoulder Plate 00.stl

Holes may not print to correct size. Pilot hole sizes are required as a foundation for tapping.



Note – it is recommended that the Base Plate and Shoulder Plate are securely connected with the M3 screws **before** tapping the M4 holes through **both** plates. To ensure that the threads align.



# Drill & Tap Sizes

Holes may not print to correct size. Pilot hole sizes are required as a foundation for tapping.

