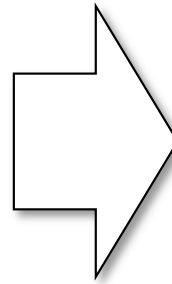
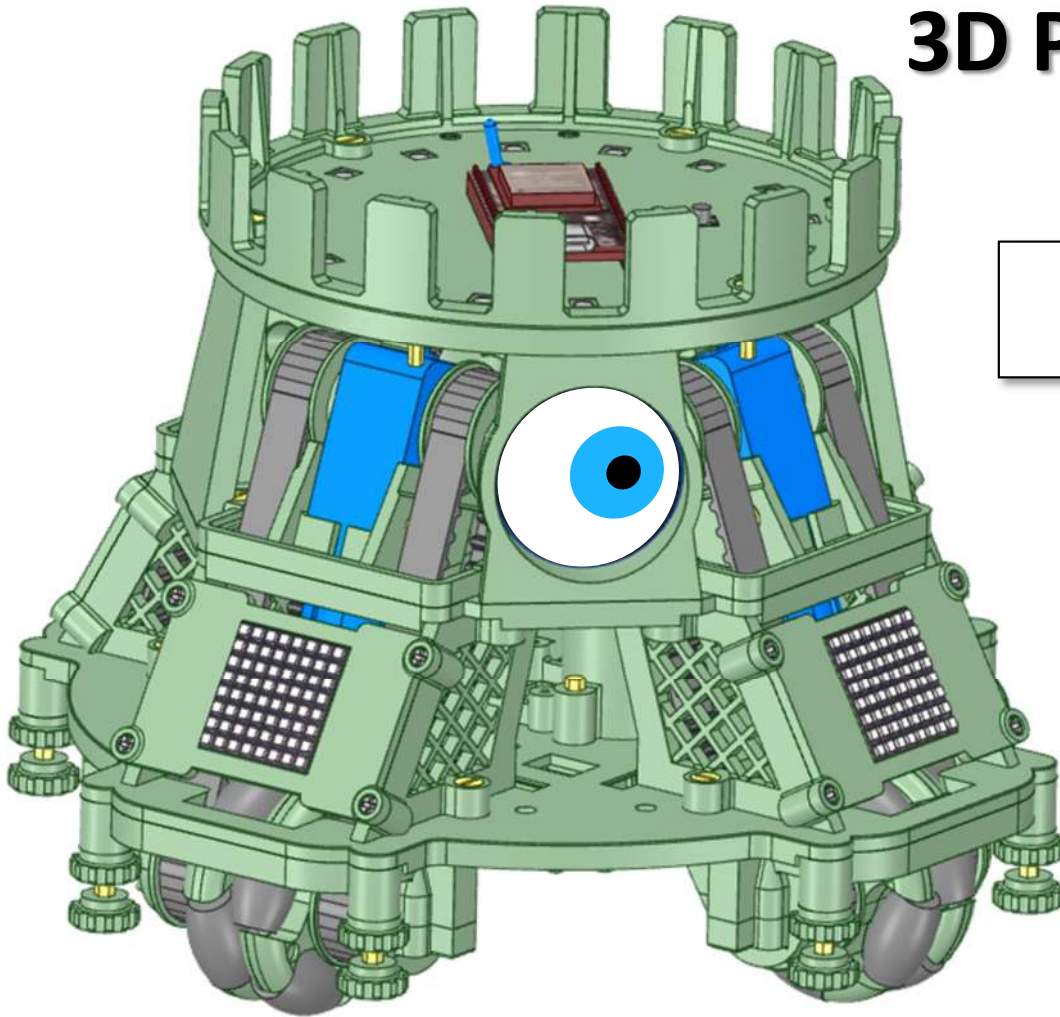


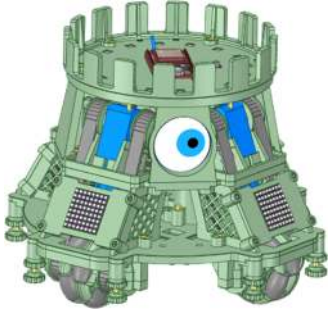
BallBot 4x4 Strider

3D Parts



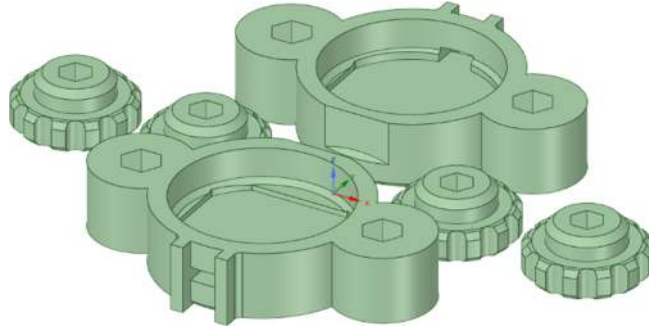
You can download a .zip file containing all of the 3D models for this BallBot.

Printed Parts

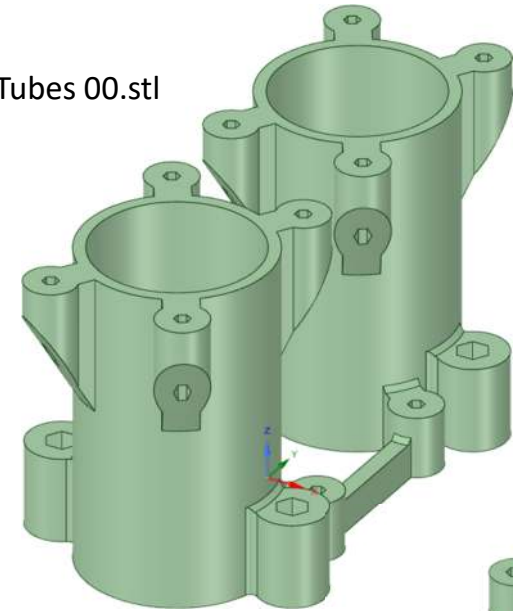


This should help you identify all of the parts needed to build the robot.

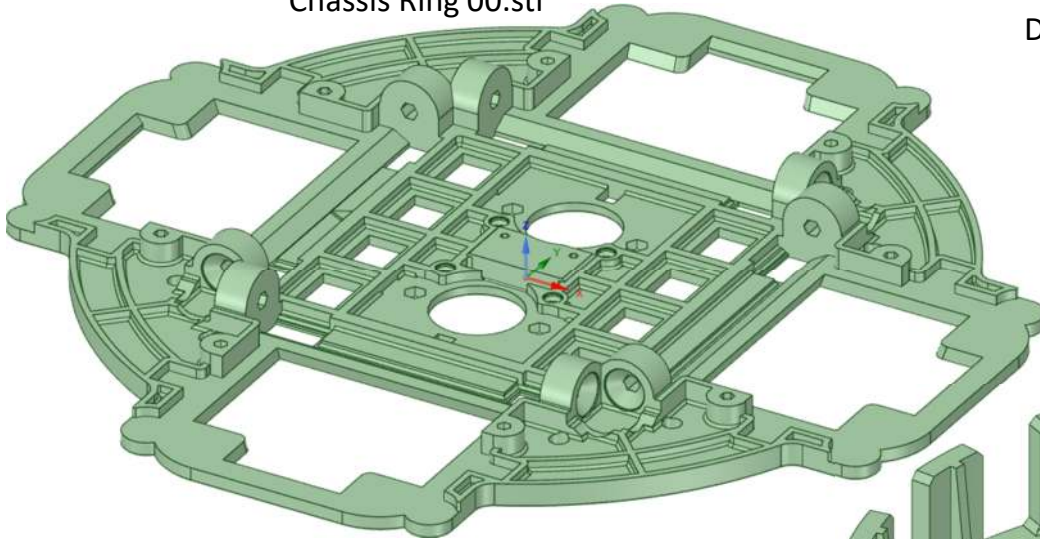
Battery Caps 00.stl



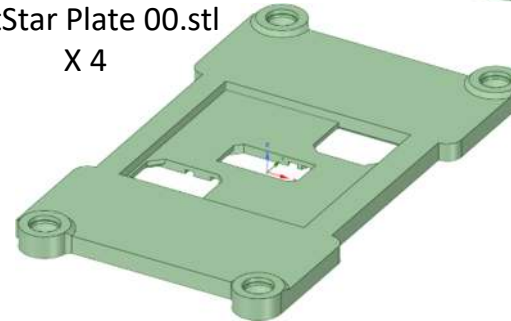
Battery Tubes 00.stl



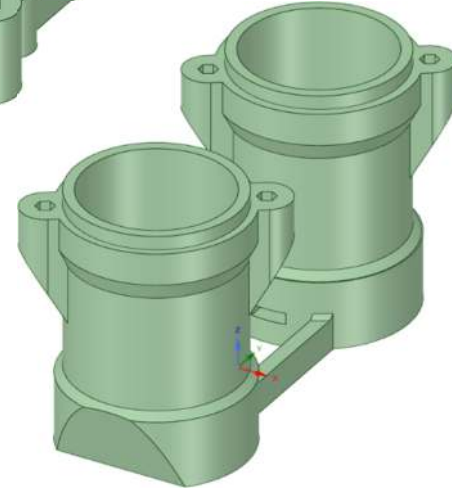
Chassis Ring 00.stl



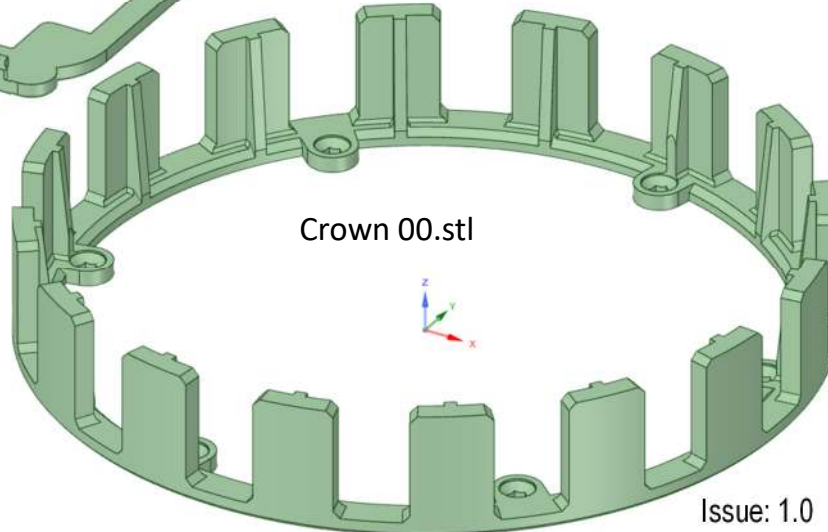
DotStar Plate 00.stl
X 4



Battery Tubes Top 00.stl

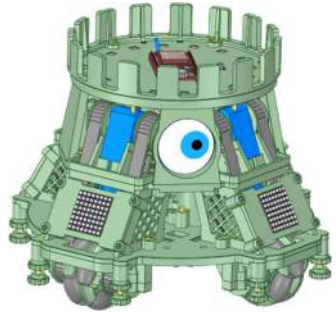


Crown 00.stl



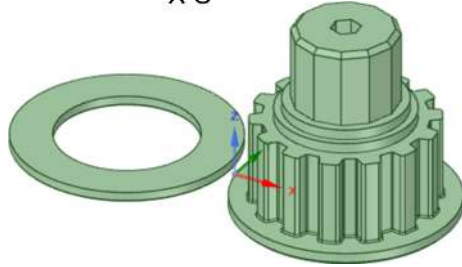
Images are not to scale

Printed Parts

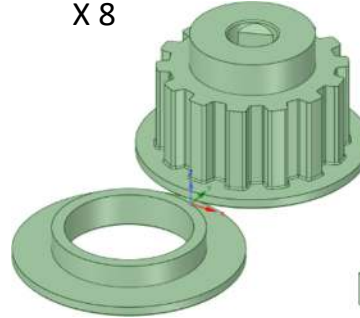


This should help you identify all of the parts needed to build the robot.

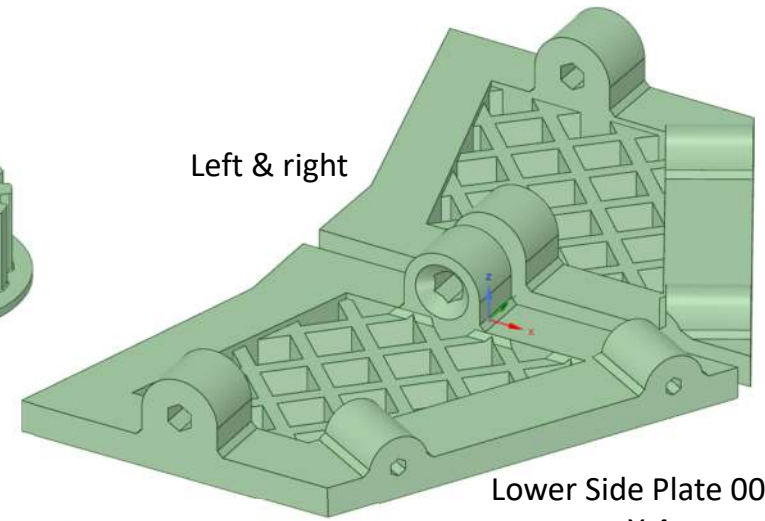
Omni Drive Sprocket 00.stl
X 8



Motor Drive Sprocket 00.stl
X 8

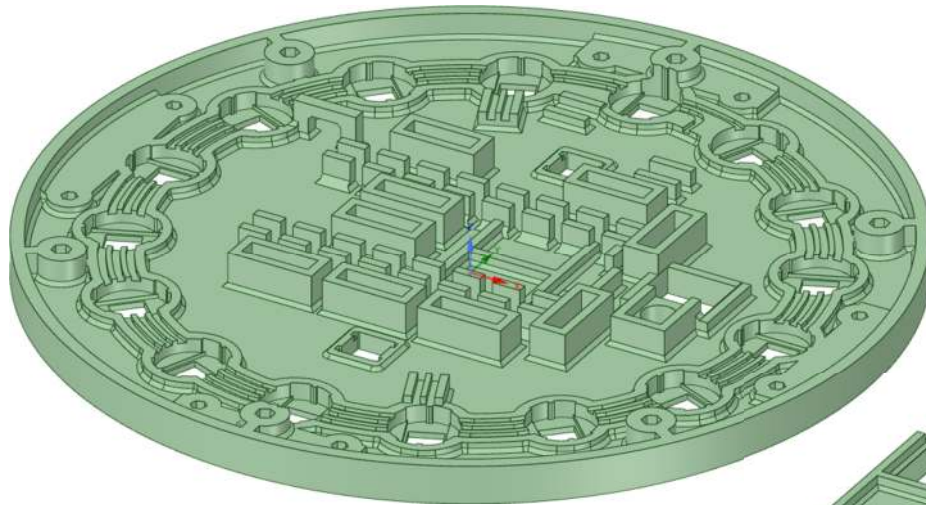


Left & right

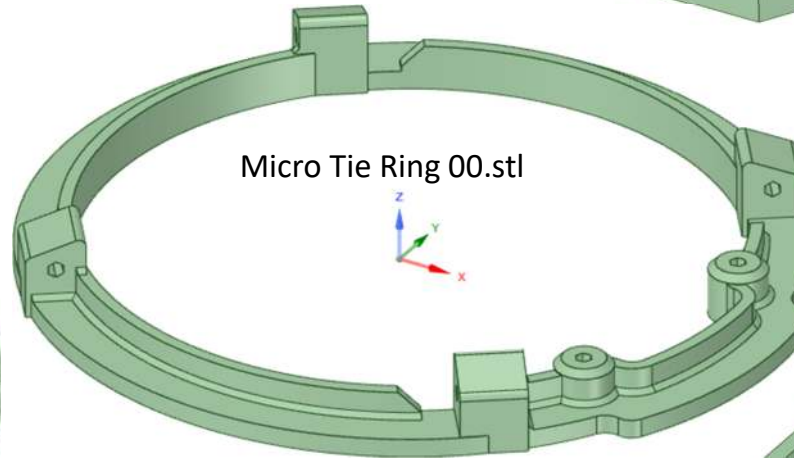


Lower Side Plate 00.stl
X 4

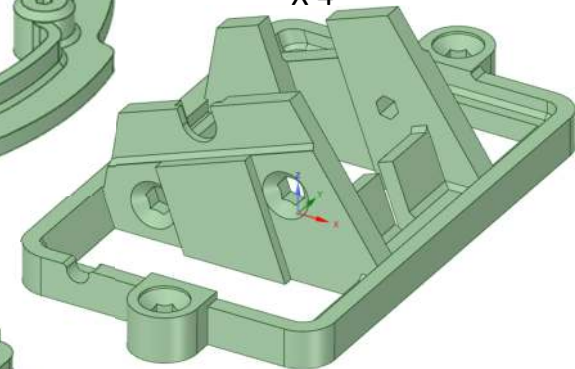
Micro Plate 00.stl



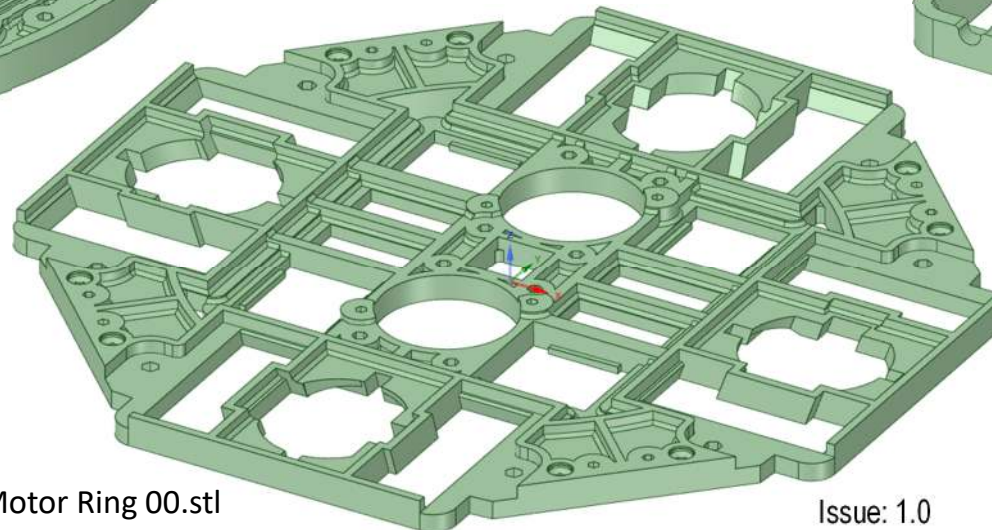
Micro Tie Ring 00.stl



Motor Mount 00.stl
X 4

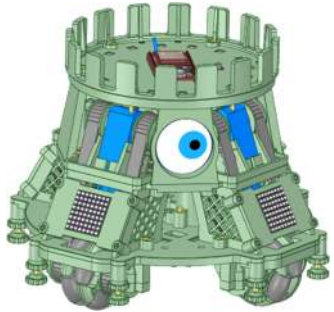


Motor Ring 00.stl



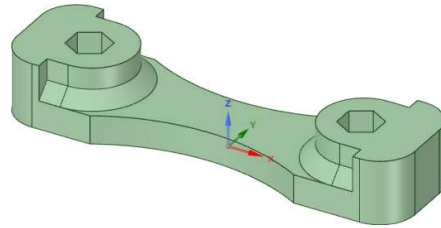
Images are not to scale

Printed Parts

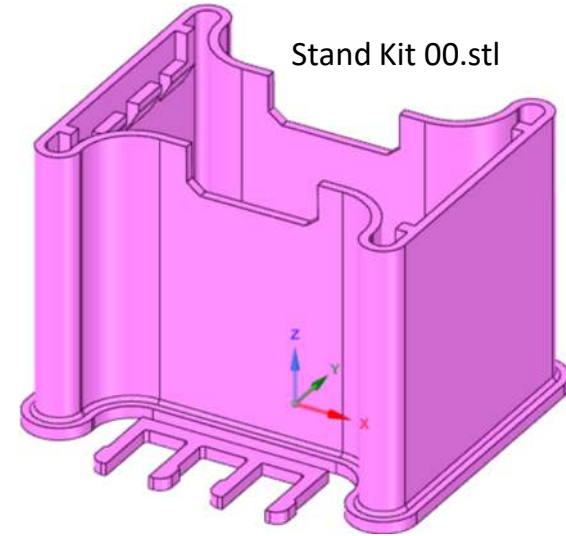


This should help you identify all of the parts needed to build the robot.

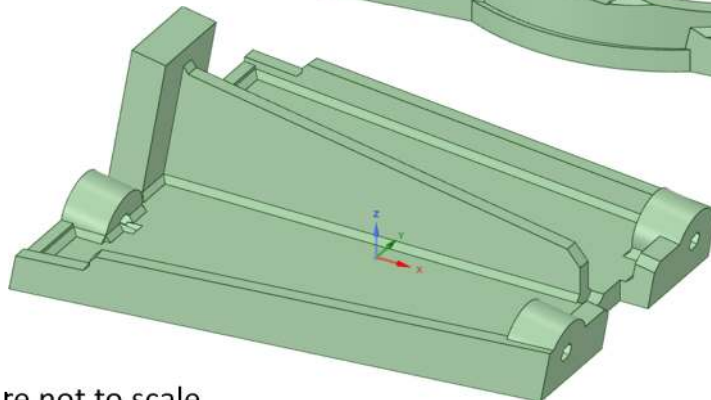
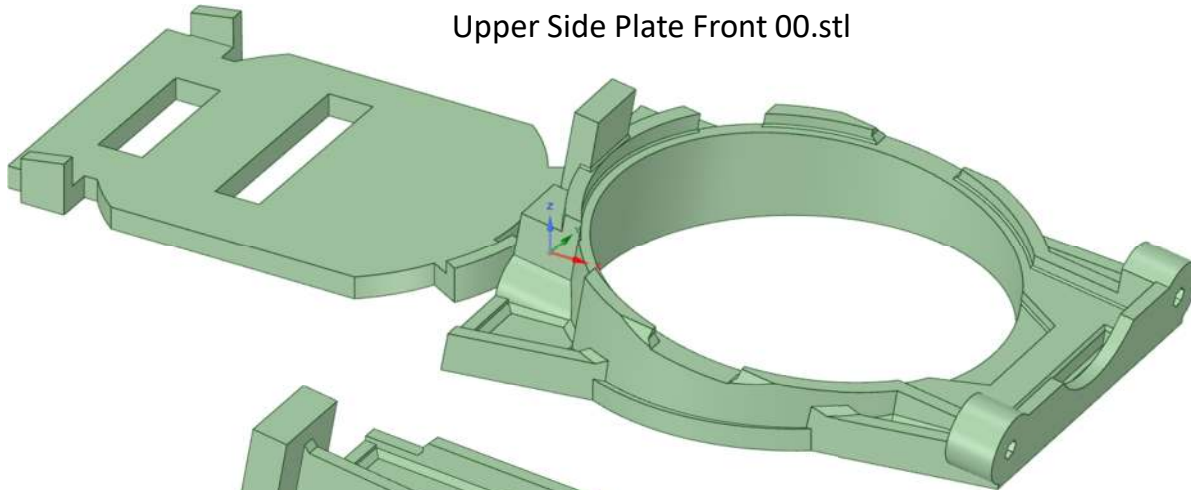
MPU Strap 00.stl



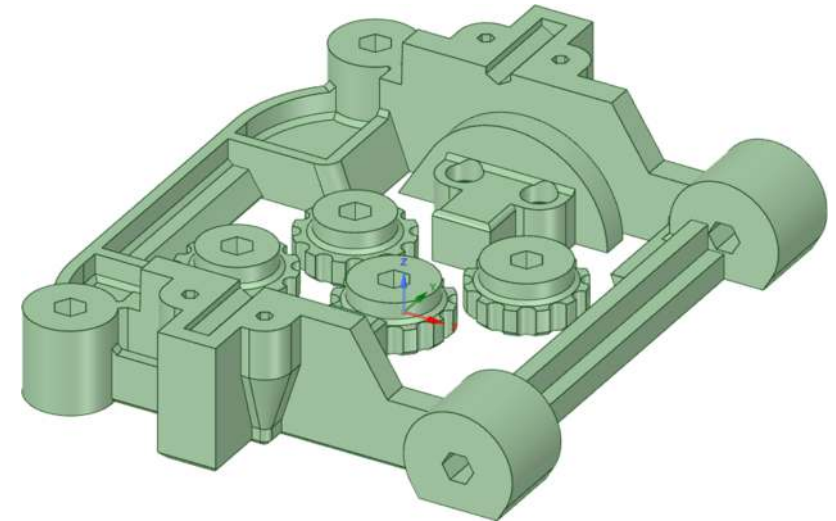
Stand Kit 00.stl



Upper Side Plate Front 00.stl



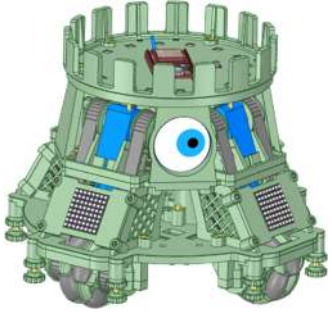
Upper Side Plate Side 00.stl
X 3



Wheel Mount Kit 00.stl
X 4

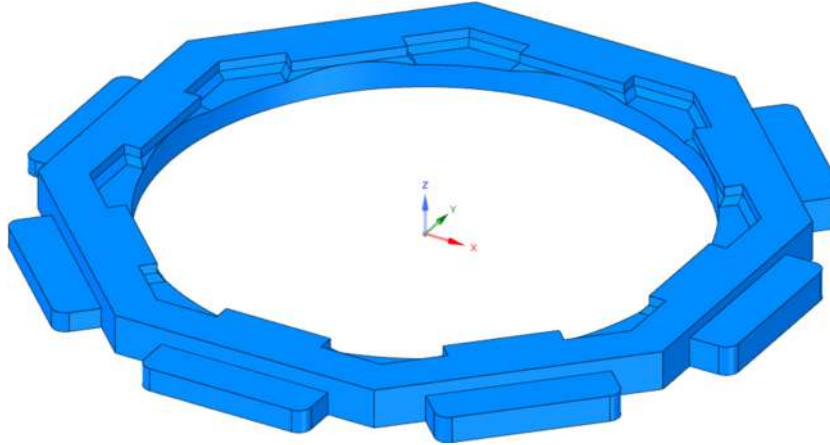
Images are not to scale

Printed Parts

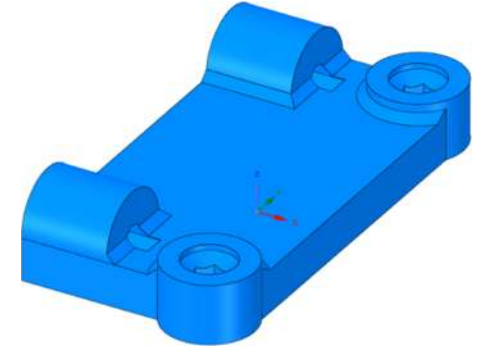


This should help you identify all of the parts needed to build the robot.

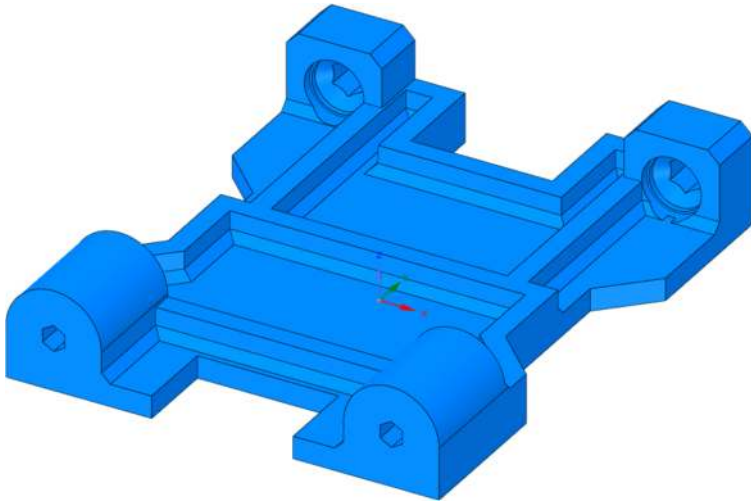
Z – Gap Gauge 00.stl



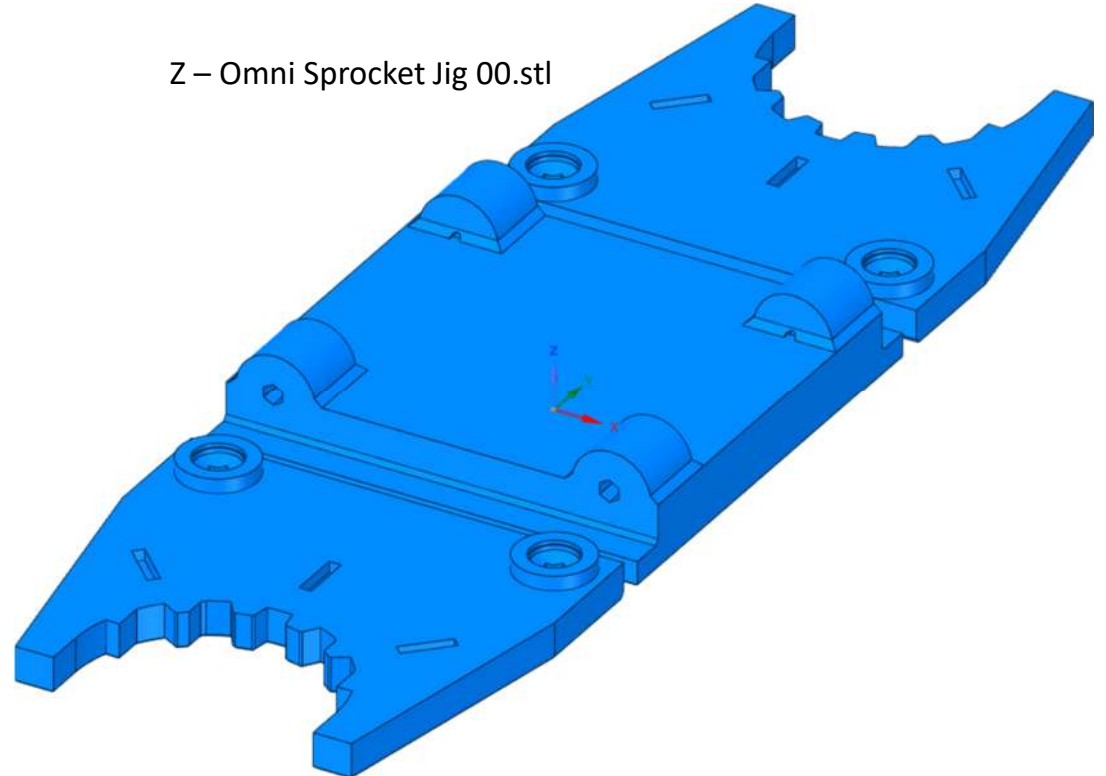
Z – Micro Plate Mount 00.stl



Z – Upstand 00.stl

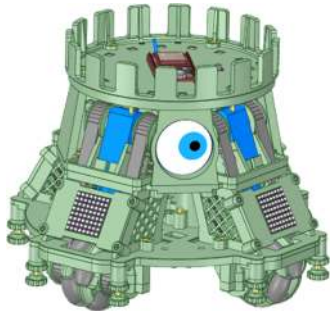


Z – Omni Sprocket Jig 00.stl



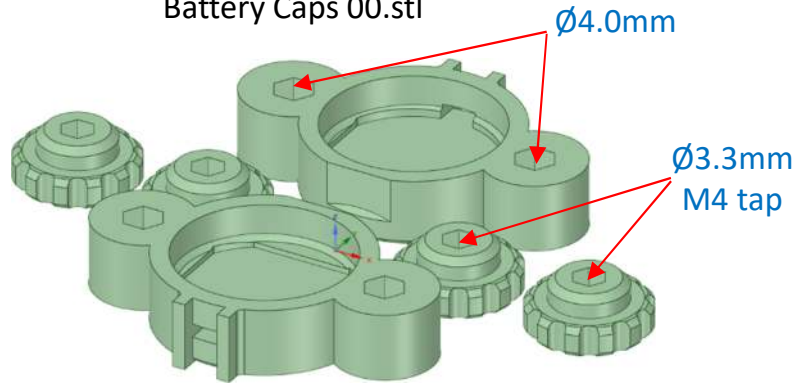
Images are not to scale

Printed Parts

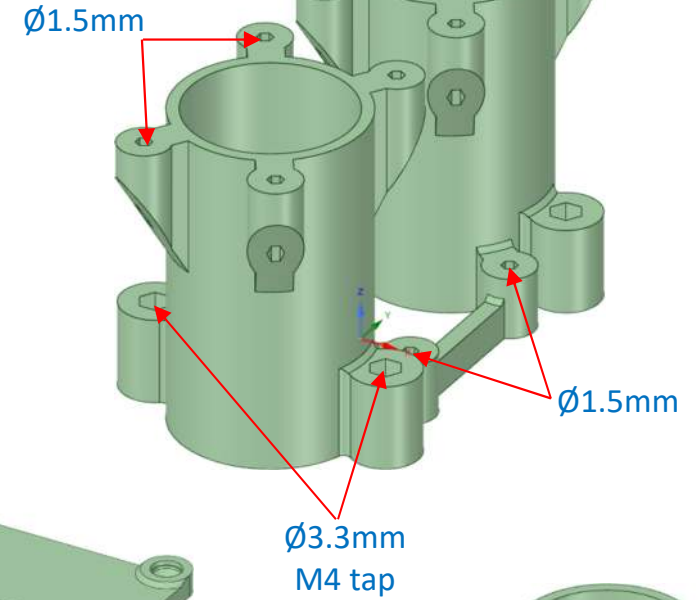


This should help you identify all of the pilot drill and clearance hole sizes.

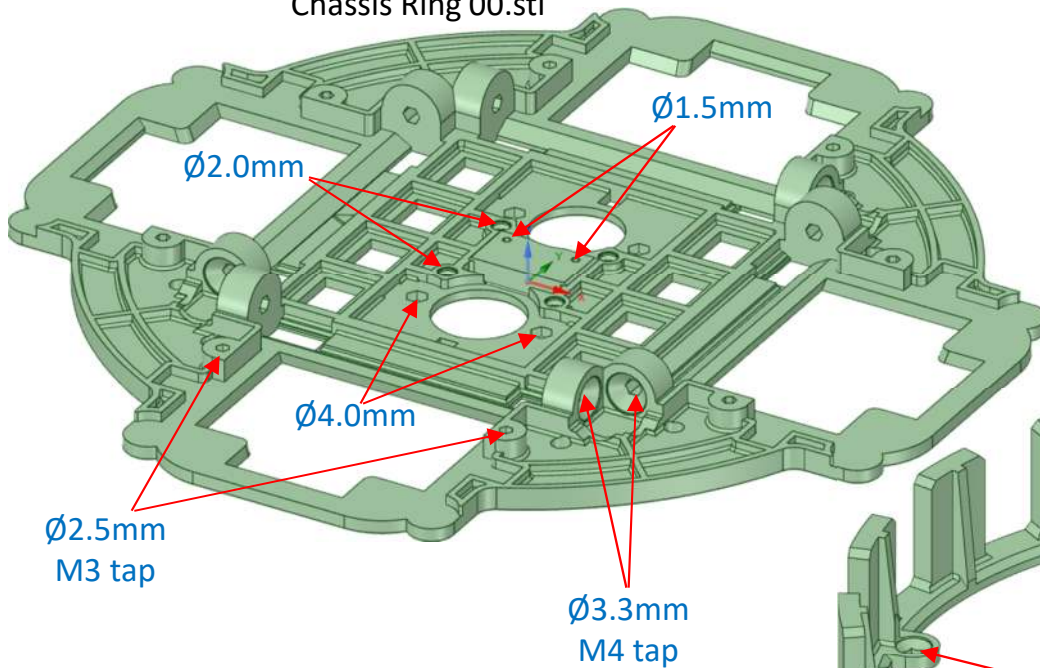
Battery Caps 00.stl



Battery Tubes 00.stl



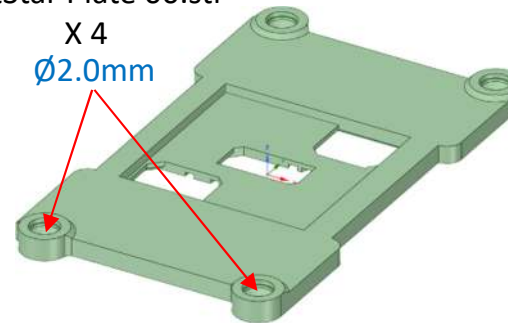
Chassis Ring 00.stl



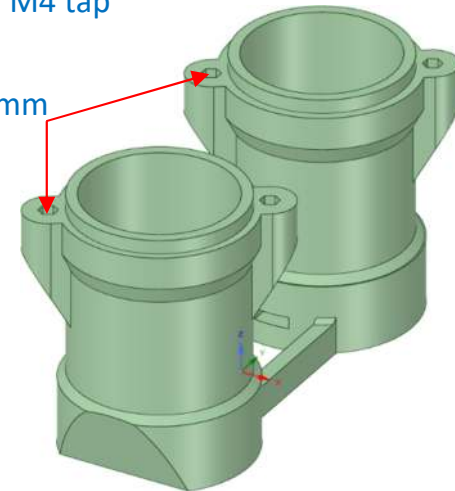
DotStar Plate 00.stl

X 4

Ø2.0mm



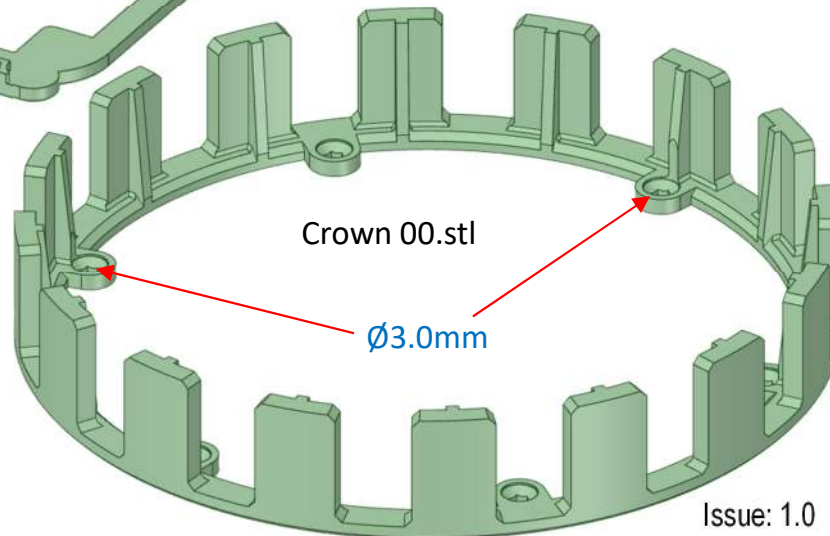
Ø1.5mm



Battery Tubes Top 00.stl

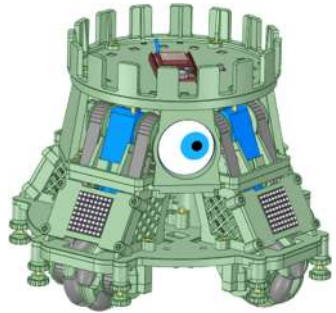
Crown 00.stl

Ø3.0mm



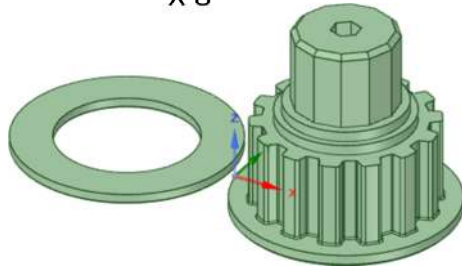
Images are not to scale

Printed Parts

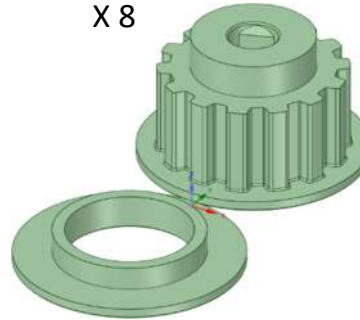


This should help you identify all of the pilot drill and clearance hole sizes.

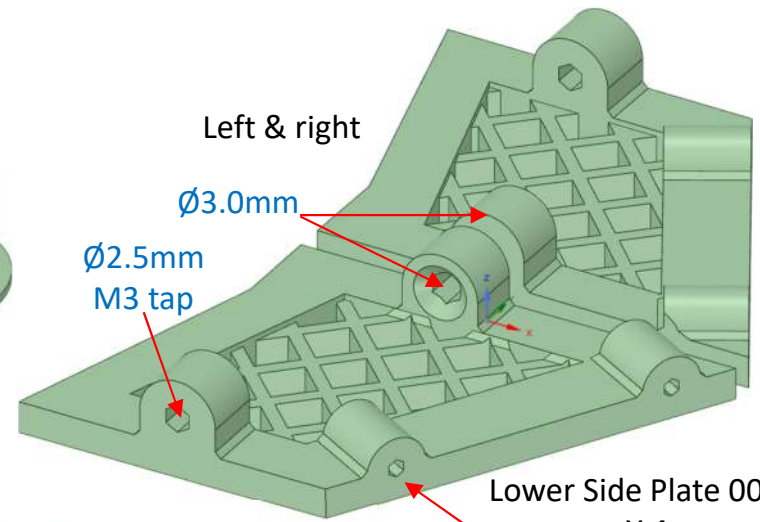
Omni Drive Sprocket 00.stl
X 8



Motor Drive Sprocket 00.stl
X 8



Left & right



Ø3.0mm

Ø2.5mm
M3 tap

Lower Side Plate 00.stl
X 4

Ø1.5mm

Micro Plate 00.stl

Ø1.5mm

Ø2.5mm
M3 tap

Micro Tie Ring 00.stl

Ø1.5mm

Motor Mount 00.stl
X 4

Ø2.5mm
M3 tap

Ø1.5mm

Ø2.5mm
M3 tap

Ø2.0mm

Ø3.0mm

Micro Ring 00.stl

Ø2.0mm

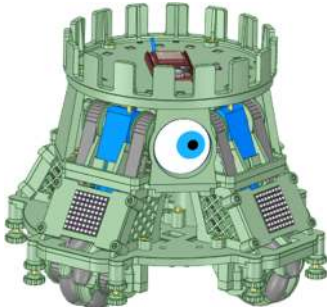
Issue: 1.0

Released: 19/12/2025

TechKnowTone

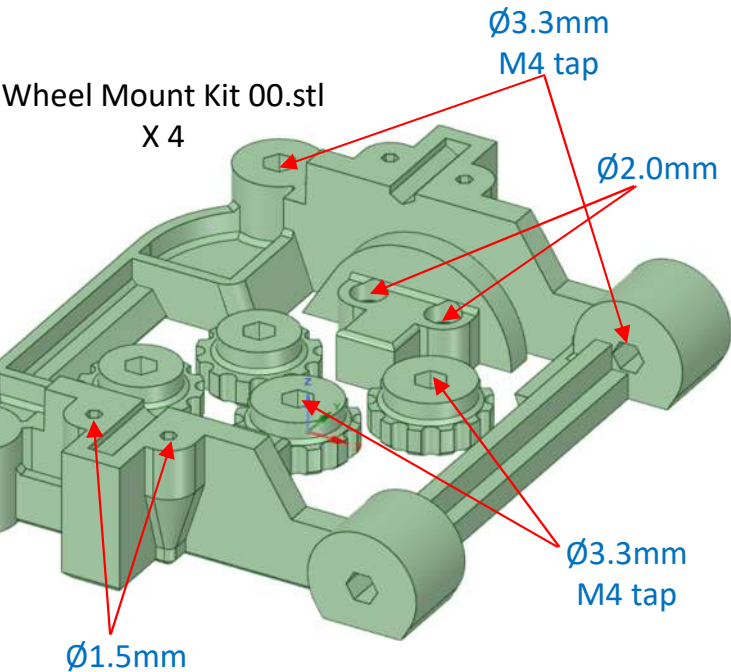
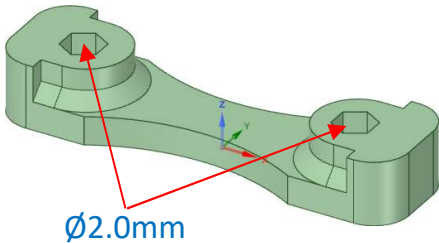
Images are not to scale

Printed Parts

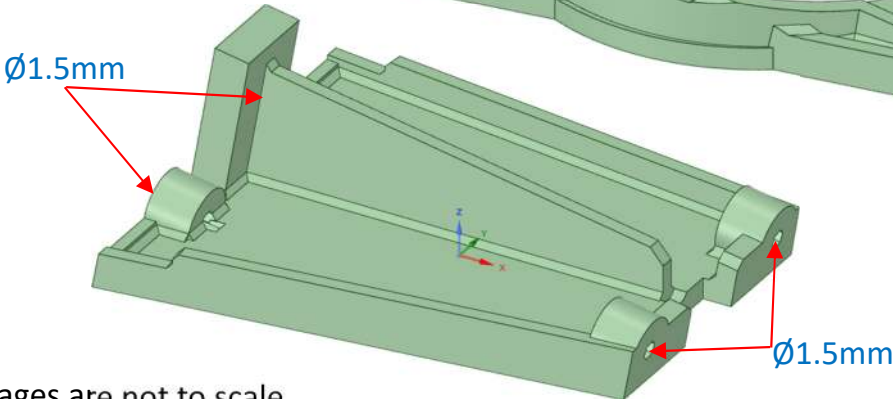
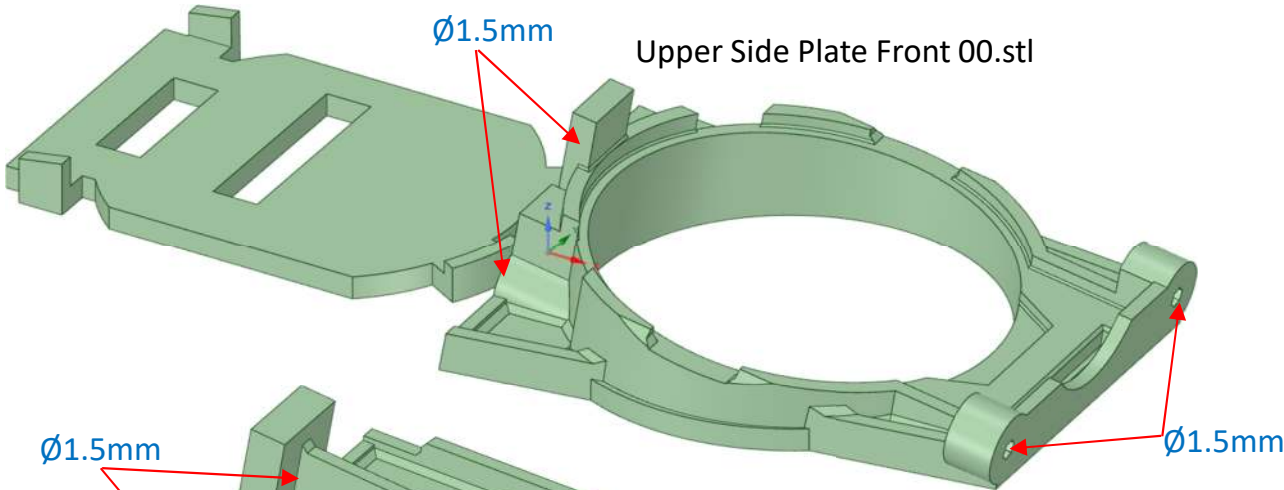


This should help you identify all of the pilot drill and clearance hole sizes.

MPU Strap 00.stl



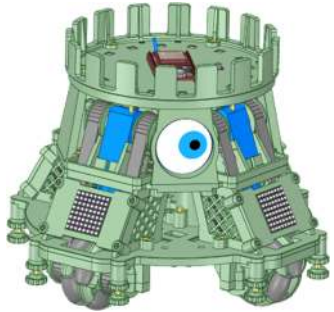
Upper Side Plate Front 00.stl



Upper Side Plate Side 00.stl
X 3

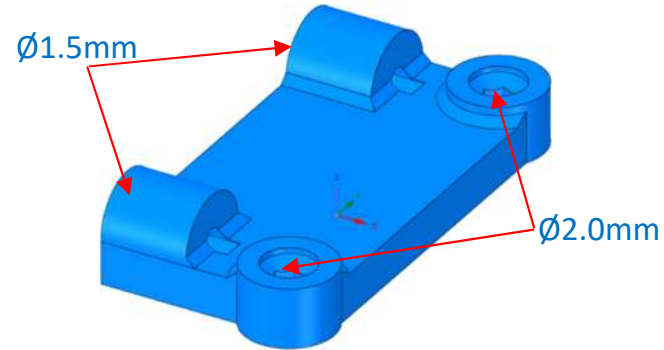
Images are not to scale

Printed Parts

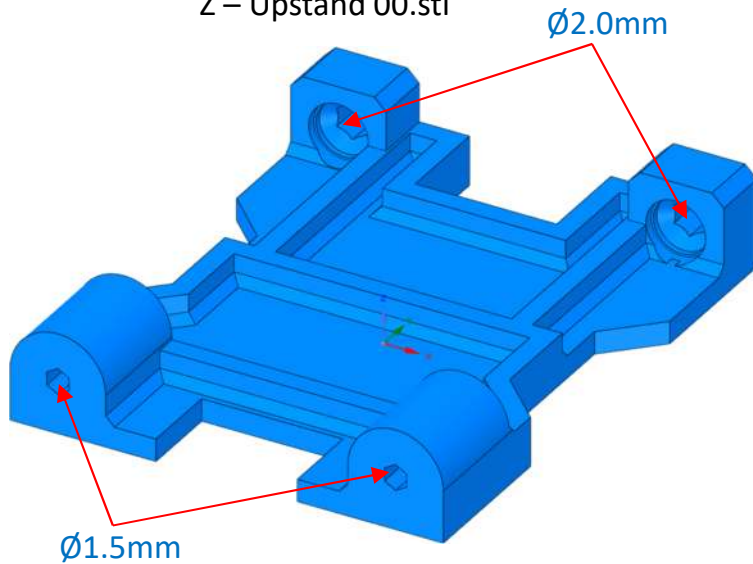


This should help you identify all of the pilot drill and clearance hole sizes.

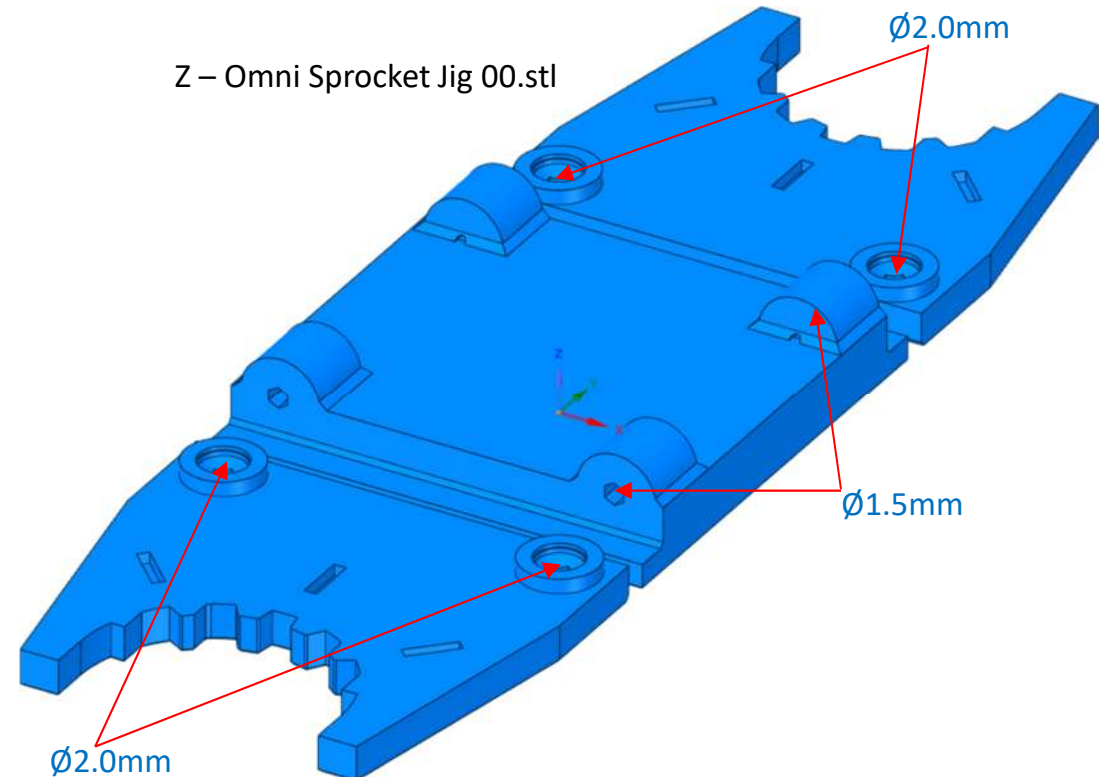
Z – Micro Plate Mount 00.stl



Z – Upstand 00.stl



Z – Omni Sprocket Jig 00.stl



Images are not to scale