

# Traffic Lights

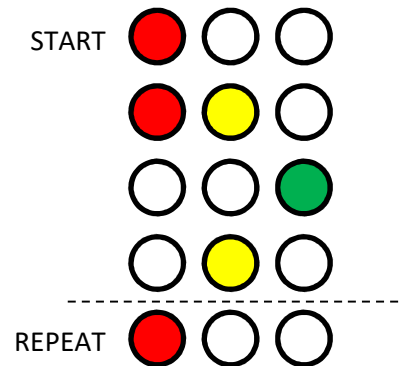
## Code Club Challenge – 01-01E

### Setup:

- Building on the tutorial at <https://www.arduino.cc/en/Tutorial/Blink>
- Connect three coloured LEDs to the UNO using digital pins 11, 12 and 13 (G,A,R)
- Each LED must have a 220 ohm series current limiting resistor

### Code Challenges:

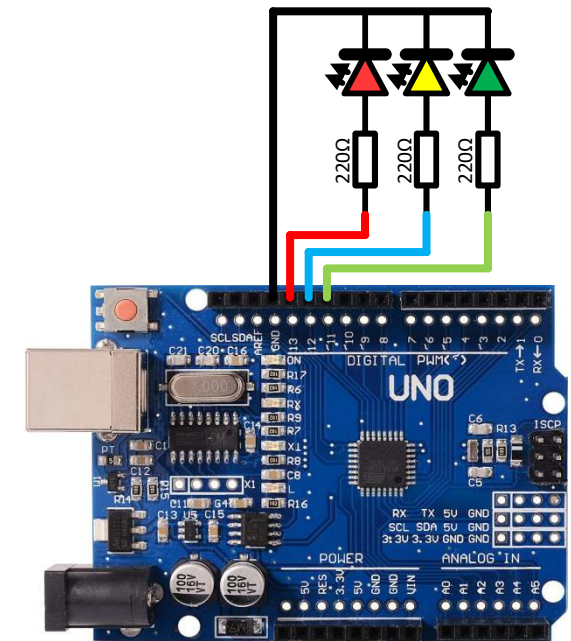
- Write traffic light sequence code, changing at 1 second intervals, then repeating
- Show your understanding of the code by explaining it to your teacher



- Connect additional lights and write code to simulate a traffic junction

### Can you:

- Give examples of real life applications for changing light sequence?
- Think of ways to modify the code to create other functions?



### WARNING!

Always disconnect power before making/changing circuit connections

